

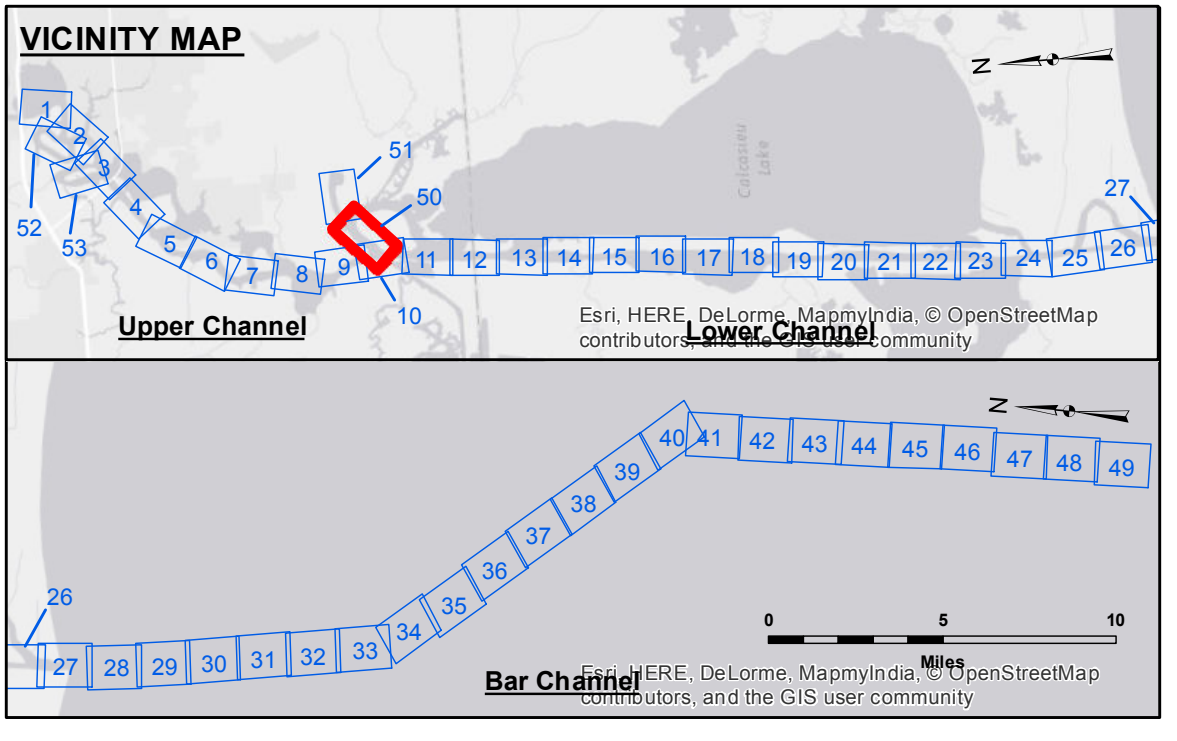
Access to Information
 The United States Government furnishes this data and the recipient accepts and uses them with the express understanding that the data is not to be used for any purpose other than that for which it was originally intended. The user is responsible for the accuracy, completeness, reliability, usability or suitability for any particular purpose of the data. The user shall not be held liable for any damage or loss, under no liability whatsoever to any person by reason of any use of the data. These data are being furnished to the recipient for their use under the terms of the license agreement between the United States Government and the recipient. The recipient may not transfer these data to others without also transferring this disclaimer. The information depicted on this map represents the results of a hydrographic survey conducted on or about the date indicated. It is not intended to represent the general condition existing at that time.

Submitted:	Surveyed By: JH/SPS
Recommended:	Plotted By: BID
Approved:	Chief, Survey Section
	Checked By: TAF
	Chief, Waterways Maintenance Section

CALCASIEU SHIP CHANNEL
DEVIL'S ELBOW - SH 1
CR_50_DE1_20150115
15 January 2015

Sheet Reference Number
50 of 53

Revision Number:
 3.6.1-20140429



LEGEND	
--- Federal Navigation Channel	● Cable Area
— Federal Navigation Center Line	□ Placement Area
— As-built Pipeline/Cable	□ Anchorage Area
..... Unconfirmed Pipeline/Cable	⊗ Obstruction Point
— Project Depth Contour	★ Wrecks-Submerged
□ Borrow Area	★ Beacon, General
● Shoalest Sounding**	◆ Red Navigation Buoy
★ Beacon, General	◆ Green Navigation Buoy

■ -15' and above
■ -15' to -20'
■ -20' to -25'
■ -25' to -32'
■ -32' to -38'
■ -38' to -40'
■ -40' to -42'
■ -42' and below

Gage Reading: RANGE D: 1.6 MLG
 Sea Conditions: CALM
 Vessel Name: M/V LAFOURCHE
 Survey Type: CONDITION
 Sounding Frequency***: Low

NOTES:
 Horizontal Coordinate System: North American Datum of 1983 (NAD83), projected to the State Plane Coordinate System (SPCS), Louisiana South Zone. Distance units in U.S. Survey Feet.
 Vertical Datum: Soundings are shown in feet and indicate depths below Mean Low Gulf Datum (MLG). Datum Relationships for gage 73585 as of December 2013: 0.0' NAVD83 (OPUS 2013) = 0.8' MLLW = 1.8' MLG or 0.0' MLLW = 1.0' MLG
 Distances on the Calcasieu River are shown at 1 mile intervals.
 The location of navigation aids are based on and provided by the U.S. Coast Guard and USACE survey crews.
 2010 Aerial Photography data source: NAIP
 Reference is N.O.A.A. Navigation Chart No. 11339.
 ** Shoalest Sounding per Quarter per Reach.
 *** High frequency (200 kHz) survey data represents the first signal return at a sounding location and will include suspended solids, known as "fluff", if present. Low frequency (20 kHz) survey data normally penetrates through this "fluff" layer to depict elevations of consolidated bottom material. Low frequency accuracies may vary depending on channel conditions and fathometer settings.