

**Distribution Liability:** The data represents the results of data collection/processing for a specific US Army Corps of Engineers project. It is only valid for its intended use, content, time and accuracy specifications. The user is responsible for the results of any application of the data for other than its intended purpose.

**Data Constraints:** Hydrographic survey data is subject to change rapidly due to several factors including but not limited to changing bathymetry, sedimentation, and other factors. The user is responsible for the hydrographic conditions when developing after the date of the survey. Product maintainers should not rely upon this data.

**Access Constraints:** The United States Government furnishes these data and the recipient accepts and uses them with the express understanding that the data is provided for informational purposes only, and is not to be used for any purpose other than that for which it was intended. The user is responsible for the results of any application of the data for other than its intended purpose. These data are not to be used for any purpose other than that for which they were intended. The recipient may not transfer these data to others without also transferring this Disclaimer. The information depicted on the map represents the results of a survey and is not to be used for any purpose other than that for which it was intended.

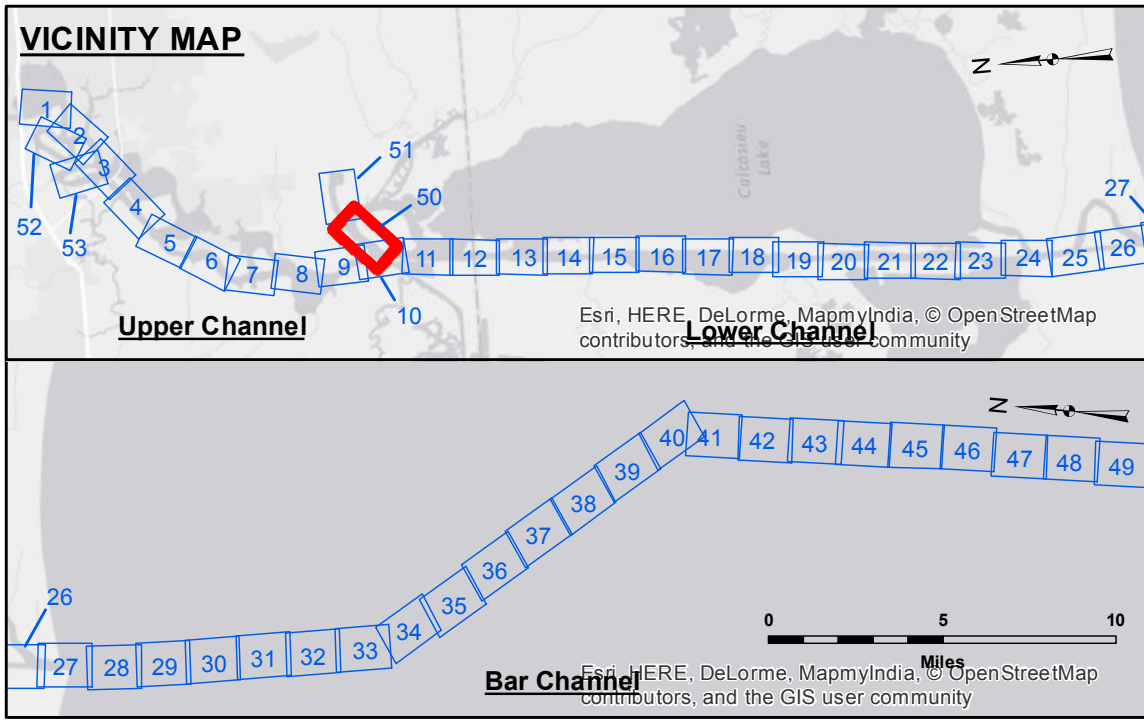
Submitted:	Surveyed By: sjf_jdh
Recommended:	Plotted By: BITD
Approved:	Checked By: TAF

U.S. ARMY CORPS OF ENGINEERS  
NEW ORLEANS DISTRICT

**CALCASIEU SHIP CHANNEL**  
**DEVIL'S ELBOW - SH 1**  
**CR\_50\_DE1\_20151029**  
**29 October 2015**

**Sheet Reference Number**  
**50 of 53**

Revision Number:  
3.8.0-20150202



LEGEND			
--- Federal Navigation Channel	● Cable Area	□ Borrow Area	■ -15' and above
— Federal Navigation Center Line	□ Placement Area	● Shoalest Sounding**	■ -15' to -20'
— As-built Pipeline/Cable	□ Anchorage Area	★ Beacon, General	■ -20' to -25'
..... Unconfirmed Pipeline/Cable	⊗ Obstruction Point	◆ Red Navigation Buoy	■ -25' to -32'
— Project Depth Contour	⚓ Wrecks-Submerged	◆ Green Navigation Buoy	■ -32' to -38'
			■ -38' to -40'
			■ -40' to -42'
			■ -42' and below

Gage Reading: RANGE D: 2.43 MLG  
Sea Conditions: CALM  
Vessel Name: M/V TECHE  
Survey Type: CONDITION  
Sounding Frequency\*\*\*: LOW

**NOTES:**  
Horizontal Coordinate System: North American Datum of 1983 (NAD83), projected to the State Plane Coordinate System (SPCS), Louisiana South Zone. Distance units in U.S. Survey Feet.  
Vertical Datum: Soundings are shown in feet and indicate depths below Mean Low Gull Datum (MLG). Datum Relationships for gage 73585 as of December 2013: 0.0' NAVD83 (OPUS 2013) = 0.8' MLLW = 1.8' MLG or 0.0' MLLW = 1.0' MLG  
Distances on the Calcasieu River are shown at 1 mile intervals.  
The location of navigation aids are based on and provided by the U.S. Coast Guard and USACE survey crews.  
2010 Aerial Photography data source: NAIP  
Reference is N.O.A. Navigation Chart No. 11339.  
\*\* Shoalest Sounding per Quarter per Reach.  
\*\*\* High frequency (200 kHz) survey data represents the first signal return at a sounding location and will include suspended solids, known as "fluff", if present. Low frequency (20 kHz) survey data normally penetrates through this "fluff" layer to depict elevations of consolidated bottom material. Low frequency accuracies may vary depending on channel conditions and fathometer settings.