

**US Army Corps of Engineers District: CEMVN**

**DISCLAIMER:** The United States Government furnishes this data and the recipient accepts and uses them with the express understanding that the data is provided for informational purposes only. It is not to be used for any purpose other than that for which it was provided. The user is responsible for the results of any use of this data. The user is not to be held liable for any damage or injury resulting from the use of this data. The user is not to be held liable for any damage or injury resulting from the use of this data. The user is not to be held liable for any damage or injury resulting from the use of this data.

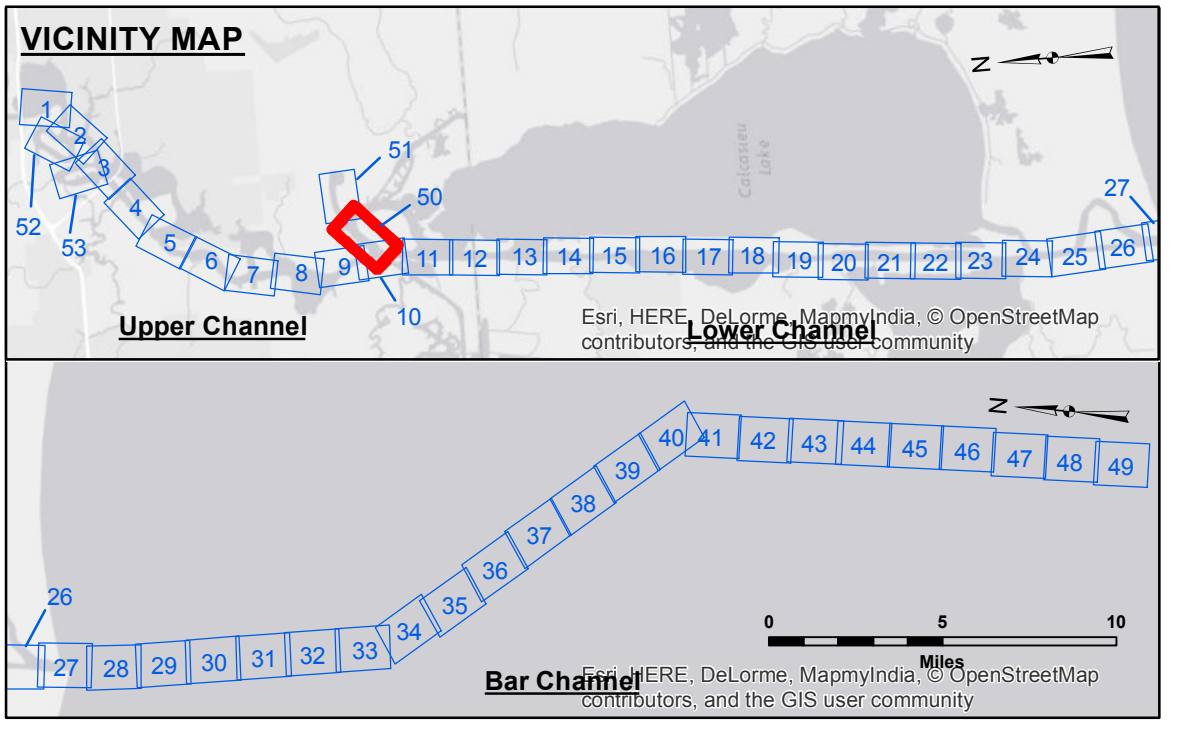
**Access/Consent:** The United States Government furnishes this data and the recipient accepts and uses them with the express understanding that the data is provided for informational purposes only. It is not to be used for any purpose other than that for which it was provided. The user is responsible for the results of any use of this data. The user is not to be held liable for any damage or injury resulting from the use of this data. The user is not to be held liable for any damage or injury resulting from the use of this data.

Submitted:	Surveyed By: PM, JH
Recommended:	Plotted By: AO
Approved:	Checked By: AO

U.S. ARMY CORPS OF ENGINEERS  
NEW ORLEANS DISTRICT

**CALCASIEU SHIP CHANNEL**  
**DEVIL'S ELBOW - SH 1**  
**CR\_50\_DEI\_20170216**  
**16 February 2017**

**Sheet Reference Number**  
**50 of 53**



**LEGEND**

--- Federal Navigation Channel	○ Cable Area	3 Fluff Thickness (feet)*	■ -15' and above
— Federal Navigation Center Line	□ Placement Area	● Shoalest Sounding**	■ -15' to -20'
— As-built Pipeline/Cable	⊗ Anchorage Area	★ Beacon, General	■ -20' to -25'
..... Unconfirmed Pipeline/Cable	⊗ Obstruction Point	◆ Red Navigation Buoy	■ -25' to -32'
— Project Depth Contour	⊗ Wrecks-Submerged	◆ Green Navigation Buoy	■ -32' to -38'
			■ -38' to -40'
			■ -40' to -42'
			■ -42' and below

**NOTES:**

Horizontal Coordinate System:  
North American Datum of 1983 (NAD83), projected to the State Plane Coordinate System (SPCS), Louisiana South Zone. Distance units in U.S. Survey Feet.

Vertical Datum:  
Soundings are shown in feet and indicate depths below Mean Low Gulf Datum (MLG).  
Datum Relationships for gage 73585 as of December 2013:  
0.0' NAVD83 (OPUS 2013) = 0.8' MLLW = 1.8' MLG or 0.0' MLLW = 1.0' MLG

Distances on the Calcasieu River are shown at 1 mile intervals.

The location of navigation aids are base on and provided by the U.S. Coast Guard and USACE survey crews.

2015 Aerial Photography data source: NAIP  
Reference is N.O.A.A. Navigation Chart No. 11339.

\* Difference between high and low frequency elevations where greater than 1.0'.  
\*\* Shoalest Sounding per Quarter per Reach.

\*\*\* High frequency (200 kHz) survey data represents the first signal return at a sounding location and will include suspended solids, known as "fluff", if present. Low frequency (20 kHz) survey data normally penetrates through this "fluff" layer to depict elevations of consolidated bottom material. Low frequency accuracies may vary depending on channel conditions and fathometer settings.

Gage Reading: RNG D: 1.2 MLG AVG  
Sea Conditions: CALM  
Vessel Name: OB-167  
Survey Type: CONDITION  
Sounding Frequency\*\*\*: LOW

0 400 800 1,200 1,600 Feet