

Distribution Liability: The data represents the results of data collection/processing for a specific US Army Corps of Engineers project. It is only valid for its intended use, context, time and accuracy specifications. The user is responsible for the results. The user's use of the data is at their own risk. The user's use of the data is not intended for navigation purposes.

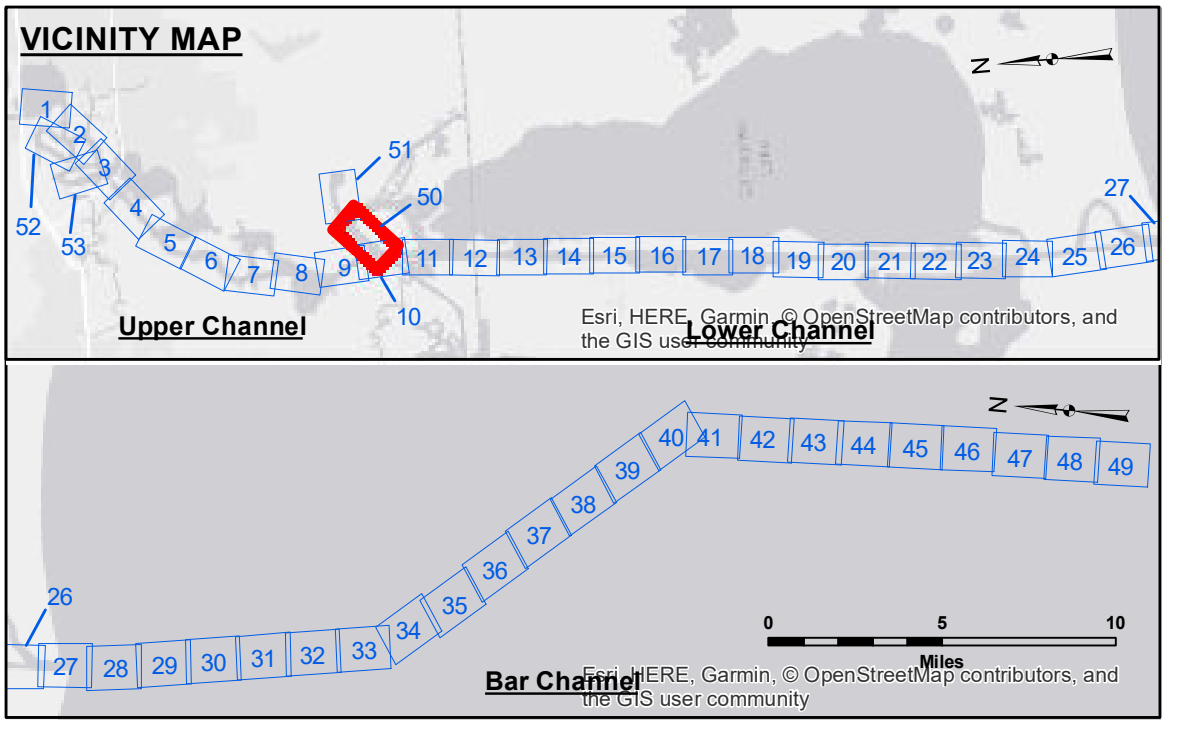
Data Constraints: Hydrographic survey data is subject to change. The user is responsible for the accuracy of the data. The user's use of the data is at their own risk. The user's use of the data is not intended for navigation purposes. The user's use of the data is not intended for navigation purposes.

Access Constraints: The United States Government furnishes these data and the recipient accepts and uses them with the express understanding that the data are not to be used for any purpose other than that for which they were provided. The user is responsible for the results. The user's use of the data is at their own risk. The user's use of the data is not intended for navigation purposes.

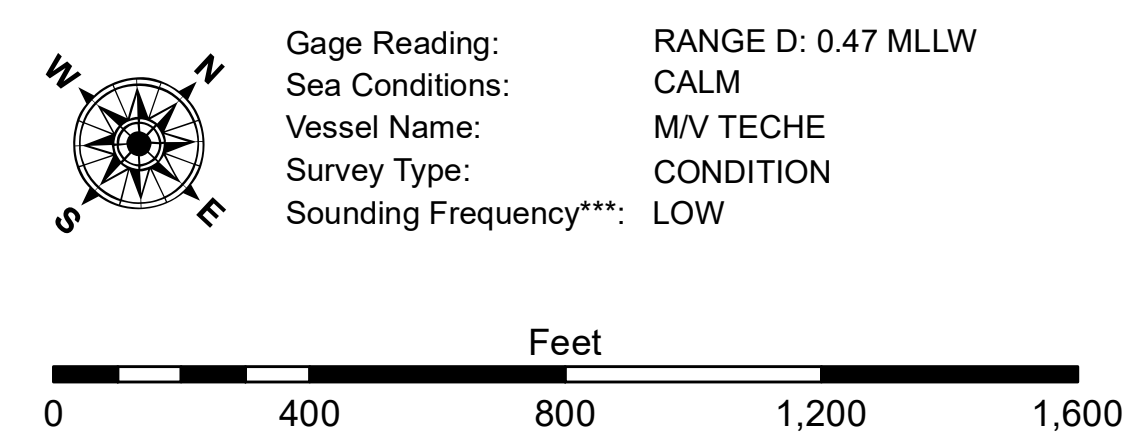
U.S. ARMY CORPS OF ENGINEERS NEW ORLEANS DISTRICT	
Submitted: _____	Surveyed By: SPS_JH
Recommended: _____	Plotted By: BD
Approved: _____	Checked By: AC

CALCASIEU SHIP CHANNEL
DEVIL'S ELBOW - SH 1
CR_50_DE1_20180307_CS
07 March 2018

Sheet Reference Number
50 of 53



LEGEND			
	Federal Navigation Channel		Cable Area
	Federal Navigation Center Line		Placement Area
	As-built Pipeline/Cable		Fluff Thickness (feet)*
	Unconfirmed Pipeline/Cable		Shoalest Sounding**
	Project Depth Contour		Beacon, General
	Obstruction Point		Red Navigation Buoy
	Wrecks-Submerged		Green Navigation Buoy
			-16' and above
			-16' to -21'
			-21' to -26'
			-26' to -33'
			-33' to -39'
			-39' to -41'
			-41' to -43'
			-43' and below



NOTES:
 Horizontal Coordinate System: North American Datum of 1983 (NAD83), projected to the State Plane Coordinate System (SPCS), Louisiana South Zone. Distance units in U.S. Survey Feet.
 Vertical Datum: Soundings are shown in feet and indicate depths below Mean Lower Low Water Datum (MLLW). Datum Relationships for gage 73585 as of December 2013: 0.0' NAVD83 (OPUS 2013) = 0.8' MLLW = 1.8' MLG or 0.0' MLLW = 1.0' MLG
 Distances on the Calcasieu River are shown at 1 mile intervals.
 The location of navigation aids are base on and provided by the U.S. Coast Guard and USACE survey crews.
 2015 Aerial Photography data source: NAIP
 Reference is N.O.A.A. Navigation Chart No. 11339.
 * Difference between high and low frequency elevations where greater than 1.0'.
 ** Shoalest Sounding per Quarter per Reach.
 *** High frequency (200 kHz) survey data represents the first signal return at a sounding location and will include suspended solids, known as "fluff", if present. Low frequency (20 kHz) survey data normally penetrates through this "fluff" layer to depict elevations of consolidated bottom material. Low frequency accuracies may vary depending on channel conditions and fathometer settings.