

US Army Corps of Engineers District: CEMVN

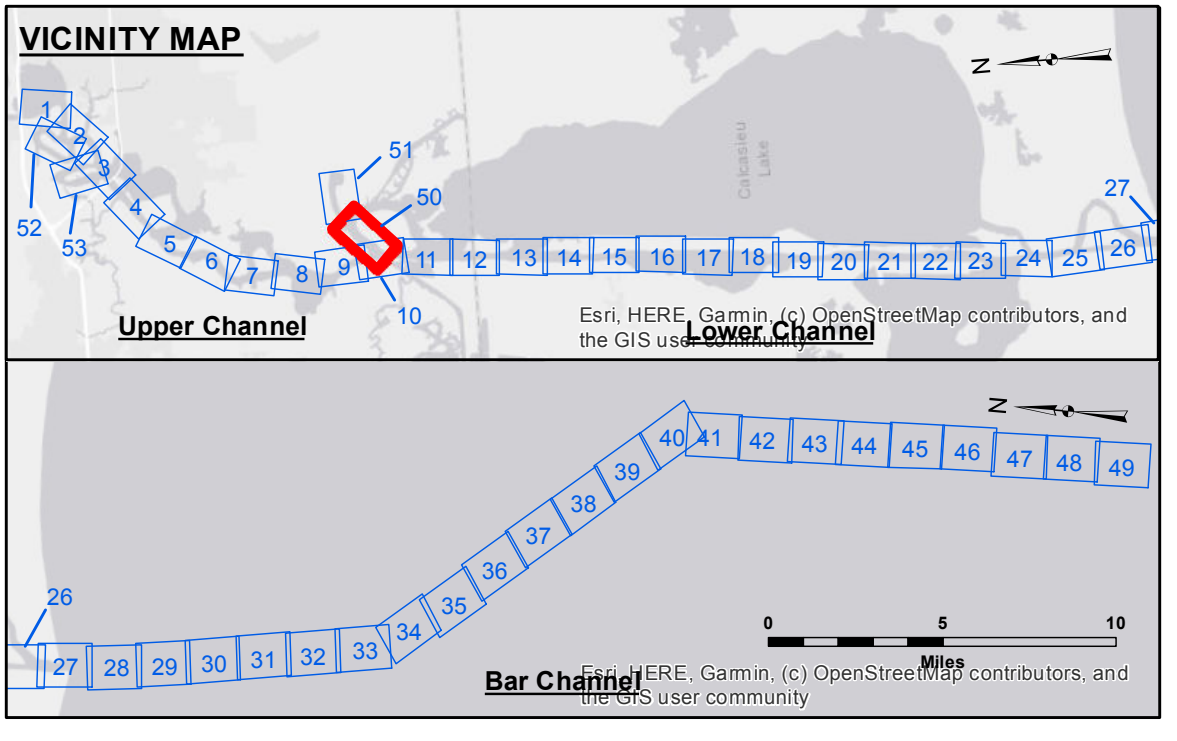
Accession: The United States Government furnishes these data and the recipient accepts and uses them with the express understanding that the data are not to be used for any purpose other than that for which they were originally collected, and that the user is responsible for the accuracy, completeness, readability, usability or suitability for any particular purpose of the data. The user is responsible for the accuracy, completeness, readability, usability or suitability for any particular purpose of the data. The user is responsible for the accuracy, completeness, readability, usability or suitability for any particular purpose of the data. The user is responsible for the accuracy, completeness, readability, usability or suitability for any particular purpose of the data.

Accession: The United States Government furnishes these data and the recipient accepts and uses them with the express understanding that the data are not to be used for any purpose other than that for which they were originally collected, and that the user is responsible for the accuracy, completeness, readability, usability or suitability for any particular purpose of the data. The user is responsible for the accuracy, completeness, readability, usability or suitability for any particular purpose of the data. The user is responsible for the accuracy, completeness, readability, usability or suitability for any particular purpose of the data.

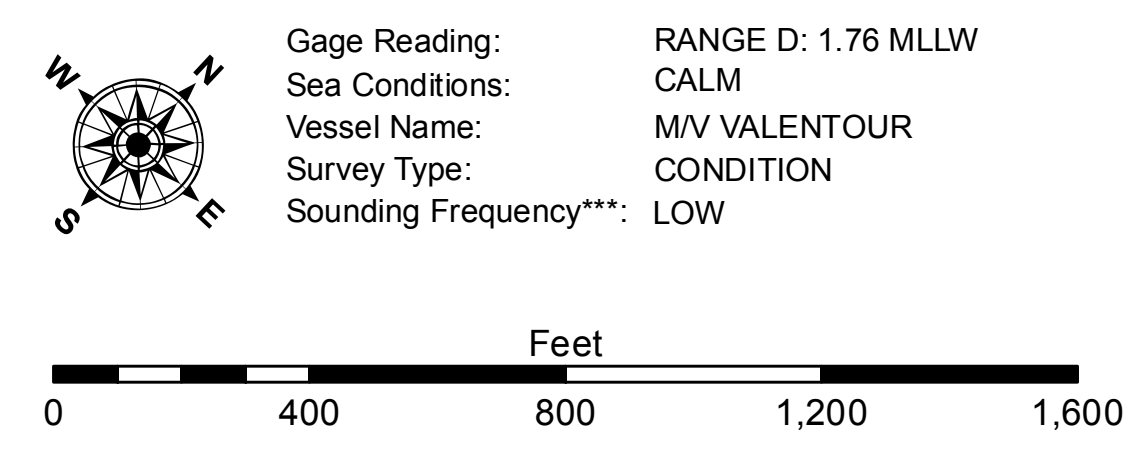
U.S. ARMY CORPS OF ENGINEERS NEW ORLEANS DISTRICT	Surveyed By: RYLAND/ADAMS
Submitted:	Plotted By: BD
Revised/Amended: Chief, Survey Section	Checked By: AC
Approved:	Chief, Waterways Maintenance Section

CALCASIEU SHIP CHANNEL
DEVIL'S ELBOW - SH 1
CR_50_DE1_20200709_CS
09 July 2020

Sheet Reference Number
50 of 53



LEGEND		Fluff Thickness (feet)*	
--- Federal Navigation Channel	○ Cable Area	3	-16' and above
— Federal Navigation Center Line	□ Placement Area	● Shoalest Sounding**	-16' to -21'
— As-built Pipeline/Cable	□ Anchorage Area	★ Beacon, General	-21' to -26'
..... Unconfirmed Pipeline/Cable	⊗ Obstruction Point	◆ Red Navigation Buoy	-26' to -33'
— Project Depth Contour	⚓ Wrecks-Submerged	◆ Green Navigation Buoy	-33' to -39'
			-39' to -41'
			-41' to -43'
			-43' and below



NOTES:
Horizontal Coordinate System:
North American Datum of 1983 (NAD83), projected to the State Plane Coordinate System (SPCS), Louisiana South Zone. Distance units in U.S. Survey Feet.

Vertical Datum:
Soundings are shown in feet and indicate depths below Mean Lower Low Water Datum (MLLW). Datum Relationships for gage 73585 as of December 2013:
0.0' NAVD83 (OPUS 2013) = 0.8' MLLW = 1.8' MLG or 0.0' MLLW = 1.0' MLG

Distances on the Calcasieu River are shown at 1 mile intervals.

The location of navigation aids are based on and provided by the U.S. Coast Guard and USACE survey crews.

2015 Aerial Photography data source: NAIP
Reference is N.O.A.A. Navigation Chart No. 11339.

* Difference between high and low frequency elevations where greater than 1.0'.
** Shoalest Sounding per Quarter per Reach.

*** High frequency (200 kHz) survey data represents the first signal return at a sounding location and will include suspended solids, known as "fluff", if present. Low frequency (20 kHz) survey data normally penetrates through this "fluff" layer to depict elevations of consolidated bottom material. Low frequency accuracies may vary depending on channel conditions and fathometer settings.