

US Army Corps of Engineers District: CEMVN

DISCLAIMER
 The information depicted on this map represents the results of a hydrographic survey conducted by the U.S. Army Corps of Engineers. It is not intended for navigation. The user is responsible for the accuracy, completeness, and timeliness of the data. The Corps of Engineers does not warrant the accuracy or completeness of the data for any purpose other than that for which it was collected. The Corps of Engineers does not accept responsibility for changes in the hydrographic conditions which develop after the date of the survey. Product maintainers should not rely solely upon it.

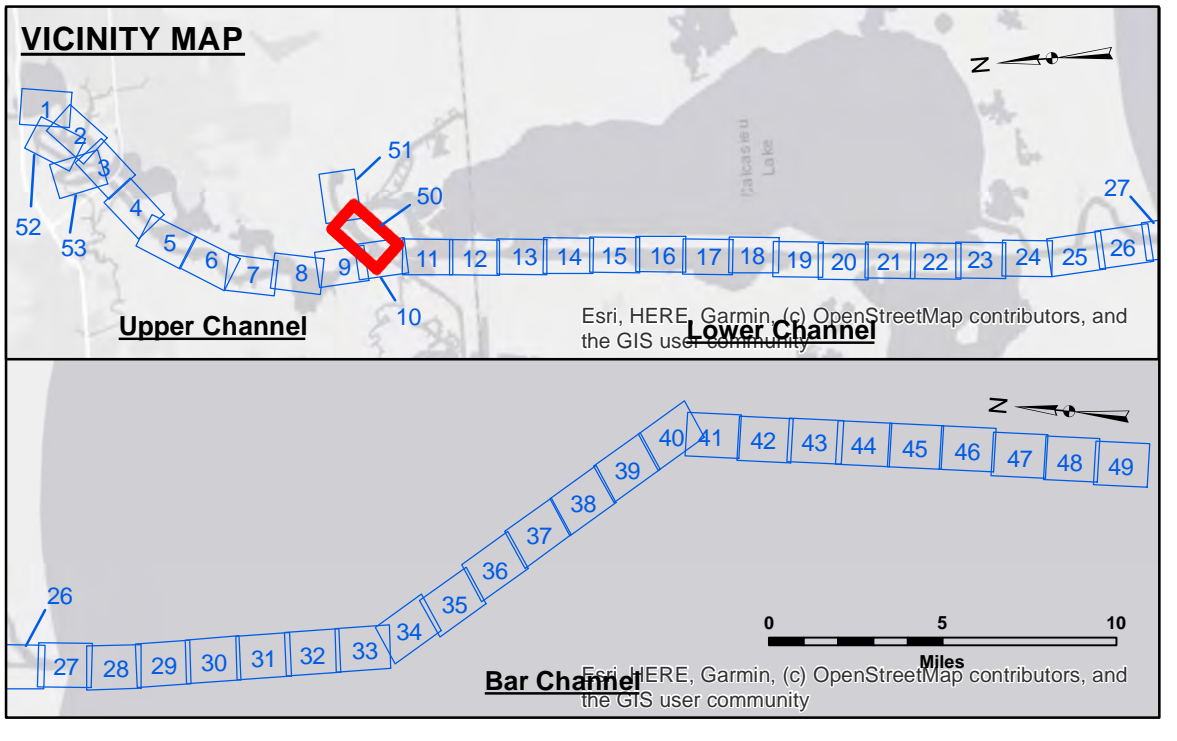
Access Constraints: The United States Government furnishes these data and the recipient accepts and uses them with the express understanding that the data are not to be used for any purpose other than that for which they were collected. The user is responsible for the accuracy, completeness, and timeliness of the data. The Corps of Engineers does not warrant the accuracy or completeness of the data for any purpose other than that for which it was collected. The Corps of Engineers does not accept responsibility for changes in the hydrographic conditions which develop after the date of the survey. Product maintainers should not rely solely upon it.

Submitted:	Surveyed By: SP-JS	Plotted By: BD	Checked By: AD/JH
Recommended:	Chart, Survey Section		
Approved:	Chart, Waterways Maintenance Section		

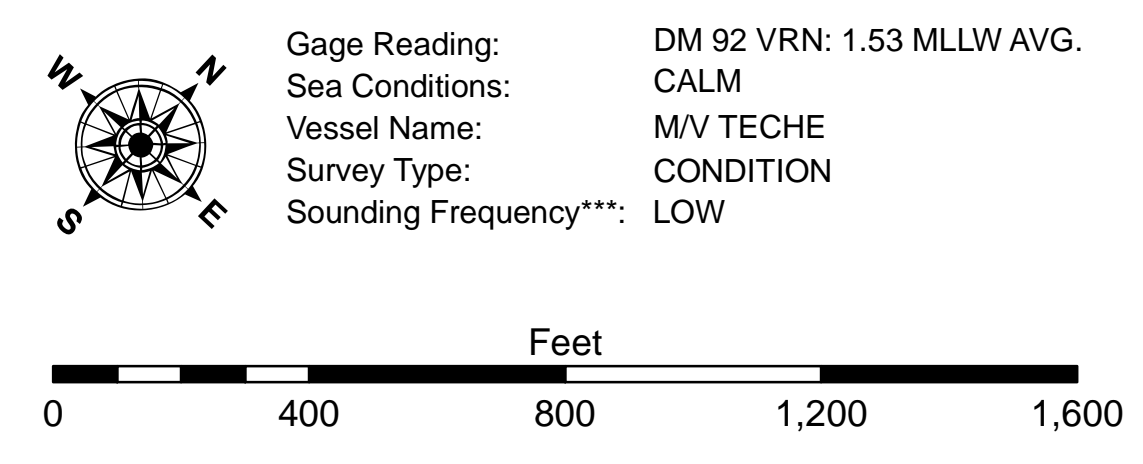
CALCASIEU SHIP CHANNEL
DEVIL'S ELBOW - SH 1
CR_50_DE1_20240723_CS
23 July 2024

Sheet Reference Number
50 of 53

Revision Number:
 4.2-20240620



LEGEND		
--- Federal Navigation Channel	○ Cable Area	3 Fluff Thickness (feet)*
— Federal Navigation Center Line	□ Placement Area	● Shoalest Sounding**
— As-built Pipeline/Cable	⊗ Anchorage Area	★ Beacon, General
..... Unconfirmed Pipeline/Cable	⊗ Obstruction Point	◆ Red Navigation Buoy
— Project Depth Contour	⚓ Wrecks-Submerged	◇ Green Navigation Buoy



NOTES:
 Horizontal Coordinate System:
 North American Datum of 1983 (NAD83), projected to the State Plane Coordinate System (SPCS), Louisiana South Zone. Distance units in U.S. Survey Feet.

Vertical Datum:
 Soundings are shown in feet and indicate depths below Mean Lower Low Water Datum (MLLW). Datum Relationships for gage 73585 as of December 2013:
 0.0' NAVD83 (OPUS 2013) = 0.8' MLLW = 1.8' MLG or 0.0' MLLW = 1.0' MLG

Distances on the Calcasieu River are shown at 1 mile intervals.

The location of navigation aids are based on and provided by the U.S. Coast Guard and USACE survey crews.

2022 Aerial Photography data source: PAR LLC
 Reference is N.O.A. Navigation Chart No. 11339.

* Difference between high and low frequency elevations where greater than 1.0'.
 ** Shoalest Sounding per Quarter per Reach.
 *** High frequency (200 kHz) survey data represents the first signal return at a sounding location and will include suspended solids, known as "fluff", if present. Low frequency (20 kHz) survey data normally penetrates through this "fluff" layer to depict elevations of consolidated bottom material. Low frequency accuracies may vary depending on channel conditions and fathometer settings.