

US Army Corps of Engineers District: CEMVN

DISCLAIMER: The United States Government furnishes these data and the recipient accepts and uses them with the express understanding that the data are not to be used for any purpose other than that for which they were prepared. The user is responsible for the results of any use of the data for other than the intended purpose.

Distribution Liability: The data represents the results of data collection/processing for a specific US Army Corps of Engineers project. It is only valid for its intended use, content, time and accuracy specifications. The user is responsible for the results of any use of the data for other than the intended purpose.

Data Constraints: Hydrographic survey data is subject to change rapidly due to several factors including but not limited to changing bathymetry, sedimentation, and other factors. The user is responsible for the results of any use of the data for other than the intended purpose.

Hydrographic Survey Data: The information depicted on this map represents the results of a hydrographic survey conducted on the date of the survey. The user is responsible for the results of any use of the data for other than the intended purpose.

Access Constraints: The United States Government furnishes these data and the recipient accepts and uses them with the express understanding that the data are not to be used for any purpose other than that for which they were prepared. The user is responsible for the results of any use of the data for other than the intended purpose.

Liability: The user is responsible for the results of any use of the data for other than the intended purpose.

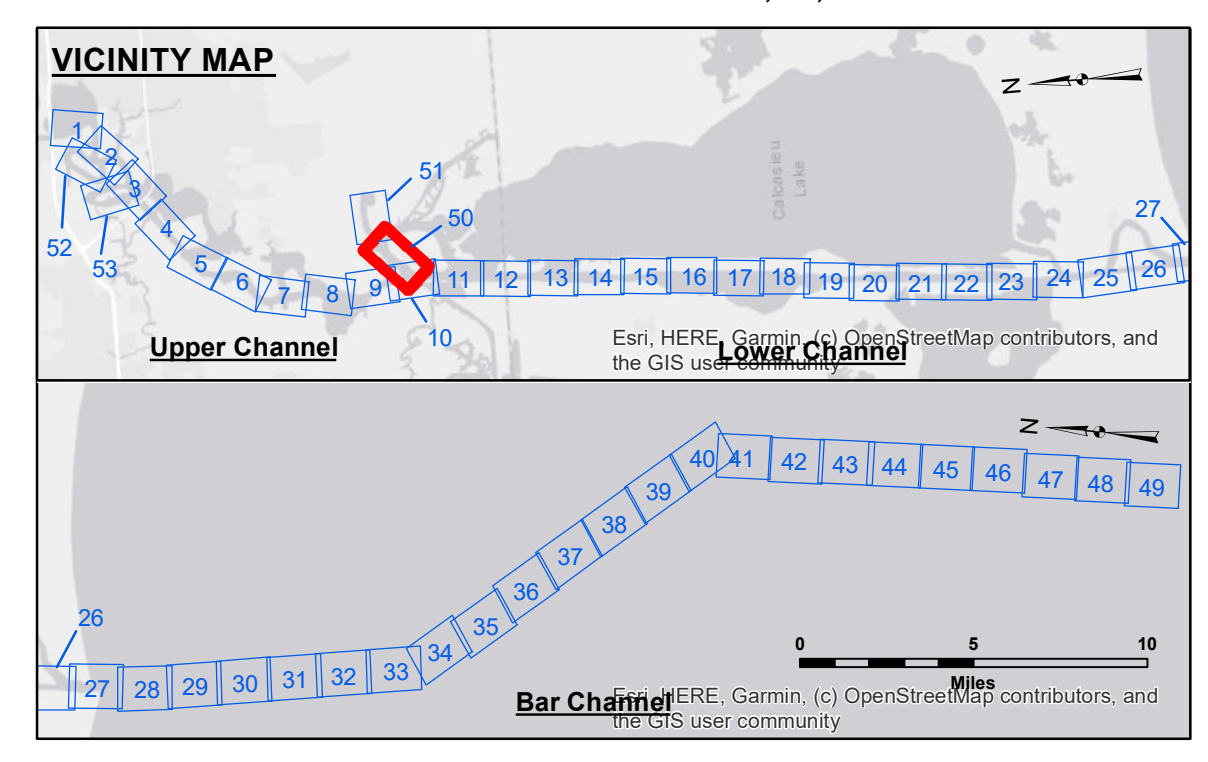
Information: The information depicted on this map represents the results of a hydrographic survey conducted on the date of the survey. The user is responsible for the results of any use of the data for other than the intended purpose.

Submitted:	Surveyed By: SP-JS	Plotted By: BD	Checked By: ADJH
Recommended:	Chart, Survey Section		
Approved:	Chart, Waterways Maintenance Section		

U.S. ARMY CORPS OF ENGINEERS
NEW ORLEANS DISTRICT

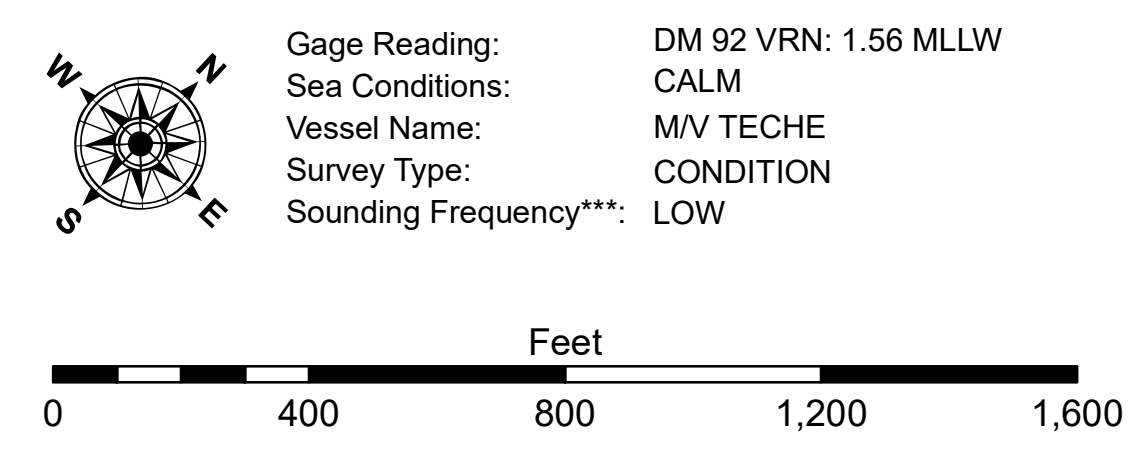
CALCASIEU SHIP CHANNEL
DEVIL'S ELBOW - SH 1
CR_50_DE1_20240826_CS
26 August 2024

Sheet Reference Number
50 of 53



LEGEND

--- Federal Navigation Channel	○ Cable Area	3 Fluff Thickness (feet)*	■ -16' and above
— Federal Navigation Center Line	□ Placement Area	● Shoalest Sounding**	■ -16' to -21'
— As-built Pipeline/Cable	⊗ Anchorage Area	★ Beacon, General	■ -21' to -26'
..... Unconfirmed Pipeline/Cable	⊗ Obstruction Point	◆ Red Navigation Buoy	■ -26' to -33'
— Project Depth Contour	⚓ Wrecks-Submerged	◆ Green Navigation Buoy	■ -33' to -39'
			■ -39' to -41'
			■ -41' to -43'
			■ -43' and below



NOTES:

Horizontal Coordinate System:
North American Datum of 1983 (NAD83), projected to the State Plane Coordinate System (SPCS), Louisiana South Zone. Distance units in U.S. Survey Feet.

Vertical Datum:
Soundings are shown in feet and indicate depths below Mean Lower Low Water Datum (MLLW). Datum Relationships for gage 73585 as of December 2013:
0.0' NAVD83 (OPUS 2013) = 0.8' MLLW = 1.8' MLG or 0.0' MLLW = 1.0' MLG

Distances on the Calcasieu River are shown at 1 mile intervals.

The location of navigation aids are based on and provided by the U.S. Coast Guard and USACE survey crews.

2022 Aerial Photography data source: PAR LLC
Reference is N.O.A. Navigation Chart No. 11339.
* Difference between high and low frequency elevations where greater than 1.0'.
** Shoalest Sounding per Quarter per Reach.
*** High frequency (200 kHz) survey data represents the first signal return at a sounding location and will include suspended solids, known as "fluff", if present. Low frequency (20 kHz) survey data normally penetrates through this "fluff" layer to depict elevations of consolidated bottom material. Low frequency accuracies may vary depending on channel conditions and fathometer settings.