

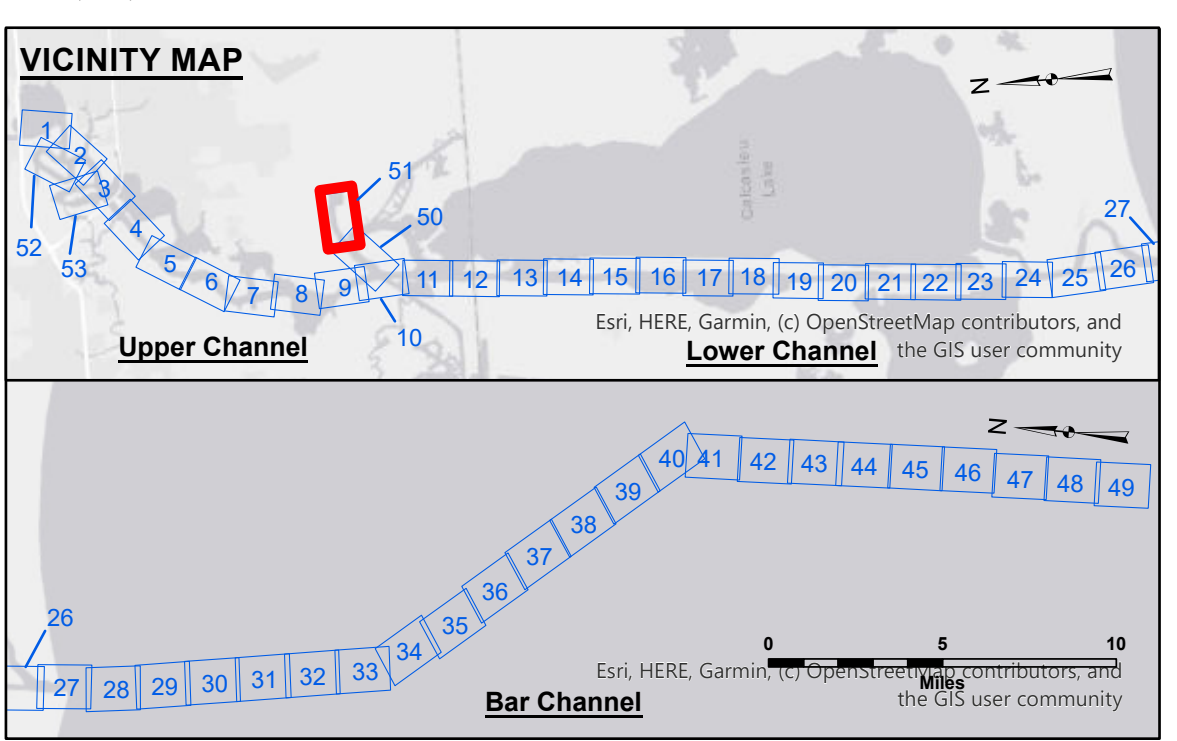
DISCLAIMER: The data represented on this map is the result of a collection of data from various sources. The Corps of Engineers does not warrant the accuracy, completeness, or reliability of the data. The user is responsible for the results of any application of the data for other than its intended purpose. The Corps of Engineers is not responsible for any damage or injury resulting from the use of this data. The Corps of Engineers is not responsible for any damage or injury resulting from the use of this data.

DISCLAIMER: The United States Government furnishes these data and the recipient accepts and uses them with the express understanding that the Government makes no warranty, expressed or implied, concerning the accuracy, completeness, or reliability of the data furnished. The recipient shall be responsible for the use of the data for any purpose other than that for which it was furnished. The recipient shall be responsible for the use of the data for any purpose other than that for which it was furnished. The recipient shall be responsible for the use of the data for any purpose other than that for which it was furnished.

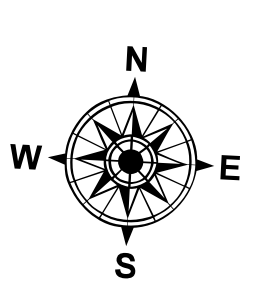
Submitted:	Surveyed By: SPJS
Recommended:	Plotted By: JHT
Approved:	Checked By: JHT

**CALCASIEU SHIP CHANNEL
DEVIL'S ELBOW - SH 2
CR_51_DE2_20250414_CS
14 April 2025**

**Sheet Reference Number
51 of 53**



LEGEND		
--- Federal Navigation Channel	○ Cable Area	3 Fluff Thickness (feet)*
— Federal Navigation Center Line	□ Placement Area	● Shoalest Sounding**
— As-built Pipeline/Cable	⊗ Anchorage Area	☆ Beacon, General
..... Unconfirmed Pipeline/Cable	⊗ Obstruction Point	◆ Red Navigation Buoy
— Project Depth Contour	⊗ Wrecks-Submerged	◆ Green Navigation Buoy



Gage Reading: DM 92 VRN: 1.67 MLLW AVG
 Sea Conditions: CHOP
 Vessel Name: MV TECHE
 Survey Type: CONDITION
 Sounding Frequency***: LOW

Feet
 0 400 800 1,200 1,600

NOTES:
 Horizontal Coordinate System: North American Datum of 1983 (NAD83), projected to the State Plane Coordinate System (SPCS), Louisiana South Zone. Distance units in U.S. Survey Feet.
 Vertical Datum: Soundings are shown in feet and indicate depths below Mean Lower Low Water Datum (MLLW). Datum Relationships for gage 73585 as of December 2013: 0.0' NAVD83 (OPUS 2013) = 0.8' MLLW = 1.8' MLG or 0.0' MLLW = 1.0' MLG
 Distances on the Calcasieu River are shown at 1 mile intervals.
 The location of navigation aids are base on and provided by the U.S. Coast Guard and USACE survey crews.
 2022 Aerial Photography data source: PAR LLC
 Reference is N.O.A.A. Navigation Chart No. 11339.
 * Difference between high and low frequency elevations where greater than 1.0'.
 ** Shoalest Sounding per Quarter per Reach.
 *** High frequency (200 kHz) survey data represents the first signal return at a sounding location and will include suspended solids, known as "fluff", if present. Low frequency (20 kHz) survey data normally penetrates through this "fluff" layer to depict elevations of consolidated bottom material. Low frequency accuracies may vary depending on channel conditions and fathometer settings.