

US Army Corps of Engineers District: CEMVN

Access/Use: The United States Government furnishes these data and the recipient accepts and uses them with the express understanding that they are not to be used for any purpose other than that for which they were prepared, expressed, or implied concerning the accuracy, completeness, reliability, usability or suitability for any particular purpose of the recipient. The user is responsible for the results of any use of these data. The recipient may not transfer these data to others without also transferring this Disclaimer. The information depicted on this map represents the results of a survey conducted on the ground and is not to be considered as a representation of the general condition existing at that time.

Distribution Liability: The data represents the results of data collection/processing for a specific US Army Corps of Engineers project. It is only valid for its intended use, context, time and accuracy specifications. The user is responsible for the results of any use of these data. The recipient may not transfer these data to others without also transferring this Disclaimer. The information depicted on this map represents the results of a survey conducted on the ground and is not to be considered as a representation of the general condition existing at that time.

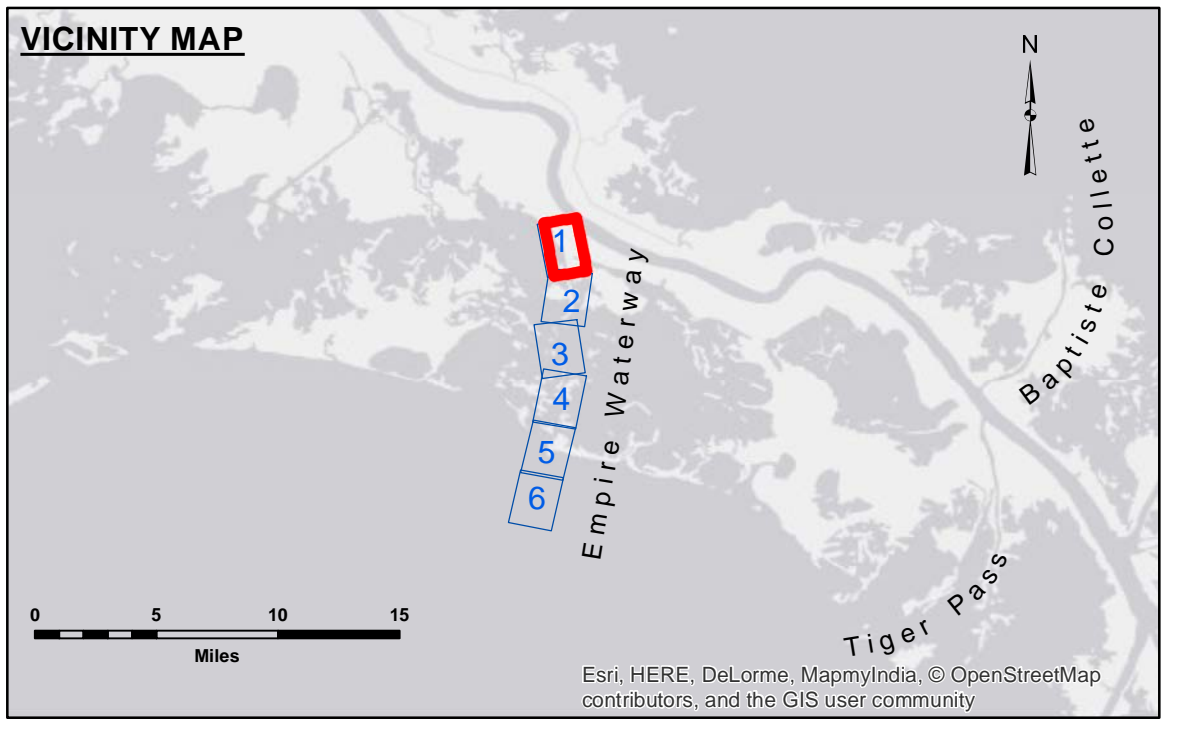
Data Constraints: Hydrographic survey data is subject to change rapidly due to several factors including but not limited to dredging, sedimentation, and other changes in the hydrographical conditions which develop after the date of the survey. The user is responsible for the results of any use of these data. The recipient may not transfer these data to others without also transferring this Disclaimer. The information depicted on this map represents the results of a survey conducted on the ground and is not to be considered as a representation of the general condition existing at that time.

U.S. ARMY CORPS OF ENGINEERS NEW ORLEANS DISTRICT		
Submitted:	Surveyed By: SP,PM	Plotted By: AJO
Recommended:	Chief, Survey Section	Checked By: JIB
Approved:	Chief, Waterways Maintenance Section	

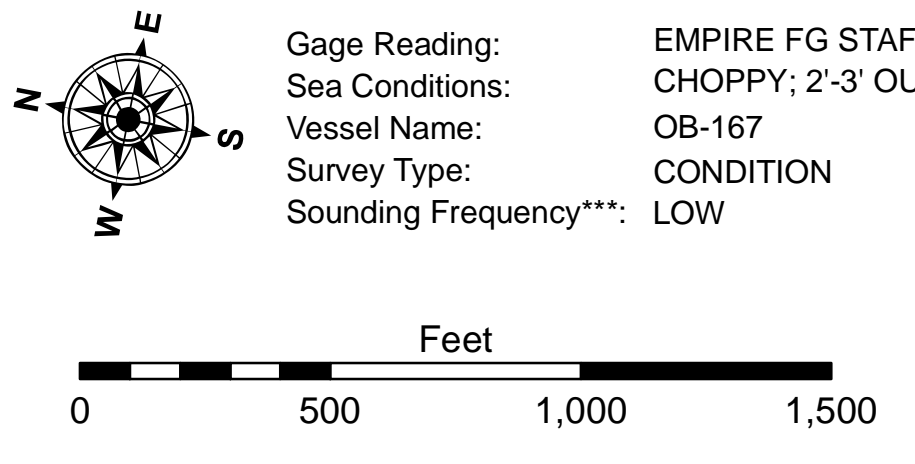
**EMPIRE WATERWAY
EMPIRE FLOOD GATE
EM_01_EFG_20150226
26 February 2015**

**Sheet
Reference
Number
1 of 6**

Revision Number:
3.6.1-20140429



LEGEND		
--- Federal Navigation Channel	○ Cable Area	□ Borrow Area
— Federal Navigation Center Line	■ Placement Area	● Shoalest Sounding**
— As-built Pipeline/Cable	□ Anchorage Area	☆ Beacon, General
..... Unconfirmed Pipeline/Cable	⊗ Obstruction Point	◆ Red Navigation Buoy
— Project Depth Contour	✶ Wrecks-Submerged	◆ Green Navigation Buoy
		■ -9' and above
		□ -9' and below



NOTES:

Horizontal Coordinate System:
North American Datum of 1983 (NAD83), projected to the State Plane Coordinate System (SPCS), Louisiana South Zone. Distance units in U.S. Survey Feet.

Vertical Datum:
Soundings are shown in feet and indicate depths below Mean Low Gulf Datum (MLG).

The location of navigation aids are based on and provided by the U.S. Coast Guard.

2010 Aerial Photography data source: NAIP 1998 DOQQ imagery shown in green from USGS.

Reference is N.O.A.A. Navigation Chart No. 11358 and 11364.

** Shoalest Sounding per Quarter per Reach.

*** High frequency (200 kHz) survey data represents the first signal return at a sounding location and will include suspended solids, known as "fluff", if present. Low frequency (20 kHz) survey data normally penetrates through this "fluff" layer to depict elevations of consolidated bottom material. Low frequency accuracies may vary depending on channel conditions and fathometer settings.

Gage Reading: EMPIRE FG STAFF: 0.5 MLG AVG
Sea Conditions: CHOPPY; 2'-3' OUTSIDE
Vessel Name: OB-167
Survey Type: CONDITION
Sounding Frequency***: LOW