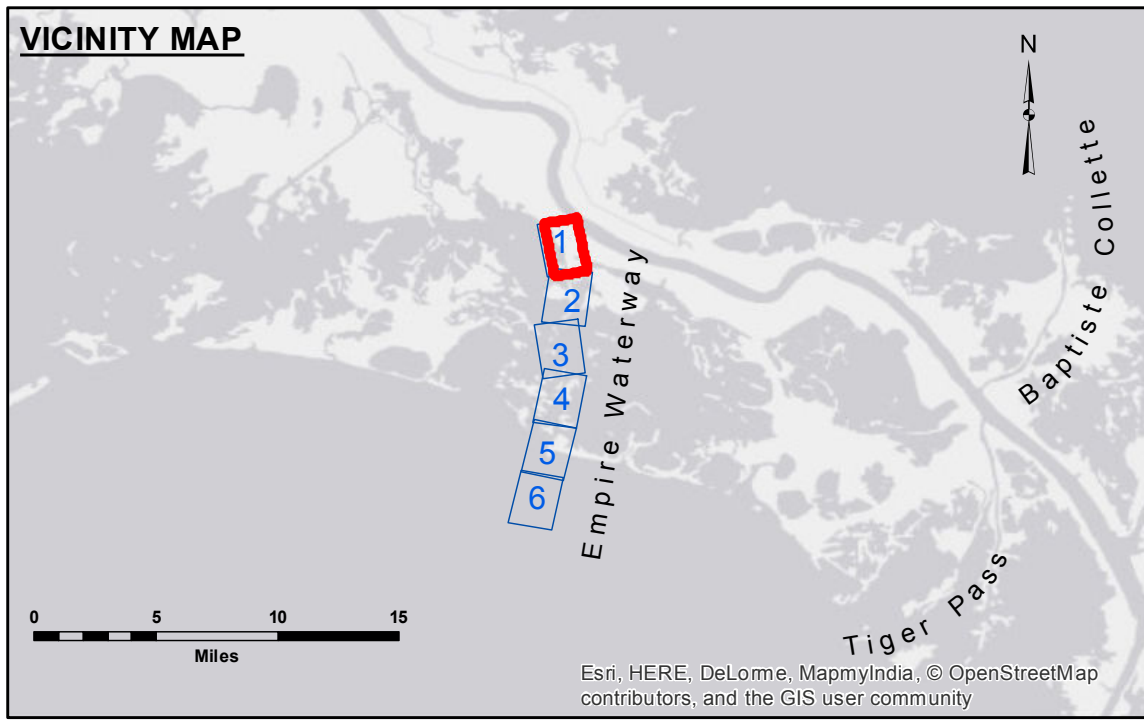


Accession: The United States Government furnishes these data and the recipient accepts and uses them with the express understanding that they are for official use only and that they are not to be distributed, reproduced, or used for any purpose other than that for which they were originally prepared. The user is responsible for the results of any use of these data. The application of the data for other than its intended purpose is at the user's risk. The information depicted on this map represents the results of a survey conducted on the ground and is not to be used for navigation purposes. The information depicted on this map represents the results of a survey conducted on the ground and is not to be used for navigation purposes. The information depicted on this map represents the results of a survey conducted on the ground and is not to be used for navigation purposes.

U.S. ARMY CORPS OF ENGINEERS NEW ORLEANS DISTRICT		
Submitted:	Surveyed By: SPPM	Plotted By: AO
Recommended: Chief Survey Section	Checked By: AO	Checked By: AO
Approved:	Chief Waterways Maintenance Section	

**EMPIRE WATERWAY
EMPIRE FLOOD GATE
EM_01_EFG_20160914
14 September 2016**

**Sheet
Reference
Number
1 of 6**



LEGEND		
--- Federal Navigation Channel	○ Cable Area	□ Borrow Area
— Federal Navigation Center Line	■ Placement Area	● Shoalest Sounding**
— As-built Pipeline/Cable	□ Anchorage Area	☆ Beacon, General
..... Unconfirmed Pipeline/Cable	⊗ Obstruction Point	◆ Red Navigation Buoy
— Project Depth Contour	⚓ Wrecks-Submerged	◆ Green Navigation Buoy
		■ -9' and above
		□ -9' and below

Gage Reading: PS STAFF: 2.0 MLG
Sea Conditions: CHOPPY
Vessel Name: OB-167
Survey Type: CONDITION
Sounding Frequency*:** LOW

NOTES:
 Horizontal Coordinate System:
 North American Datum of 1983 (NAD83), projected to the State Plane Coordinate System (SPCS), Louisiana South Zone. Distance units in U.S. Survey Feet.
 Vertical Datum:
 Soundings are shown in feet and indicate depths below Mean Low Gulf Datum (MLG).
 The location of navigation aids are base on and provided by the U.S. Coast Guard.
 2010 Aerial Photography data source: NAIP: 1998 DOQQ imagery shown in green from USGS.
 Reference is N.O.A.A. Navigation Chart No. 11358 and 11364.
 *** Shoalest Sounding per Quarter per Reach.
 *** High frequency (200 kHz) survey data represents the first signal return at a sounding location and will include suspended solids, known as "fluff", if present. Low frequency (20 kHz) survey data normally penetrates through this "fluff" layer to depict elevations of consolidated bottom material. Low frequency accuracies may vary depending on channel conditions and fathometer settings.