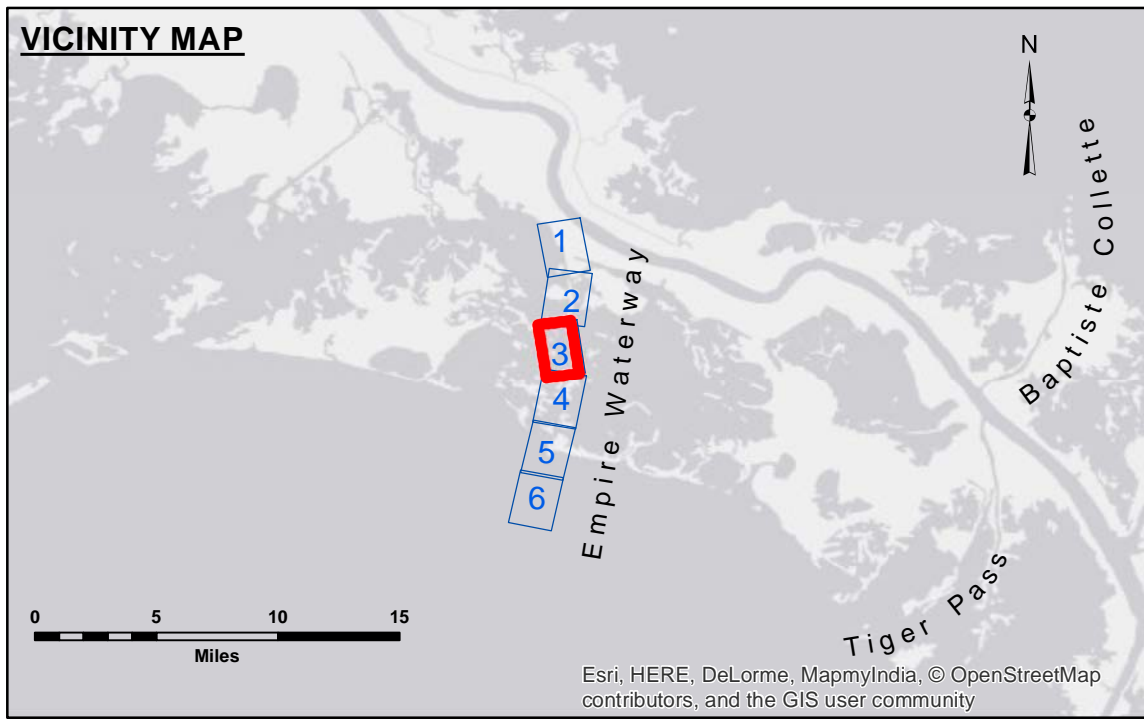


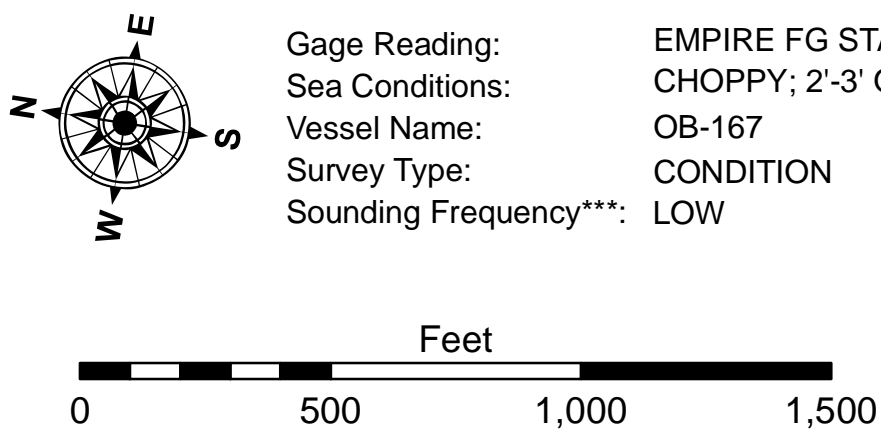
**DISCLAIMER**  
 The information depicted on this map represents the results of a survey conducted by the U.S. Army Corps of Engineers. The data represents the results of data collection for a specific project and is not intended for general use. It is only valid for its intended use, context, time and accuracy specifications. The user is responsible for the results of any use of this data for other than its intended purpose. The application of the data for other than its intended purpose is at the user's risk. The U.S. Army Corps of Engineers does not assume any responsibility for changes in the hydrographical conditions which develop after the date of the survey. The U.S. Army Corps of Engineers does not assume any responsibility for changes in the hydrographical conditions which develop after the date of the survey. The U.S. Army Corps of Engineers does not assume any responsibility for changes in the hydrographical conditions which develop after the date of the survey. The U.S. Army Corps of Engineers does not assume any responsibility for changes in the hydrographical conditions which develop after the date of the survey.

U.S. ARMY CORPS OF ENGINEERS NEW ORLEANS DISTRICT		
Submitted:	Surveyed By: SP, PM	Checked By: JIB
Recommended:	Plotted By: ATO	
Approved:	Chief, Survey Section	Chief, Waterways Maintenance Section

**EMPIRE WATERWAY  
 EMPIRE BAY  
 EM\_03\_BAY\_20150226  
 26 February 2015**



LEGEND		
--- Federal Navigation Channel	○ Cable Area	□ Borrow Area
— Federal Navigation Center Line	■ Placement Area	● Shoalest Sounding**
— As-built Pipeline/Cable	□ Anchorage Area	☆ Beacon, General
..... Unconfirmed Pipeline/Cable	⊗ Obstruction Point	◆ Red Navigation Buoy
— Project Depth Contour	⚓ Wrecks-Submerged	◆ Green Navigation Buoy
		■ -9' and above
		□ -9' and below



**NOTES:**  
 Horizontal Coordinate System:  
 North American Datum of 1983 (NAD83), projected to the State Plane Coordinate System (SPCS), Louisiana South Zone. Distance units in U.S. Survey Feet.  
 Vertical Datum:  
 Soundings are shown in feet and indicate depths below Mean Low Gulf Datum (MLG).  
 The location of navigation aids are base on and provided by the U.S. Coast Guard.  
 2010 Aerial Photography data source: NAIP, 1998 DOQQ imagery shown in green from USGS.  
 Reference is N.O.A.A. Navigation Chart No. 11358 and 11364.  
 \*\* Shoalest Sounding per Quarter per Reach.  
 \*\*\* High frequency (200 kHz) survey data represents the first signal return at a sounding location and will include suspended solids, known as "fluff", if present. Low frequency (20 kHz) survey data normally penetrates through this "fluff" layer to depict elevations of consolidated bottom material. Low frequency accuracies may vary depending on channel conditions and fathometer settings.

**Sheet  
 Reference  
 Number  
 3 of 6**