

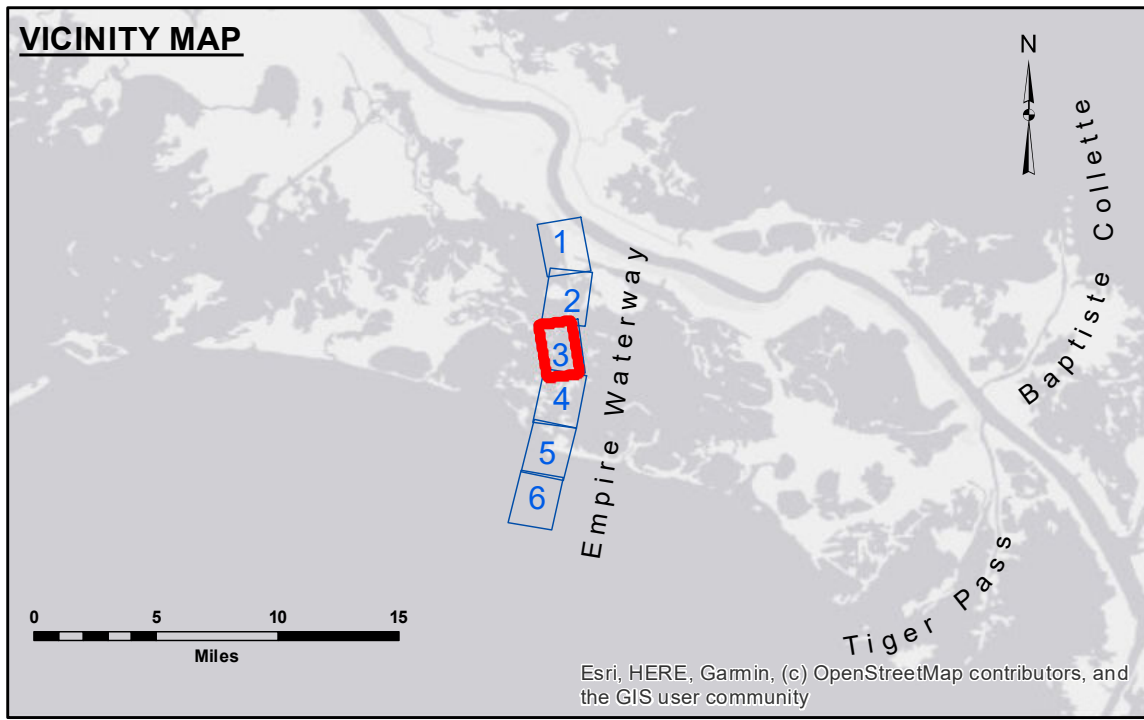
AGENCY: The United States Government furnishes these data and the recipient accepts and uses them with the express understanding that the data are not to be used for any purpose other than that for which they were originally collected, expressed, or implied concerning accuracy, completeness, reliability, usability or suitability for any particular purpose of the recipient. The user is responsible for the accuracy, completeness, reliability, usability or suitability for any particular purpose of the recipient. These data belong to the Government. Therefore, the recipient may not transfer these data to others without also transferring this Disclaimer. The information depicted on this map represents the results of a survey conducted on the date of the survey. It is not intended to represent the general condition existing at that time.

Distribution Liability: The data represents the results of data collection/processing for a specific US Army Corps of Engineers project. It is only valid for its intended use, context, time and accuracy specifications. The user is responsible for the accuracy, completeness, reliability, usability or suitability for any particular purpose of the recipient. The application of the data for other than its intended purpose is at the user's risk.

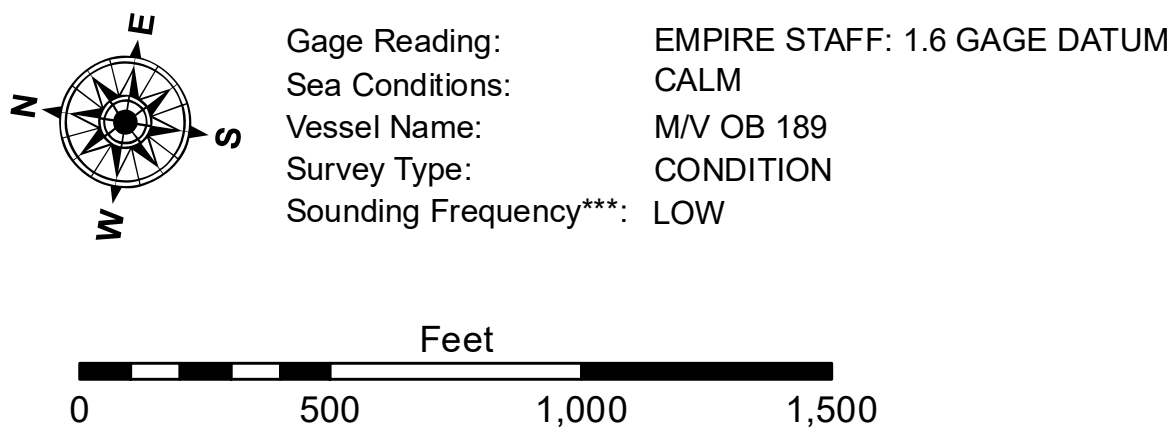
Data Accuracy: Hydrographic survey data is subject to change rapidly due to several factors including but not limited to changing bathymetry, sedimentation, and other factors. The US Army Corps of Engineers does not warrant the accuracy of the data for any particular purpose or condition. The user is responsible for the accuracy, completeness, reliability, usability or suitability for any particular purpose of the recipient. The information depicted on this map represents the results of a survey conducted on the date of the survey. It is not intended to represent the general condition existing at that time.

U.S. ARMY CORPS OF ENGINEERS NEW ORLEANS DISTRICT		
Submitted:	Surveyed By: RYLAND/SONNER	Plotted By: AO
Recommended:	Chief, Survey Section	Checked By: AO
Approved:	Chief, Waterways Maintenance Section	

**EMPIRE WATERWAY
EMPIRE BAY
EM_03_BAY_20200312_CS
12 March 2020**



LEGEND			
--- Federal Navigation Channel	○ Cable Area	□ Borrow Area	
— Federal Navigation Center Line	■ Placement Area	● Shoalest Sounding**	
— As-built Pipeline/Cable	□ Anchorage Area	★ Beacon, General	■ -9' and above
..... Unconfirmed Pipeline/Cable	⊗ Obstruction Point	◆ Red Navigation Buoy	□ -9' and below
— Project Depth Contour	✶ Wrecks-Submerged	◆ Green Navigation Buoy	



NOTES:
Horizontal Coordinate System: North American Datum of 1983 (NAD83), projected to the State Plane Coordinate System (SPCS), Louisiana South Zone. Distance units in U.S. Survey Feet.
Vertical Datum: Soundings are shown in feet and indicate depths below Mean Low Gulf Datum (MLG).
The location of navigation aids are base on and provided by the U.S. Coast Guard.
2015 Aerial Photography data source: NAIP. 1998 DOQQ imagery shown in green from USGS.
Reference is N.O.A.A. Navigation Chart No. 11358 and 11364.
*** Shoalest Sounding per Quarter per Reach.
** High frequency (200 kHz) survey data represents the first signal return at a sounding location and will include suspended solids, known as "fluff", if present. Low frequency (20 kHz) survey data normally penetrates through this "fluff" layer to depict elevations of consolidated bottom material. Low frequency accuracies may vary depending on channel conditions and fathometer settings.

**Sheet Reference Number
3 of 6**

Revision Number:
4.0-20190702