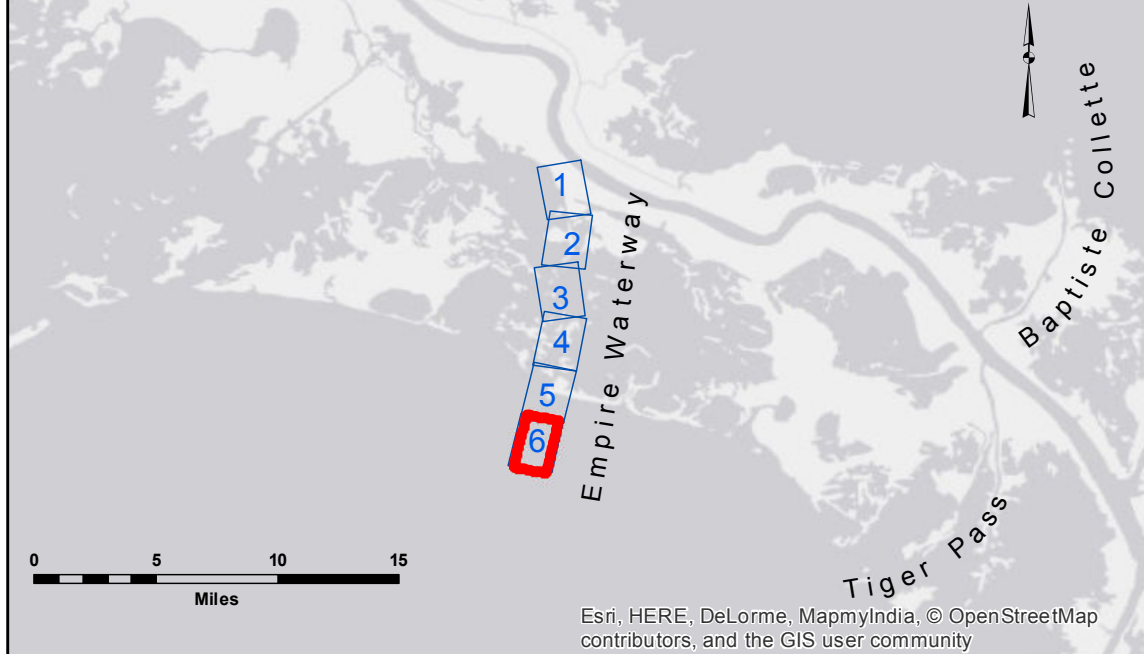


# GULF OF MEXICO

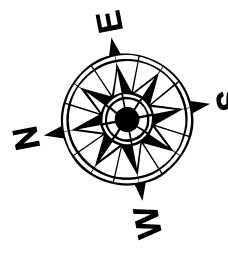
**VICINITY MAP**



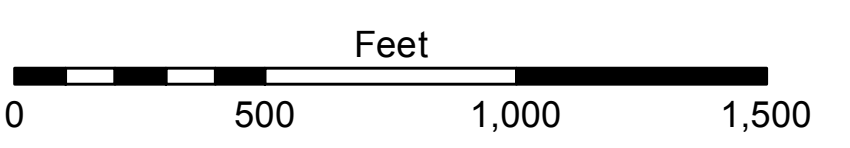
Esri, HERE, DeLorme, MapmyIndia, © OpenStreetMap contributors, and the GIS user community

**LEGEND**

- Federal Navigation Channel
- Federal Navigation Center Line
- As-built Pipeline/Cable
- Unconfirmed Pipeline/Cable
- Project Depth Contour
- Cable Area
- Placement Area
- Anchorage Area
- Obstruction Point
- Wrecks-Submerged
- Borrow Area
- Shoalest Sounding\*\*
- Beacon, General
- Red Navigation Buoy
- Green Navigation Buoy
- 9' and above
- 9' and below



Gage Reading: EMPIRE FG STAFF; 0.5 MLG AVG  
 Sea Conditions: CHOPPY; 2'-3' OUTSIDE  
 Vessel Name: OB-167  
 Survey Type: CONDITION  
 Sounding Frequency\*\*\*: LOW



**NOTES:**

Horizontal Coordinate System:  
 North American Datum of 1983 (NAD83), projected to the State Plane Coordinate System (SPCS), Louisiana South Zone. Distance units in U.S. Survey Feet.

Vertical Datum:  
 Soundings are shown in feet and indicate depths below Mean Low Gulf Datum (MLG).

The location of navigation aids are base on and provided by the U.S. Coast Guard.

2010 Aerial Photography data source: NAIP, 1998 DOQQ imagery shown in green from USGS.

Reference is N.O.A. Navigation Chart No. 11358 and 11364.

\*\*\* Shoalest Sounding per Quarter per Reach.

\*\*\* High frequency (200 kHz) survey data represents the first signal return at a sounding location and will include suspended solids, known as "fluff", if present. Low frequency (20 kHz) survey data normally penetrates through this "fluff" layer to depict elevations of consolidated bottom material. Low frequency accuracies may vary depending on channel conditions and fathometer settings.



**DISCLAIMER**  
 These data and the recipient accepts and uses them with the express understanding that the information is provided for informational purposes only and is not intended for use in any other manner. The user is responsible for the accuracy, completeness, reliability, usability or suitability for any particular purpose of the information. These data are provided as a service to the user and are not intended to be used in any manner other than that intended by the U.S. Army Corps of Engineers. The information depicted on this map represents the results of a survey conducted in accordance with the standards and specifications of the U.S. Army Corps of Engineers. The information is provided as a service to the user and is not intended to be used in any manner other than that intended by the U.S. Army Corps of Engineers. The information is provided as a service to the user and is not intended to be used in any manner other than that intended by the U.S. Army Corps of Engineers. The information is provided as a service to the user and is not intended to be used in any manner other than that intended by the U.S. Army Corps of Engineers.

U.S. ARMY CORPS OF ENGINEERS NEW ORLEANS DISTRICT	
Submitted:	Surveyed By: SPPM
Recommended: Chief Survey Section	Plotted By: AIO
Approved: Chief Waterways Maintenance Section	Checked By: JIB

**EMPIRE WATERWAY  
 EMPIRE BAR  
 EM\_06\_BAR\_20150226  
 26 February 2015**

**Sheet  
 Reference  
 Number  
 6 of 6**