

Access to Data: The United States Government provides these data and the recipient accepts and uses them with the express understanding that the data are not to be used for any purpose other than that for which they were originally collected, and that the data are not to be used for any purpose other than that for which they were originally collected.

Distribution Liability: The data represent the results of data collection/processing for a specific US Army Corps of Engineers project. The user is responsible for the accuracy, completeness, and timeliness of the data for their intended use. The user is responsible for the accuracy, completeness, and timeliness of the data for their intended use.

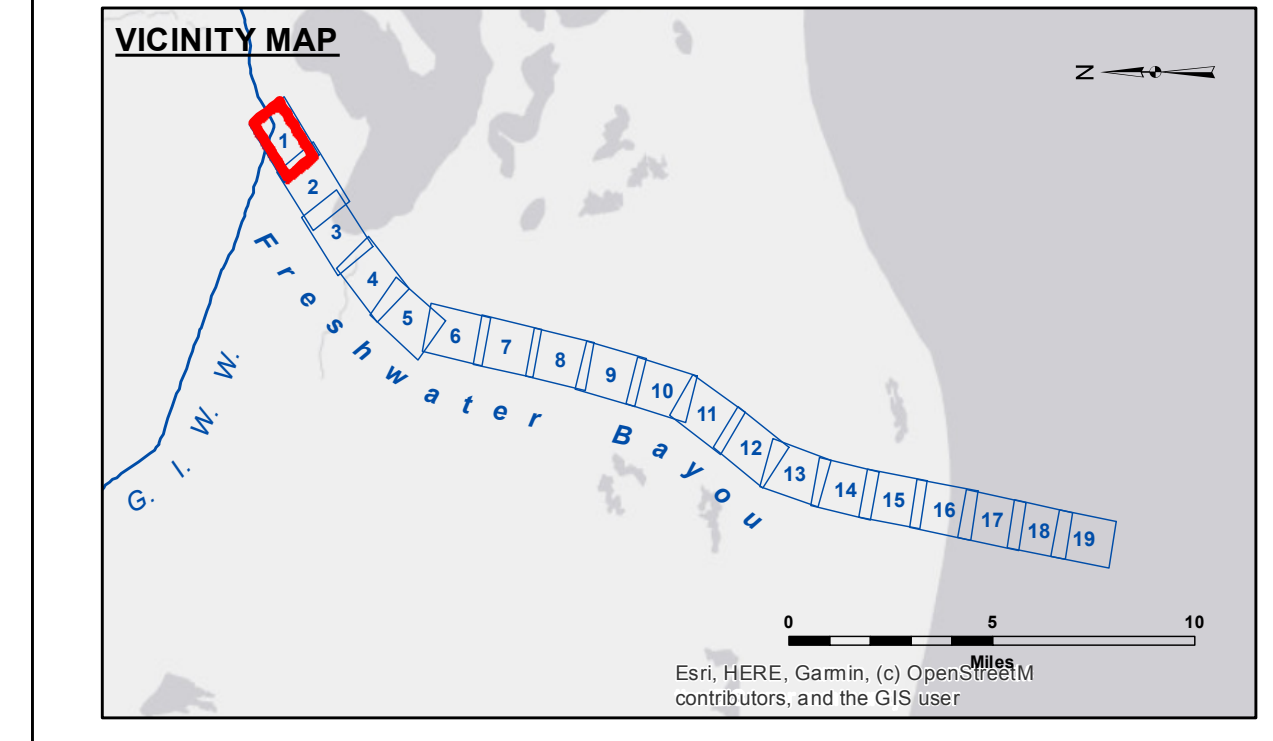
Data Constraints: Hydrographic survey data is subject to change rapidly due to several factors including, but not limited to, changing hydrographical conditions which develop after the date of the survey. The user is responsible for the accuracy, completeness, and timeliness of the data for their intended use.

U.S. ARMY CORPS OF ENGINEERS NEW ORLEANS DISTRICT	
Submitted:	RYLAND/SIMMONS
Recommended:	Chief, Survey Section
Approved:	Chief, Waterways Maintenance Section
Printed By:	BD
Checked By:	AC

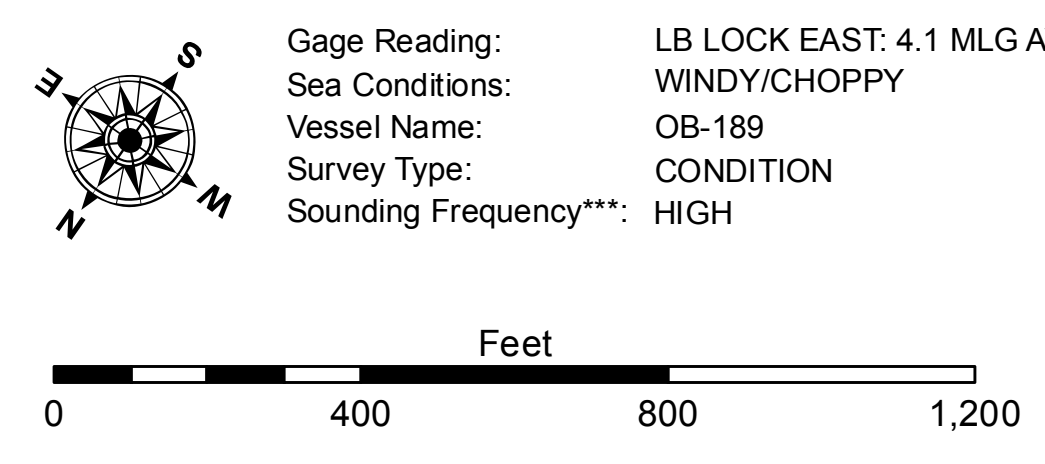
**FRESHWATER BAYOU
UPPER CHANNEL
FB_01_UPR_20210413_CS
13 April 2021**

**Sheet
Reference
Number
1 of 19**

Revision Number:
4.1-20191105



LEGEND			
--- Federal Navigation Channel	○ Cable Area	□ Borrow Area	■ -12' and above
— Federal Navigation Center Line	□ Placement Area	● Shoalest Sounding**	□ -12' and below
— As-built Pipeline/Cable	□ Anchorage Area	★ Beacon, General	
..... Unconfirmed Pipeline/Cable	⊗ Obstruction Point	◆ Red Navigation Buoy	
— Project Depth Contour	⚓ Wrecks-Submerged	◆ Green Navigation Buoy	



NOTES:
Horizontal Coordinate System: North American Datum of 1983 (NAD83), projected to the State Plane Coordinate System (SPCS), Louisiana South Zone. Distance units in U.S. Survey Feet.
Vertical Datum: Soundings are shown in feet and indicate depths below Mean Low Gulf Datum (MLG). Datum Relationships for gage 76592 / 76593 as of August 2011: 0.0' NAVD83 (2006.81) = 0.9' MLLW = 1.9' MLG or 0.0' MLLW = 1.0' MLG
Distances on the Freshwater Bayou are shown at 1 mile intervals.
The location of navigation aids are base on and provided by the U.S. Coast Guard and USACE survey crews.
2017 Aerial Photography data source: NAIP
Reference is N.O.A.A. Navigation Chart No. 11350.
** Shoalest Sounding per Quarter per Reach.
*** High frequency (200 kHz) survey data represents the first signal return at a sounding location and will include suspended solids, known as "fluff", if present. Low frequency (20 kHz) survey data normally penetrates through this "fluff" layer to depict elevations of consolidated bottom material. Low frequency accuracies may vary depending on channel conditions and fathometer settings.