

ACCESS LIMITS
 These data and the recipient accepts and uses them with the express understanding that the data is for informational purposes only and is not to be used for any other purpose. The user is responsible for the results and accuracy of any application of the data for other than its intended purpose. The user is responsible for the results and accuracy of any application of the data for other than its intended purpose.
Distribution Liability: The data represents the results of data collection/processing for a specific US Army Corps of Engineers project and is only valid for its intended use, control, time and accuracy specifications. The user is responsible for the results and accuracy of any application of the data for other than its intended purpose.
Data Constraints: Hydrographic survey data is subject to change rapidly due to several factors including but not limited to dredging, sedimentation, and channel migration. The user is responsible for the results and accuracy of any application of the data for other than its intended purpose. The user is responsible for the results and accuracy of any application of the data for other than its intended purpose.
 The information depicted on this map represents the results of a survey and is not to be used for any other purpose. The user is responsible for the results and accuracy of any application of the data for other than its intended purpose. The user is responsible for the results and accuracy of any application of the data for other than its intended purpose.

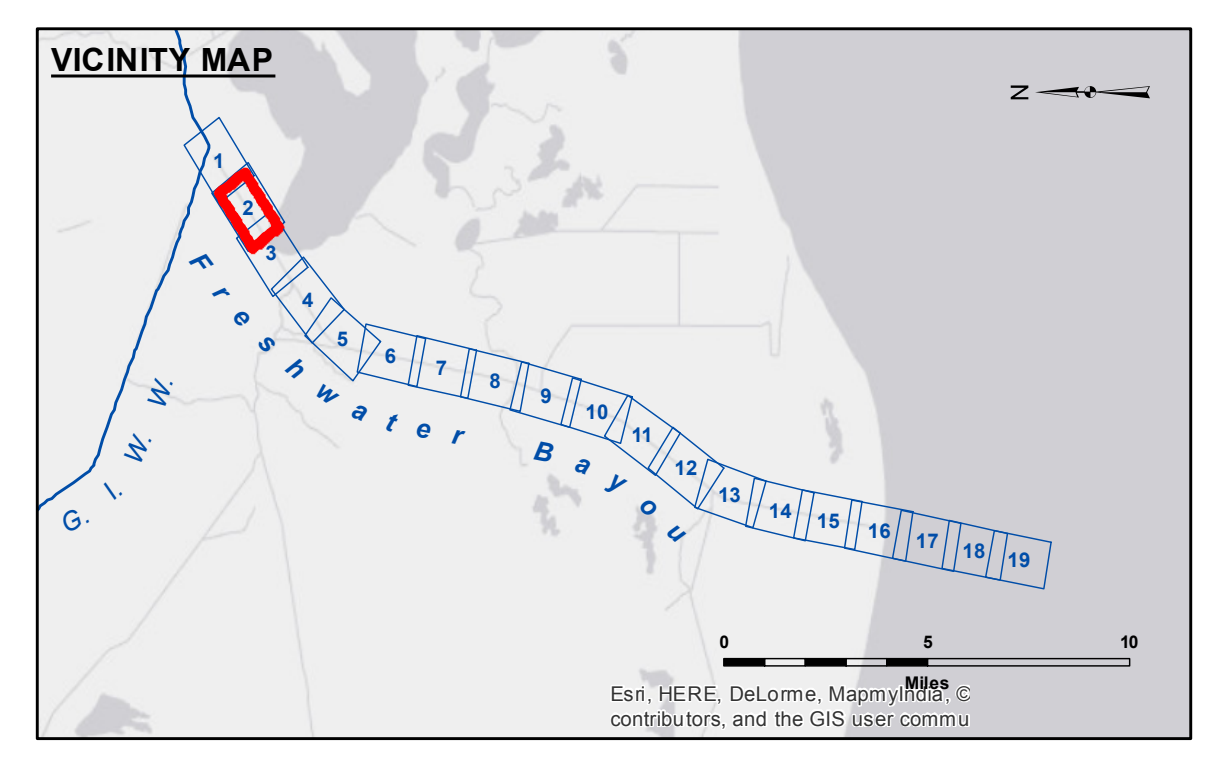
Submitted:	Surveyed By: SP/PM
Recommended: Chief, Survey Section	Plotted By: BD
Approved: Chief, Waterways Maintenance Section	Checked By: AC

U.S. ARMY CORPS OF ENGINEERS
 NEW ORLEANS DISTRICT

**FRESHWATER BAYOU
 UPPER CHANNEL
 FB_02_UPR_20161019
 19 October 2016**

**Sheet
 Reference
 Number
 2 of 19**

Revision Number:
 3.8.9-20150202



LEGEND

--- Federal Navigation Channel	○ Cable Area	□ Borrow Area	■ -12' and above
— Federal Navigation Center Line	□ Placement Area	● Shoalest Sounding**	□ -12' and below
— As-built Pipeline/Cable	□ Anchorage Area	★ Beacon, General	
..... Unconfirmed Pipeline/Cable	⊗ Obstruction Point	◆ Red Navigation Buoy	
— Project Depth Contour	⚓ Wrecks-Submerged	◆ Green Navigation Buoy	

Gage Reading: LBL-E: 3.31 MLG
 Sea Conditions: CALM
 Vessel Name: OB-167
 Survey Type: CONDITION
 Sounding Frequency***: LOW

Feet
 0 400 800 1,200

NOTES:
 Horizontal Coordinate System: North American Datum of 1983 (NAD83), projected to the State Plane Coordinate System (SPCS), Louisiana South Zone. Distance units in U.S. Survey Feet.
 Vertical Datum: Soundings are shown in feet and indicate depths below Mean Low Gulf Datum (MLG). Datum Relationships for gage 76592 / 76593 as of August 2011: 0.0' NAVD83 (2006.81) = 0.9' MLLW = 1.9' MLG or 0.0' MLLW = 1.0' MLG
 Distances on the Freshwater Bayou are shown at 1 mile intervals.
 The location of navigation aids are base on and provided by the U.S. Coast Guard and USACE survey crews.
 2010 Aerial Photography data source: NAIP
 Reference is N.O.A. Navigation Chart No. 11350.
 ** Shoalest Sounding per Quarter per Reach.
 *** High frequency (200 kHz) survey data represents the first signal return at a sounding location and will include suspended solids, known as "fluff", if present. Low frequency (20 kHz) survey data normally penetrates through this "fluff" layer to depict elevations of consolidated bottom material. Low frequency accuracies may vary depending on channel conditions and fathometer settings.