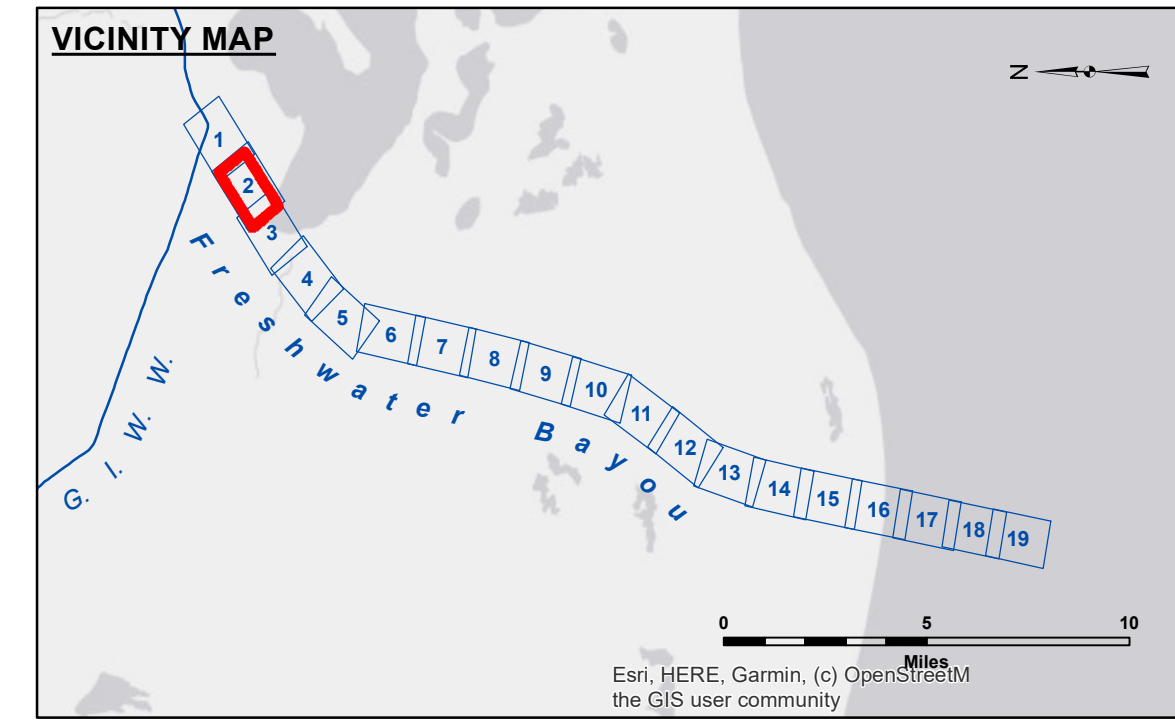


**Distribution Liability:** The data represents the results of data collection/processing for a specific US Army Corps of Engineers project. It is only valid for its intended use, content, time and accuracy specifications. The user is responsible for the results. Application of the data for other than its intended purpose. Data Constraints: Hydrographic survey data is subject to change rapidly due to several factors including but not limited to dredging operations, channel migration, and other factors. The user is responsible for the hydrographical conditions which develop after the date of the survey. The information depicted on the map represents the results of a survey conducted at the time the data was collected. It is not considered to represent the general condition existing at that time.

Submitted:	Surveyed By:
Recommended:	Plotted By:
Approved:	Checked By:



**LEGEND**

--- Federal Navigation Channel	○ Cable Area	□ Borrow Area	■ -12' and above
— Federal Navigation Center Line	□ Placement Area	● Shoalest Sounding**	□ -12' and below
— As-built Pipeline/Cable	□ Anchorage Area	★ Beacon, General	
..... Unconfirmed Pipeline/Cable	⊗ Obstruction Point	◆ Red Navigation Buoy	
— Project Depth Contour	⚓ Wrecks-Submerged	◆ Green Navigation Buoy	

Gage Reading: FRESHWATER N: 3.2 MLG AVG  
 Sea Conditions: CALM  
 Vessel Name: OB169  
 Survey Type: CONDITION  
 Sounding Frequency\*\*\*: HIGH

**NOTES:**  
 Horizontal Coordinate System: North American Datum of 1983 (NAD83), projected to the State Plane Coordinate System (SPCS), Louisiana South Zone. Distance units in U.S. Survey Feet.  
 Vertical Datum: Soundings are shown in feet and indicate depths below Mean Low Gulf Datum (MLG). Datum Relationships for gage 76592 / 76593 as of August 2011: 0.0' NAVD83 (2006.81) = 0.9' MLLW = 1.9' MLG or 0.0' MLLW = 1.0' MLG  
 Distances on the Freshwater Bayou are shown at 1 mile intervals.  
 The location of navigation aids are base on and provided by the U.S. Coast Guard and USACE survey crews.  
 2017 Aerial Photography data source: NAIP  
 Reference is N.O.A.A. Navigation Chart No. 11350.  
 \*\* Shoalest Sounding per Quarter per Reach.  
 \*\*\* High frequency (200 kHz) survey data represents the first signal return at a sounding location and will include suspended solids, known as "fluff", if present. Low frequency (20 kHz) survey data normally penetrates through this "fluff" layer to depict elevations of consolidated bottom material. Low frequency accuracies may vary depending on channel conditions and fathometer settings.

**FRESHWATER BAYOU UPPER CHANNEL**  
**FB\_02\_UPR\_20240918\_CS\_5X5\_POSTSTORM**  
**18 September 2024**

**Sheet Reference Number**  
**2 of 19**