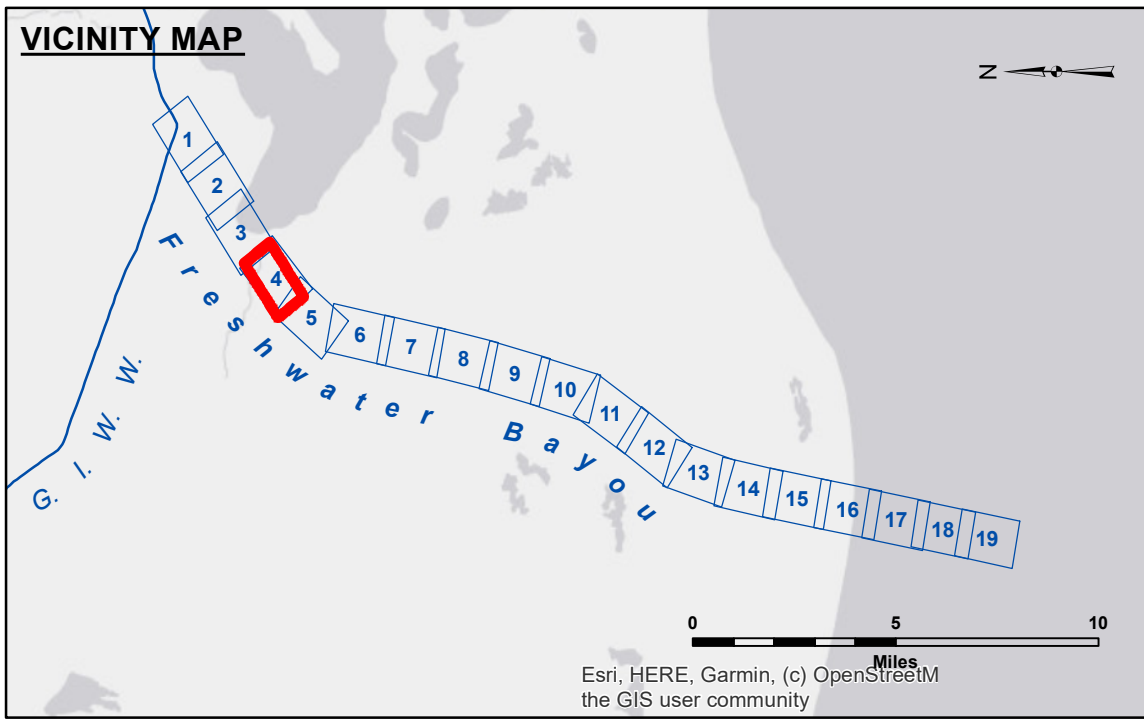


**Access/Availability:** The United States Government furnishes these data and the recipient accepts and uses them with the express understanding that they are not to be used for any purpose other than that specified. The user is responsible for the accuracy, completeness, reliability, usability or suitability for any particular purpose of the information. The user agrees to indemnify the United States Government from any liability whatsoever to any person by reason of any use of these data. The recipient agrees to indemnify the United States Government from any liability whatsoever to any person by reason of any use of these data. The recipient may not transfer these data to others without obtaining the permission of the United States Government. The recipient may not transfer these data to others without obtaining the permission of the United States Government. The recipient may not transfer these data to others without obtaining the permission of the United States Government. The recipient may not transfer these data to others without obtaining the permission of the United States Government.

Submitted:	Surveyed By:	J.S. SP
Recommended:	Plotted By:	J.H.
Approved:	Checked By:	J.H.

U.S. ARMY CORPS OF ENGINEERS  
NEW ORLEANS DISTRICT

**FRESHWATER BAYOU  
UPPER CHANNEL**  
FB\_04\_UPR\_20240918\_CS\_5X5\_POSTSTORM  
18 September 2024



**LEGEND**

--- Federal Navigation Channel	○ Cable Area	□ Borrow Area	■ -12' and above
— Federal Navigation Center Line	■ Placement Area	● Shoalest Sounding**	□ -12' and below
— As-built Pipeline/Cable	⊗ Anchorage Area	★ Beacon, General	
..... Unconfirmed Pipeline/Cable	⊗ Obstruction Point	◆ Red Navigation Buoy	
— Project Depth Contour	⚓ Wrecks-Submerged	◆ Green Navigation Buoy	

Gage Reading: FRESHWATER N: 3.2 MLG AVG  
 Sea Conditions: CALM  
 Vessel Name: OB169  
 Survey Type: CONDITION  
 Sounding Frequency\*\*\*: HIGH

0 400 800 1,200  
Feet

**NOTES:**  
 Horizontal Coordinate System: North American Datum of 1983 (NAD83), projected to the State Plane Coordinate System (SPCS), Louisiana South Zone. Distance units in U.S. Survey Feet.  
 Vertical Datum: Soundings are shown in feet and indicate depths below Mean Low Gulf Datum (MLG). Datum Relationships for gage 76592 / 76593 as of August 2011: 0.0' NAVD83 (2006.81) = 0.9' MLLW = 1.9' MLG or 0.0' MLLW = 1.0' MLG  
 Distances on the Freshwater Bayou are shown at 1 mile intervals.  
 The location of navigation aids are base on and provided by the U.S. Coast Guard and USACE survey crews.  
 2017 Aerial Photography data source: NAIP  
 Reference is N.O.A. Navigation Chart No. 11350.  
 \*\* Shoalest Sounding per Quarter per Reach.  
 \*\*\* High frequency (200 kHz) survey data represents the first signal return at a sounding location and will include suspended solids, known as "fluff", if present. Low frequency (20 kHz) survey data normally penetrates through this "fluff" layer to depict elevations of consolidated bottom material. Low frequency accuracies may vary depending on channel conditions and fathometer settings.

Sheet Reference Number  
4 of 19  
Revision Number:  
4.2-20240918