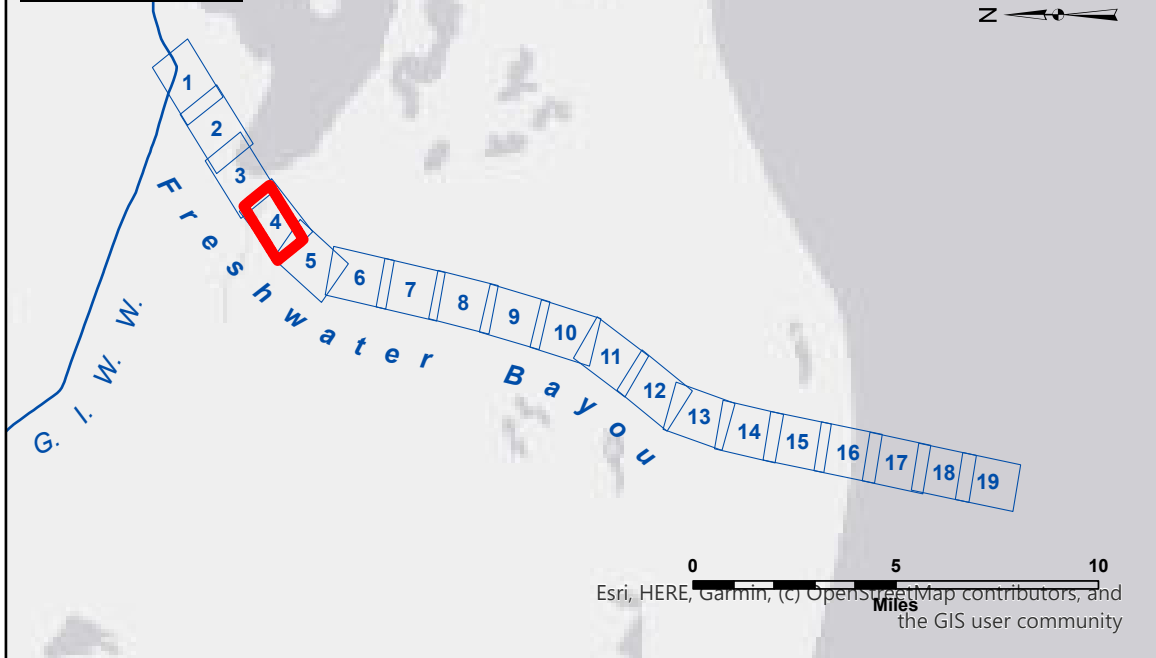


VICINITY MAP



LEGEND

--- Federal Navigation Channel

— Federal Navigation Center Line

— As-built Pipeline/Cable

..... Unconfirmed Pipeline/Cable

— Project Depth Contour

○ Cable Area

□ Placement Area

□ Anchorage Area

⊗ Obstruction Point

✈ Wrecks-Submerged

□ Borrow Area

● Shoalest Sounding**

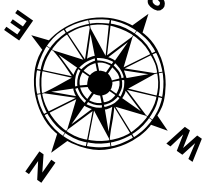
★ Beacon, General

◆ Red Navigation Buoy

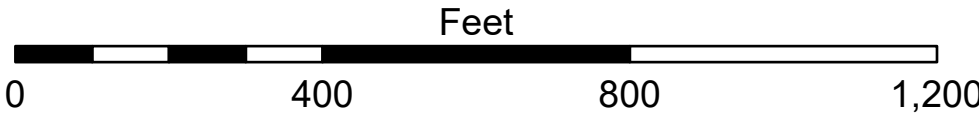
◆ Green Navigation Buoy

■ -12' and above

□ -12' and below



Gage Reading: LBL WESTGAGE VRN: 3.41 MLG AVG
Sea Conditions: CHOPPY
Vessel Name: OB-189
Survey Type: CONDITION
Sounding Frequency***: HIGH



NOTES:
Horizontal Coordinate System:
North American Datum of 1983 (NAD83), projected to the State Plane
Coordinate System (SPCS), Louisiana South Zone. Distance units in U.S. Survey Feet.
Vertical Datum:
Soundings are shown in feet and indicate depths below Mean Low Gulf Datum (MLG).
Datum Relationships for gage 76592 / 76593 as of August 2011:
0.0' NAVD88 (2006.81) = 0.9' MLLW = 1.9' MLG or 0.0' MLLW = 1.0' MLG
Distances on the Freshwater Bayou are shown at 1 mile intervals.
The location of navigation aids are base on and provided by the U.S. Coast Guard
and USACE survey crews.
2021 Aerial Photography data source: NAIP (1998 DOQQ imagery in green)
Reference is N.O.A.A. Navigation Chart No. 11350.
** Shoalest Sounding per Quarter per Reach.
*** High frequency (200 kHz) survey data represents the first signal return at a sounding
location and will include suspended solids, known as "fluff", if present. Low frequency (20 kHz)
survey data normally penetrates through this "fluff" layer to depict elevations of consolidated bottom
material. Low frequency accuracies may vary depending on channel conditions and fathometer
settings.

U.S. ARMY CORPS OF ENGINEERS NEW ORLEANS DISTRICT	
Submitted: _____	Surveyed By: SP-JS
Recommended: Chief, Survey Section	Plotted By: BD
Approved: Chief, Waterways Maintenance Section	Checked By: AO/JH

FRESHWATER BAYOU
UPPER CHANNEL
FB_04_UPR_20250603_CS
03 June 2025

Sheet
Reference
Number
4 of 19