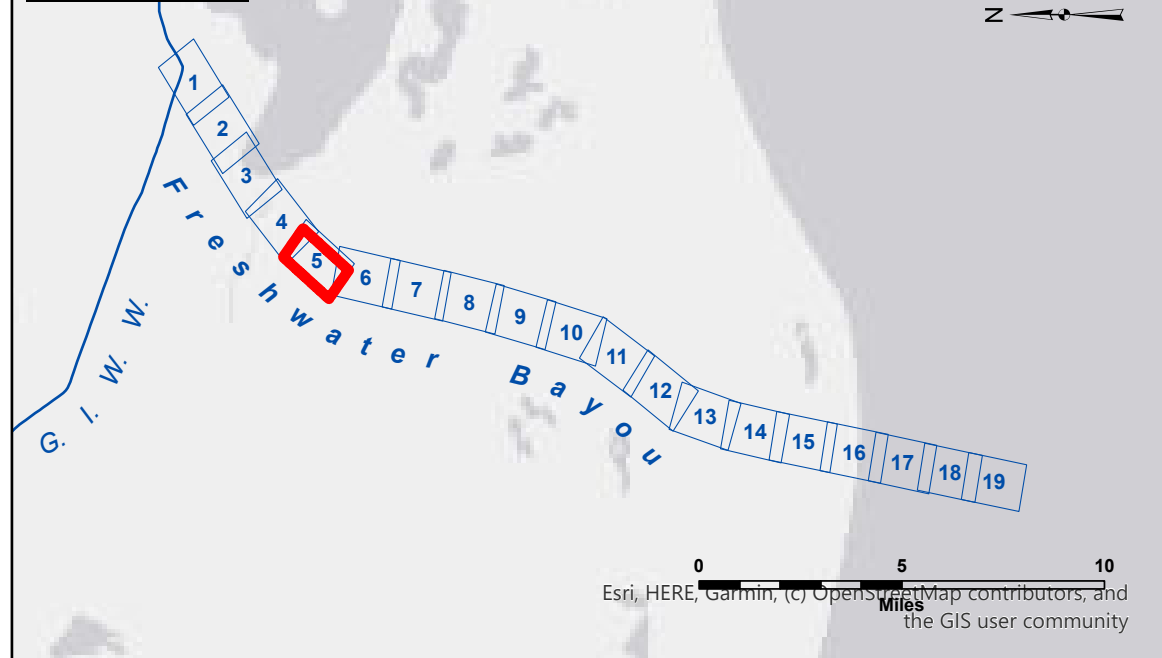
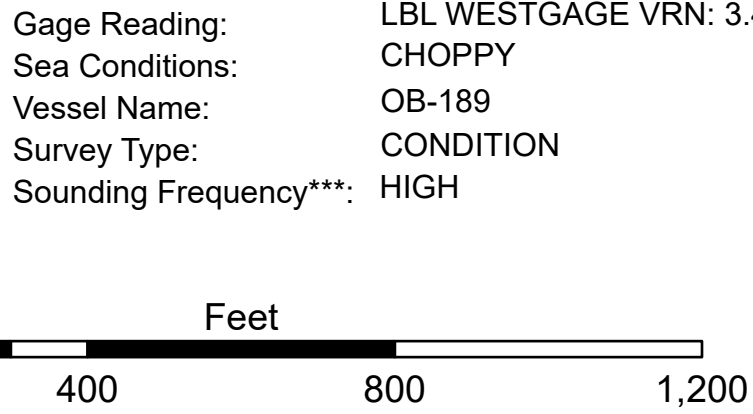
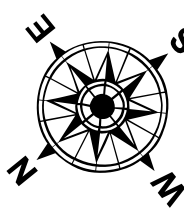


VICINITY MAP



LEGEND			
--- Federal Navigation Channel	○ Cable Area	□ Borrow Area	■ -12' and above
— Federal Navigation Center Line	□ Placement Area	● Shoalest Sounding**	□ -12' and below
— As-built Pipeline/Cable	□ Anchorage Area	★ Beacon, General	
..... Unconfirmed Pipeline/Cable	⊗ Obstruction Point	◆ Red Navigation Buoy	
— Project Depth Contour	✈ Wrecks-Submerged	◆ Green Navigation Buoy	



NOTES:

Horizontal Coordinate System:
North American Datum of 1983 (NAD83), projected to the State Plane
Coordinate System (SPCS), Louisiana South Zone. Distance units in U.S. Survey Feet.

Vertical Datum:
Soundings are shown in feet and indicate depths below Mean Low Gulf Datum (MLG).
Datum Relationships for gage 76592 / 76593 as of August 2011:
0.0' NAVD88 (2006.81) = 0.9' MLLW = 1.9' MLG or 0.0' MLLW = 1.0' MLG

Distances on the Freshwater Bayou are shown at 1 mile intervals.

The location of navigation aids are base on and provided by the U.S. Coast Guard and USACE survey crews.

2021 Aerial Photography data source: NAIP (1998 DOQQ imagery in green)

Reference is N.O.A.A. Navigation Chart No. 11350.

** Shoalest Sounding per Quarter per Reach.

*** High frequency (200 kHz) survey data represents the first signal return at a sounding location and will include suspended solids, known as "fluff", if present. Low frequency (20 kHz) survey data normally penetrates through this "fluff" layer to depict elevations of consolidated bottom material. Low frequency accuracies may vary depending on channel conditions and fathometer settings.



DISCLAIMER: The United States Government furnishes these data and the recipient accepts and uses them with the express understanding that the data are not to be used for any purpose other than that for which they were originally collected. The user is responsible for the results of any application of the data for other than its intended purpose.

WARRANTY: The data represents the results of data collection/processing for a specific US Army Corps of Engineers activity and indicates the general existing conditions. As such, the data is not to be used for any purpose other than that for which they were originally collected. The user is responsible for the results of any application of the data for other than its intended purpose.

PRECEDENCE: Hydrographic data is subject to change rapidly due to several factors including but not limited to dredging activity and natural shoaling and scouring processes. The U.S. Army Corps of Engineers does not warrant the accuracy of the data in the hydrographical conditions which develop after the date of publication. This data is intended for U.S. Army Corps of Engineers internal use. Prudent maintenance should not rely solely upon it.

U.S. ARMY CORPS OF ENGINEERS NEW ORLEANS DISTRICT			
Submitted:	Surveyed By: SPJS	Plotted By: BD	Checked By: AOJH
Recommended:	Chief, Survey Section	Chief, Waterways Maintenance Section	
Approved:			

**FRESHWATER BAYOU
UPPER CHANNEL
FB_05_UPR_20250603_CS
03 June 2025**

**Sheet
Reference
Number
5 of 19**

Revision Number:
5.25.04.03-5.25.04.03