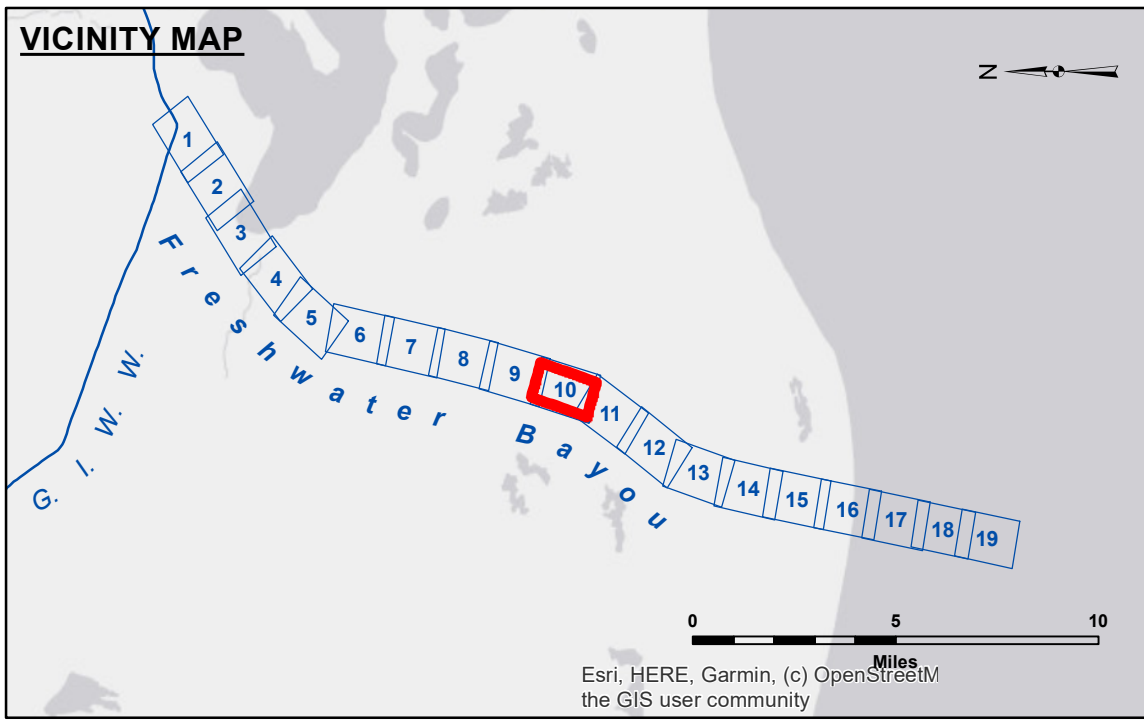


DISCLAIMER
 Access, Contaminants, The United States Government furnishes these data and the recipient accepts and uses them with the express understanding that the data are not intended for any purpose other than that for which they were collected, and that the data are not to be used for any purpose other than that for which they were collected. The user is responsible for the results of any use of the data for other than the intended purpose.
 Data Constants: Hydrographic survey data is subject to change rapidly due to several factors including, but not limited to, dredging operations, changes in channel conditions, and changes in the hydrographical conditions which develop after the date of the survey. The Corps of Engineers accepts no responsibility for changes in the hydrographical conditions which develop after the date of the survey. Prudent mariners should not rely solely upon this information.

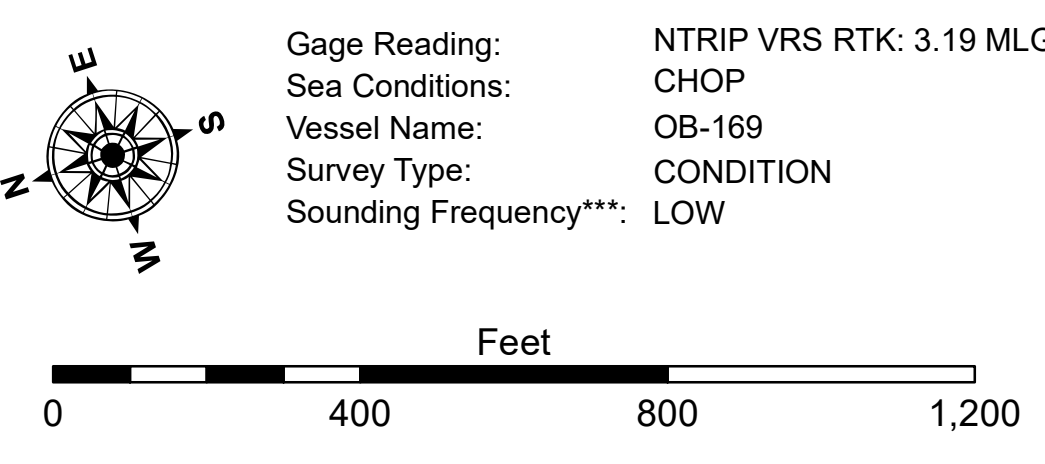
Submitted:	Surveyed By: SP,SR
Recommended: Chart, Survey Section	Plotted By: JH
Approved: Chart, Waterways Maintenance Section	Checked By: JH

**FRESHWATER BAYOU
 LOWER CHANNEL
 FB_10_LWR_20230222_CS
 22 February 2023**



LEGEND

--- Federal Navigation Channel	○ Cable Area	□ Borrow Area	■ -12' and above
— Federal Navigation Center Line	□ Placement Area	● Shoalest Sounding**	□ -12' and below
— As-built Pipeline/Cable	□ Anchorage Area	★ Beacon, General	
..... Unconfirmed Pipeline/Cable	⊗ Obstruction Point	◆ Red Navigation Buoy	
— Project Depth Contour	✈ Wrecks-Submerged	◆ Green Navigation Buoy	



NOTES:
 Horizontal Coordinate System: North American Datum of 1983 (NAD83), projected to the State Plane Coordinate System (SPCS), Louisiana South Zone. Distance units in U.S. Survey Feet.
 Vertical Datum: Soundings are shown in feet and indicate depths below Mean Low Gulf Datum (MLG). Datum Relationships for gage 76592 / 76593 as of August 2011: 0.0' NAVD83 (2006.81) = 0.9' MLLW = 1.9' MLG or 0.0' MLLW = 1.0' MLG
 Distances on the Freshwater Bayou are shown at 1 mile intervals.
 The location of navigation aids are base on and provided by the U.S. Coast Guard and USACE survey crews.
 2017 Aerial Photography data source: NAIP
 Reference is N.O.A. Navigation Chart No. 11350.
 ** Shoalest Sounding per Quarter per Reach.
 *** High frequency (200 kHz) survey data represents the first signal return at a sounding location and will include suspended solids, known as "fluff", if present. Low frequency (20 kHz) survey data normally penetrates through this "fluff" layer to depict elevations of consolidated bottom material. Low frequency accuracies may vary depending on channel conditions and fathometer settings.

**Sheet Reference Number
 10 of 19**