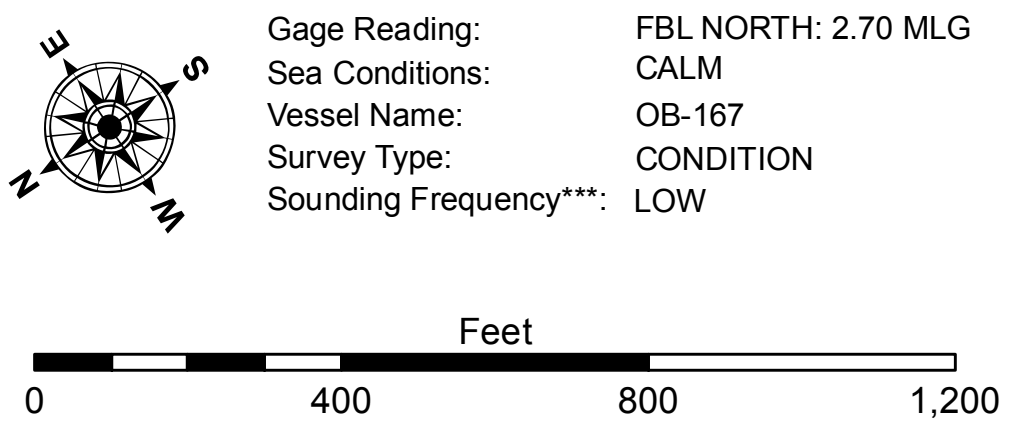


LEGEND			
Federal Navigation Channel	Cable Area	Borrow Area	-12' and above
Federal Navigation Center Line	Placement Area	Shoalest Sounding**	-12' and below
As-built Pipeline/Cable	Anchorage Area	Beacon, General	
Unconfirmed Pipeline/Cable	Obstruction Point	Red Navigation Buoy	
Project Depth Contour	Wrecks-Submerged	Green Navigation Buoy	



**NOTES:**  
 Horizontal Coordinate System: North American Datum of 1983 (NAD83), projected to the State Plane Coordinate System (SPCS), Louisiana South Zone. Distance units in U.S. Survey Feet.  
 Vertical Datum: Soundings are shown in feet and indicate depths below Mean Low Gulf Datum (MLG). Datum Relationships for gage 76592 / 76593 as of August 2011: 0.0' NAVD83 (2006.81) = 0.9' MLLW = 1.9' MLG or 0.0' MLLW = 1.0' MLG  
 Distances on the Freshwater Bayou are shown at 1 mile intervals.  
 The location of navigation aids are base on and provided by the U.S. Coast Guard and USACE survey crews.  
 2010 Aerial Photography data source: NAIP  
 Reference is N.O.A. Navigation Chart No. 11350.  
 \*\* Shoalest Sounding per Quarter per Reach.  
 \*\*\* High frequency (200 kHz) survey data represents the first signal return at a sounding location and will include suspended solids, known as "fluff", if present. Low frequency (20 kHz) survey data normally penetrates through this "fluff" layer to depict elevations of consolidated bottom material. Low frequency accuracies may vary depending on channel conditions and fathometer settings.



**DISCLAIMER**  
 Access Constraints: The United States Government furnishes these data and the recipient accepts and uses them with the express understanding that the data are not to be used for any purpose other than that for which they were provided. The user is responsible for the results of any application of the data for other than its intended purpose.  
 Data Constraints: Hydrographic survey data is subject to change rapidly due to several factors including but not limited to dredging operations, channel migration, and changes in bathymetry. The Army Corps of Engineers accepts no responsibility for changes in the hydrographic conditions when developed after the date of the survey. Product maintainers should not rely solely upon it.  
 Distribution Liability: The data represent the results of data collection sponsored by a specific US Army Corps of Engineers District. The data are not to be used for any purpose other than that for which they were provided. The user is responsible for the results of any application of the data for other than its intended purpose.

U.S. ARMY CORPERS OF ENGINEERS NEW ORLEANS DISTRICT		
Submitted:	Surveyed By: SPPM	Plotted By: BTD
Revised:	Checked By: AC	Approved:
Chief, Waterways Maintenance Section		

**FRESHWATER BAYOU  
 LOWER CHANNEL  
 FB\_11\_LWR\_20161020  
 20 October 2016**

**Sheet Reference Number  
 11 of 19**