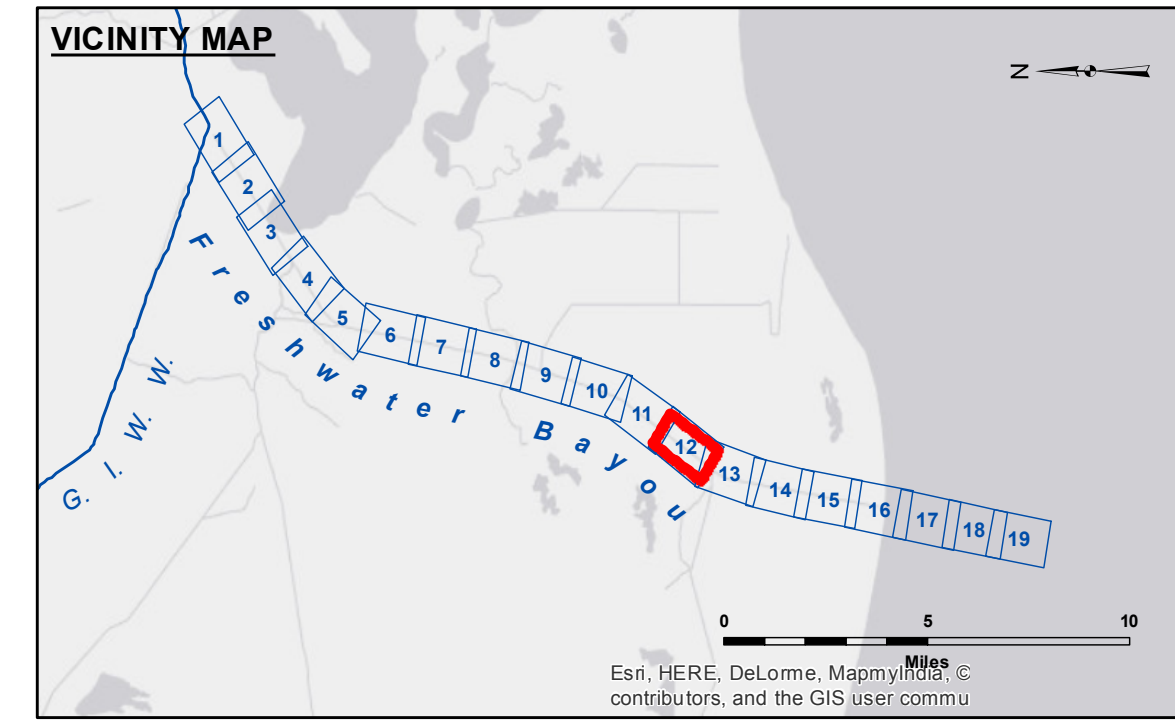


DISCLAIMER
 The information depicted on this map represents the results of a survey conducted by the United States Army Corps of Engineers and is not intended to be used for any purpose other than that for which it was prepared. The user is responsible for the accuracy, completeness, reliability, usability, or availability for any particular purpose of the information. The user is responsible for the accuracy, completeness, reliability, usability, or availability for any particular purpose of the information. The user is responsible for the accuracy, completeness, reliability, usability, or availability for any particular purpose of the information. The user is responsible for the accuracy, completeness, reliability, usability, or availability for any particular purpose of the information.

U.S. ARMY CORPS OF ENGINEERS NEW ORLEANS DISTRICT	
Submitted:	Surveyed By: SPPM
Recommended:	Plotted By: BTD
Approved:	Checked By: AC
Chief, Waterways Maintenance Section	

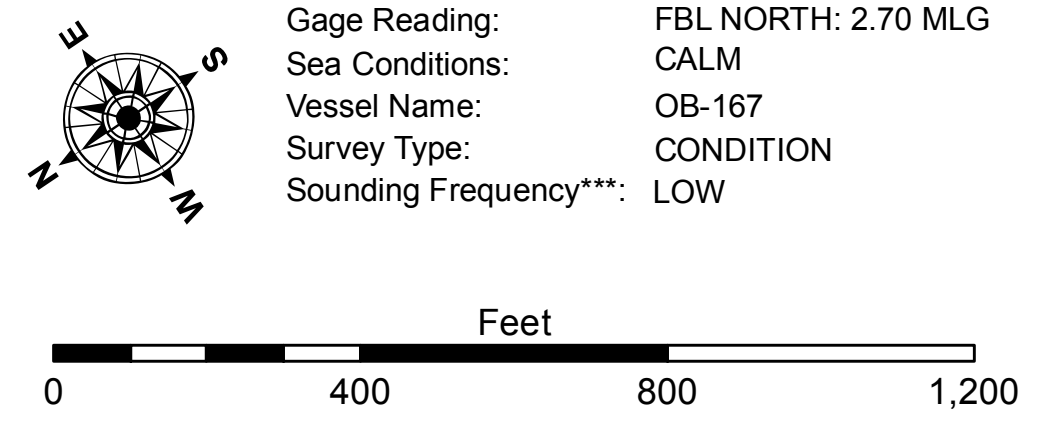
**FRESHWATER BAYOU
 LOWER CHANNEL
 FB_12_LWR_20161020
 20 October 2016**

**Sheet Reference Number
 12 of 19**



LEGEND

Federal Navigation Channel	Cable Area	Borrow Area	-12' and above
Federal Navigation Center Line	Placement Area	Shoalest Sounding**	-12' and below
As-built Pipeline/Cable	Anchorage Area	Beacon, General	
Unconfirmed Pipeline/Cable	Obstruction Point	Red Navigation Buoy	
Project Depth Contour	Wrecks-Submerged	Green Navigation Buoy	



NOTES:
 Horizontal Coordinate System:
 North American Datum of 1983 (NAD83), projected to the State Plane Coordinate System (SPCS), Louisiana South Zone. Distance units in U.S. Survey Feet.
 Vertical Datum:
 Soundings are shown in feet and indicate depths below Mean Low Gulf Datum (MLG). Datum Relationships for gage 76592 / 76593 as of August 2011:
 0.0' NAVD83 (2006.81) = 0.9' MLLW = 1.9' MLG or 0.0' MLLW = 1.0' MLG
 Distances on the Freshwater Bayou are shown at 1 mile intervals.
 The location of navigation aids are base on and provided by the U.S. Coast Guard and USACE survey crews.
 2010 Aerial Photography data source: NAIP
 Reference is N.O.A. Navigation Chart No. 11350.
 ** Shoalest Sounding per Quarter per Reach.
 *** High frequency (200 kHz) survey data represents the first signal return at a sounding location and will include suspended solids, known as "fluff", if present. Low frequency (20 kHz) survey data normally penetrates through this "fluff" layer to depict elevations of consolidated bottom material. Low frequency accuracies may vary depending on channel conditions and fathometer settings.