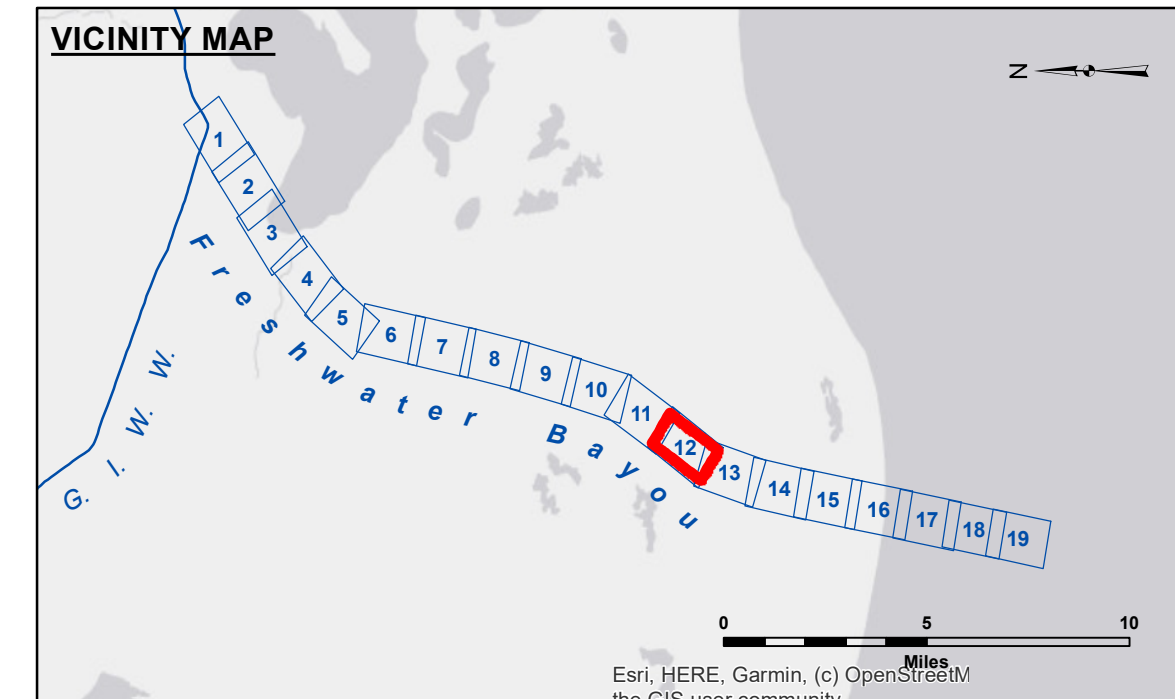
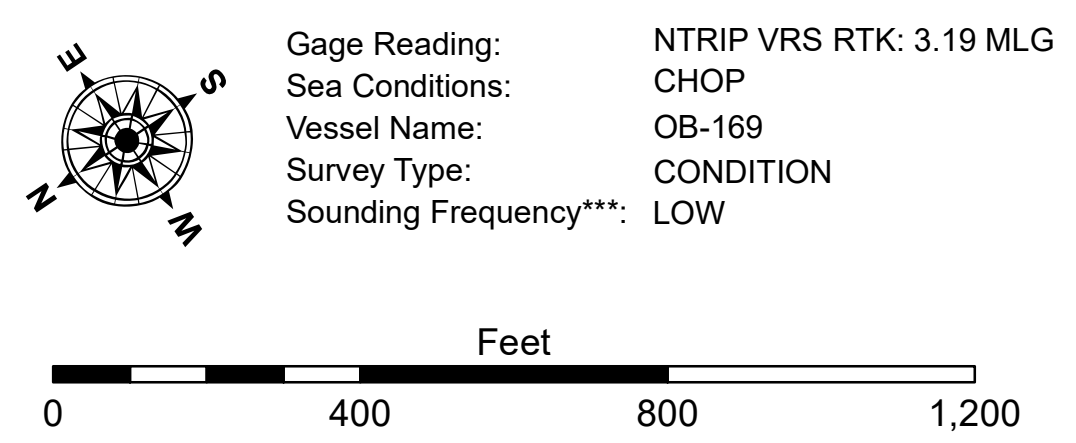


**DISCLAIMER**  
 These data and the recipient accepts and uses them with the express understanding that the data represents the results of data collection/processing for a specific US Army Corps of Engineers project. The data is not intended for use in any other project. The user is responsible for the accuracy, completeness, reliability, usability or suitability, for any particular purpose of the data. The user is responsible for the accuracy, completeness, reliability, usability or suitability, for any particular purpose of the data. The user is responsible for the accuracy, completeness, reliability, usability or suitability, for any particular purpose of the data. The user is responsible for the accuracy, completeness, reliability, usability or suitability, for any particular purpose of the data.

U.S. ARMY CORPS OF ENGINEERS NEW ORLEANS DISTRICT	
Submitted:	Surveyed By: SP,SR
Recommended:	Plotted By: JH
Approved:	Checked By: JH



LEGEND		
--- Federal Navigation Channel	○ Cable Area	□ Borrow Area
— Federal Navigation Center Line	□ Placement Area	● Shoalest Sounding**
— As-built Pipeline/Cable	□ Anchorage Area	☆ Beacon, General
.... Unconfirmed Pipeline/Cable	⊗ Obstruction Point	♦ Red Navigation Buoy
— Project Depth Contour	✈ Wrecks-Submerged	◇ Green Navigation Buoy



**FRESHWATER BAYOU  
 LOWER CHANNEL  
 FB\_12\_LWR\_20230222\_CS  
 22 February 2023**

**Sheet  
 Reference  
 Number  
 12 of 19**

Revision Number:  
 4-2-2023(4/2)