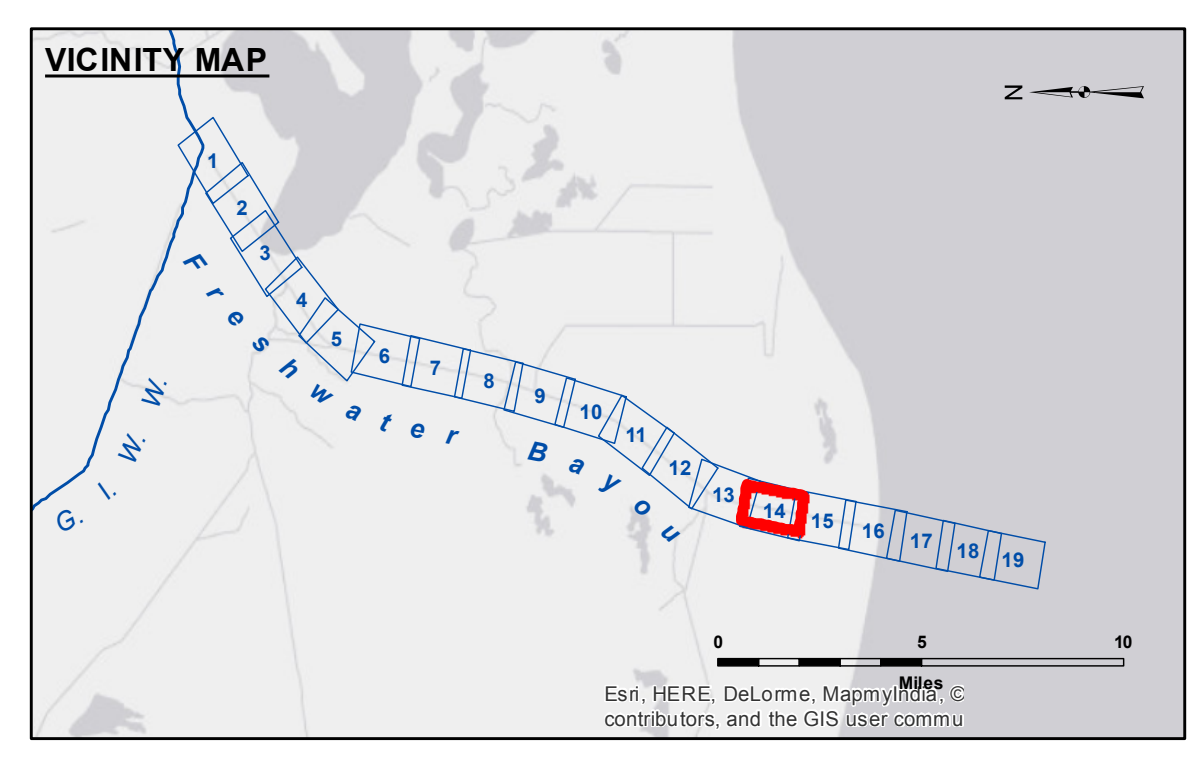
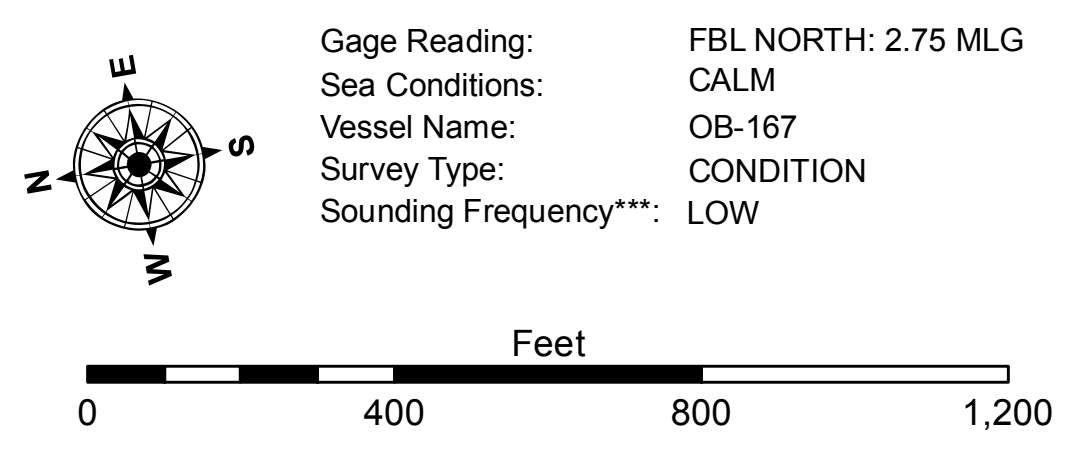


Sheet 13

Sheet 15



LEGEND			
	Federal Navigation Channel		Cable Area
	Federal Navigation Center Line		Placement Area
	As-built Pipeline/Cable		Borrow Area
	Unconfirmed Pipeline/Cable		Shoalest Sounding**
	Project Depth Contour		Beacon, General
	Obstruction Point		Red Navigation Buoy
	Wrecks-Submerged		Green Navigation Buoy
	-12' and above		
	-12' and below		



NOTES:
 Horizontal Coordinate System: North American Datum of 1983 (NAD83), projected to the State Plane Coordinate System (SPCS), Louisiana South Zone. Distance units in U.S. Survey Feet.
 Vertical Datum: Soundings are shown in feet and indicate depths below Mean Low Gulf Datum (MLG). Datum Relationships for gage 76592 / 76593 as of August 2011: 0.0' NAVD83 (2006.81) = 0.9' MLLW = 1.9' MLG or 0.0' MLLW = 1.0' MLG
 Distances on the Freshwater Bayou are shown at 1 mile intervals.
 The location of navigation aids are base on and provided by the U.S. Coast Guard and USACE survey crews.
 2010 Aerial Photography data source: NAIP
 Reference is N.O.A. Navigation Chart No. 11350.
 ** Shoalest Sounding per Quarter per Reach.
 *** High frequency (200 kHz) survey data represents the first signal return at a sounding location and will include suspended solids, known as "fluff", if present. Low frequency (20 kHz) survey data normally penetrates through this "fluff" layer to depict elevations of consolidated bottom material. Low frequency accuracies may vary depending on channel conditions and fathometer settings.

U.S. ARMY CORPS OF ENGINEERS NEW ORLEANS DISTRICT	
Submitted:	Surveyed By: SP/PM
Recommended:	Plotted By: BTD
Approved:	Checked By: AC

**FRESHWATER BAYOU
 LOWER CHANNEL
 FB_14_LWR_20161020
 20 October 2016**

**Sheet Reference Number
 14 of 19**

Revision Number: 3.8.9-20150202

DISCLAIMER: The United States Government furnishes these data and the recipient accepts and uses them with the express understanding that the data are not to be used for any purpose other than that for which they were prepared, and that the user is responsible for the results of any use of the data. The data are not to be used for any purpose other than that for which they were prepared, and that the user is responsible for the results of any use of the data. The data are not to be used for any purpose other than that for which they were prepared, and that the user is responsible for the results of any use of the data.

