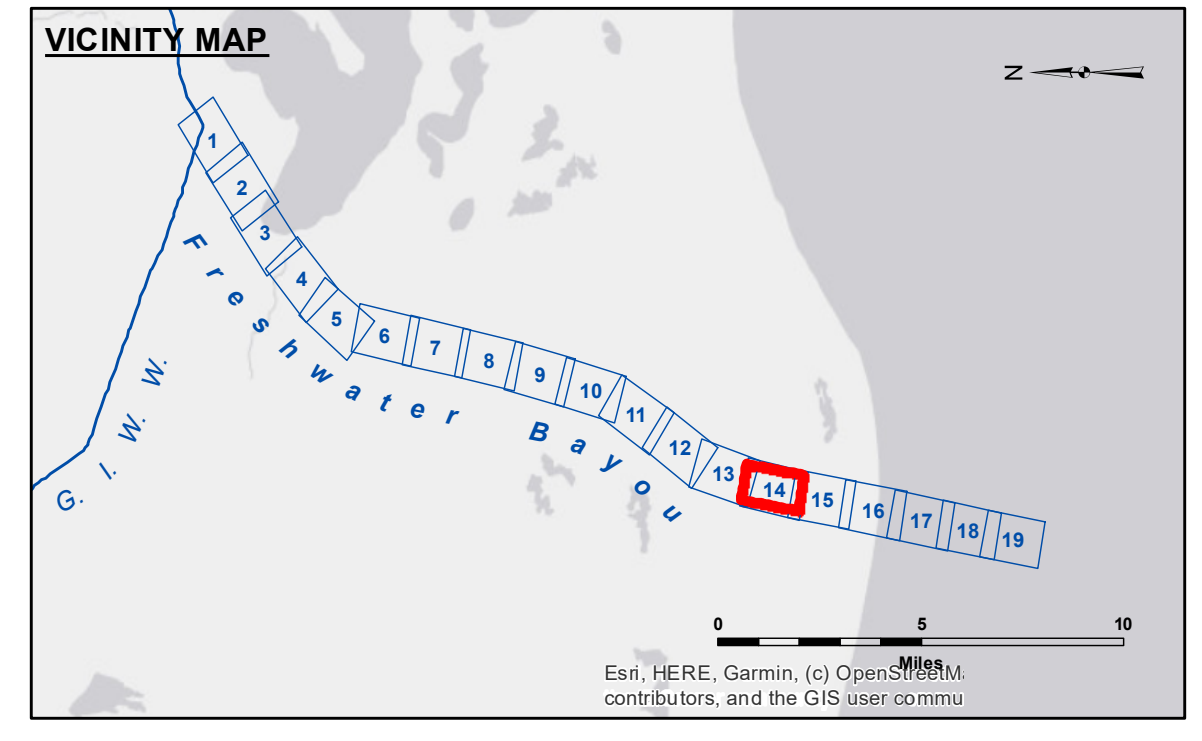


**DISCLAIMER**  
 The United States Government furnishes these data and the recipient accepts and uses them with the express understanding that the Government makes no warranty, expressed or implied, concerning the accuracy, completeness, reliability, usability, or suitability for any particular purpose of the data. The user is responsible for the results obtained from the use of the data for other than the intended purpose. Application of the data for other than the intended purpose is at the user's risk.  
 Data: Constant hydrographic survey data is subject to change rapidly due to several factors including but not limited to changing hydrographic conditions which develop after the date of the survey. The user is responsible for the results of the hydrographic conditions which develop after the date of the survey. The user is responsible for the results of the hydrographic conditions which develop after the date of the survey. The user is responsible for the results of the hydrographic conditions which develop after the date of the survey.

Submitted:	Surveyed By:	SCHAFER/CHAMPINE
Recommended:	Plotted By:	JH
Approved:	Checked By:	JH

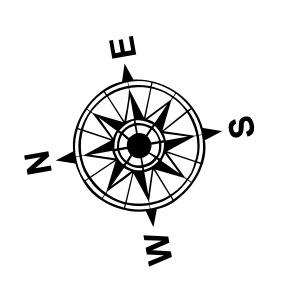
U.S. ARMY CORPS OF ENGINEERS  
 NEW ORLEANS DISTRICT  
 Chief, Waterways Maintenance Section

**FRESHWATER BAYOU  
 LOWER CHANNEL  
 FB\_14\_LWR\_20240626\_CS  
 26 June 2024**

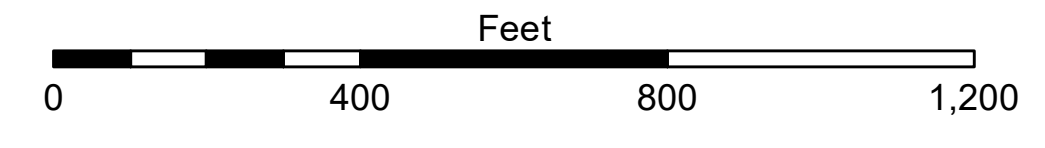


**LEGEND**

--- Federal Navigation Channel	○ Cable Area	□ Borrow Area	■ -12' and above
— Federal Navigation Center Line	□ Placement Area	● Shoalest Sounding**	□ -12' and below
— As-built Pipeline/Cable	□ Anchorage Area	★ Beacon, General	
..... Unconfirmed Pipeline/Cable	⊗ Obstruction Point	◆ Red Navigation Buoy	
— Project Depth Contour	⚓ Wrecks-Submerged	◆ Green Navigation Buoy	



Gage Reading: LB LOCK EAST: 3.20 MLG AVG  
 Sea Conditions: 0-1FT  
 Vessel Name: OB169  
 Survey Type: CONDITION  
 Sounding Frequency\*\*\*: LOW



**NOTES:**  
 Horizontal Coordinate System: North American Datum of 1983 (NAD83), projected to the State Plane Coordinate System (SPCS), Louisiana South Zone. Distance units in U.S. Survey Feet.  
 Vertical Datum: Soundings are shown in feet and indicate depths below Mean Low Gulf Datum (MLG). Datum Relationships for gage 76592 / 76593 as of August 2011: 0.0' NAVD83 (2006.81) = 0.9' MLLW = 1.9' MLG or 0.0' MLLW = 1.0' MLG  
 Distances on the Freshwater Bayou are shown at 1 mile intervals.  
 The location of navigation aids are based on and provided by the U.S. Coast Guard and USACE survey crews.  
 2017 Aerial Photography data source: NAIP  
 Reference is N.O.A. Navigation Chart No. 11350.  
 \*\* Shoalest Sounding per Quarter per Reach.  
 \*\*\* High frequency (200 kHz) survey data represents the first signal return at a sounding location and will include suspended solids, known as "fluff", if present. Low frequency (20 kHz) survey data normally penetrates through this "fluff" layer to depict elevations of consolidated bottom material. Low frequency accuracies may vary depending on channel conditions and fathometer settings.

**Sheet Reference Number  
 14 of 19**