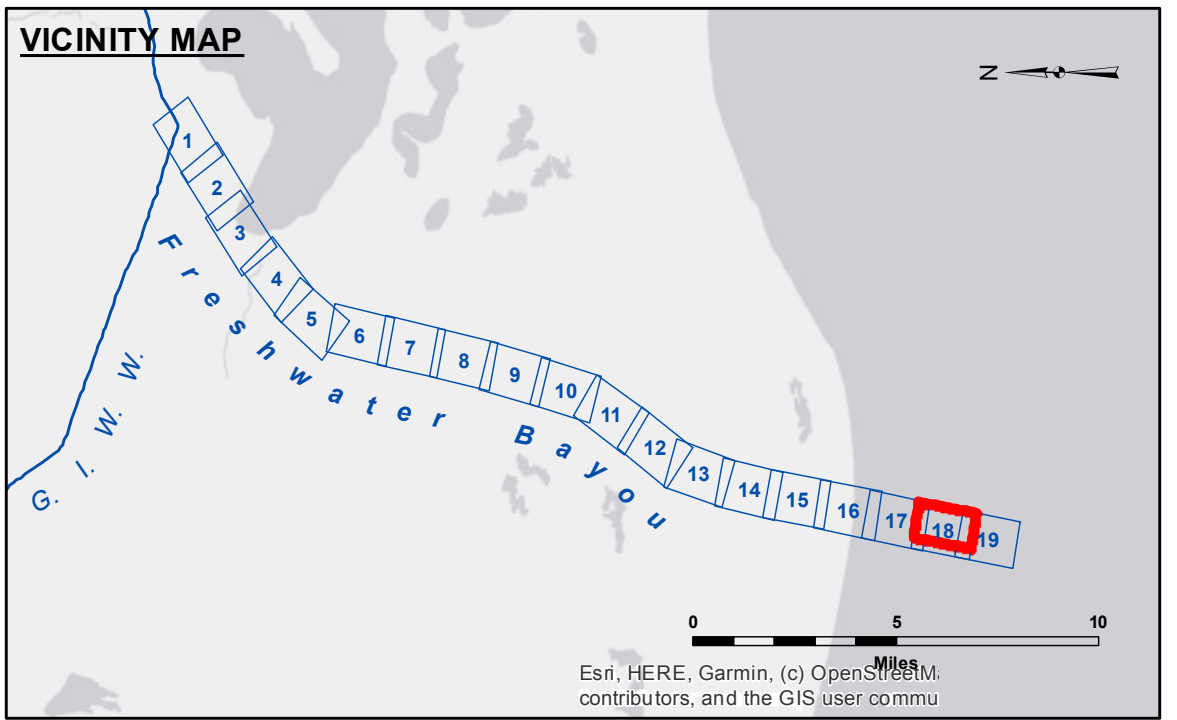


**DISCLAIMER**  
 The information depicted on this map represents the results of a hydrographic survey conducted by the U.S. Army Corps of Engineers. The user is responsible for the accuracy, completeness, and reliability of the data for its intended use. The user is responsible for the results of any application of the data for other than its intended purpose. The information depicted on this map represents the results of a hydrographic survey conducted by the U.S. Army Corps of Engineers. The user is responsible for the accuracy, completeness, and reliability of the data for its intended use. The user is responsible for the results of any application of the data for other than its intended purpose.

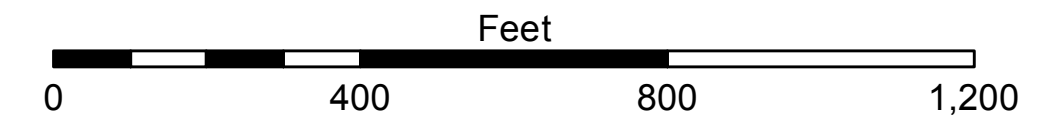
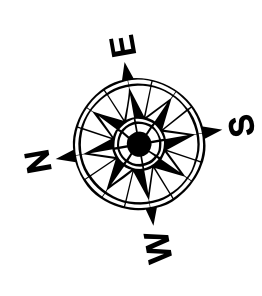
Submitted:	SP-SK
Recommended:	JH
Approved:	JH

**FRESHWATER BAYOU BAR CHANNEL**  
**FB\_18\_BAR\_20220228\_CS**  
**28 February 2022**



**LEGEND**

--- Federal Navigation Channel	○ Cable Area	□ Borrow Area	■ -12' and above
— Federal Navigation Center Line	□ Placement Area	● Shoalest Sounding**	□ -12' and below
— As-built Pipeline/Cable	□ Anchorage Area	★ Beacon, General	
..... Unconfirmed Pipeline/Cable	⊗ Obstruction Point	◆ Red Navigation Buoy	
— Project Depth Contour	✶ Wrecks-Submerged	◆ Green Navigation Buoy	



Gage Reading: FWBL SOUTH: 2.1 MLG AVG  
 Sea Conditions: CHOP  
 Vessel Name: OB-169  
 Survey Type: CONDITION  
 Sounding Frequency\*\*\*: LOW

**NOTES:**  
 Horizontal Coordinate System: North American Datum of 1983 (NAD83), projected to the State Plane Coordinate System (SPCS), Louisiana South Zone. Distance units in U.S. Survey Feet.  
 Vertical Datum: Soundings are shown in feet and indicate depths below Mean Low Gulf Datum (MLG). Datum Relationships for gage 76592 / 76593 as of August 2011: 0.0' NAVD83 (2006.81) = 0.9' MLLW = 1.9' MLG or 0.0' MLLW = 1.0' MLG  
 Distances on the Freshwater Bayou are shown at 1 mile intervals.  
 The location of navigation aids are base on and provided by the U.S. Coast Guard and USACE survey crews.  
 2015 Aerial Photography data source: NAIP  
 Reference is N.O.A. Navigation Chart No. 11350.  
 \*\* Shoalest Sounding per Quarter per Reach.  
 \*\*\* High frequency (200 kHz) survey data represents the first signal return at a sounding location and will include suspended solids, known as "fluff", if present. Low frequency (20 kHz) survey data normally penetrates through this "fluff" layer to depict elevations of consolidated bottom material. Low frequency accuracies may vary depending on channel conditions and fathometer settings.

**Sheet Reference Number**  
**18 of 19**