

**Accession**  
 The information depicted on this map represents the results of a survey conducted by the U.S. Army Corps of Engineers. It is not intended to represent the general condition existing at that time.

**Accession**  
 The United States Government furnishes these data and the recipient accepts and uses them with the express understanding that the data are not intended to represent the general condition existing at that time.

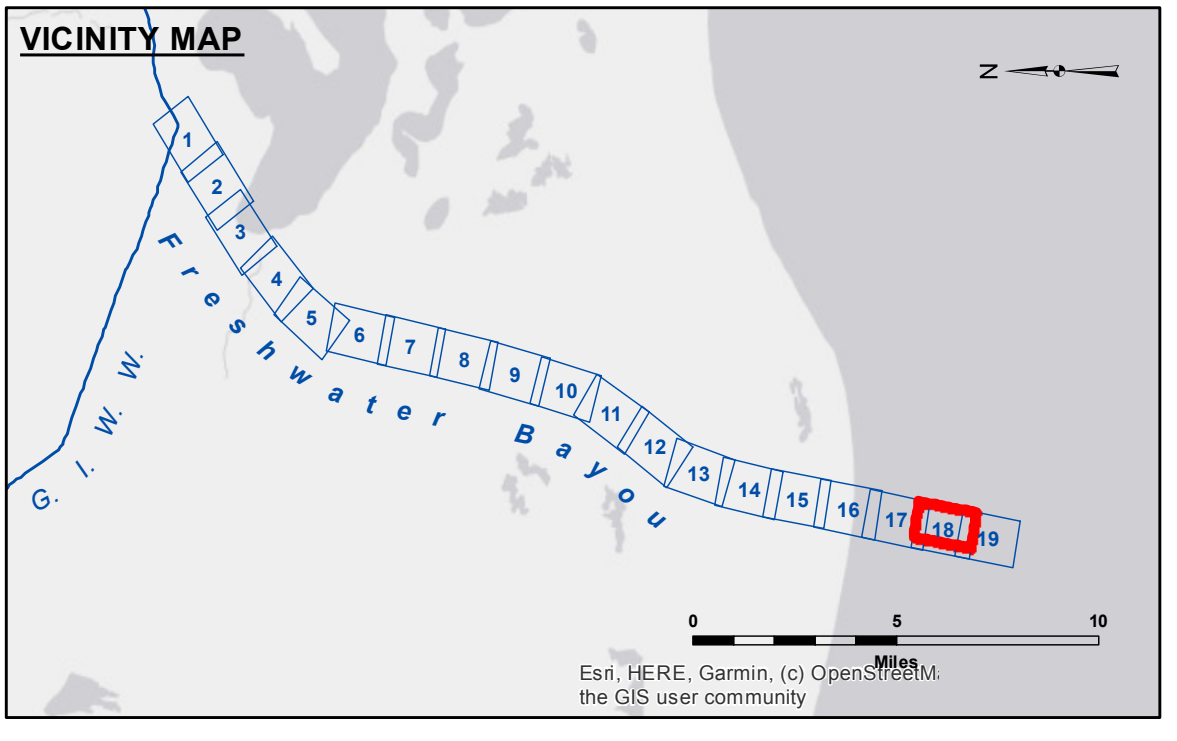
**Accession**  
 The United States Government furnishes these data and the recipient accepts and uses them with the express understanding that the data are not intended to represent the general condition existing at that time.

**Accession**  
 The United States Government furnishes these data and the recipient accepts and uses them with the express understanding that the data are not intended to represent the general condition existing at that time.

U.S. ARMY CORPS OF ENGINEERS NEW ORLEANS DISTRICT		
Submitted:	Surveyed By: SP/SP	Plotted By: BD
Recommended:	Chart, Survey Section	Checked By: AD/JH
Approved:	Chief, Waterways Maintenance Section	

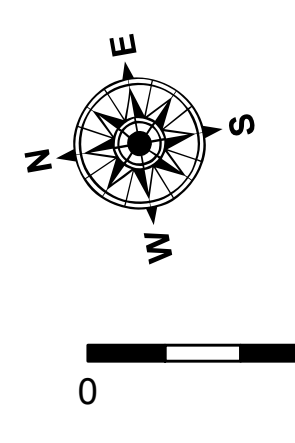
**FRESHWATER BAYOU  
 BAR CHANNEL  
 FB\_18\_BAR\_20230302\_CS  
 02 March 2023**

**Sheet Reference Number  
 18 of 19**

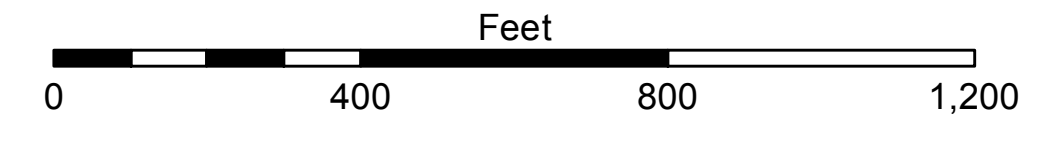


**LEGEND**

--- Federal Navigation Channel	○ Cable Area	□ Borrow Area	■ -12' and above
— Federal Navigation Center Line	□ Placement Area	● Shoalest Sounding**	□ -12' and below
— As-built Pipeline/Cable	□ Anchorage Area	☆ Beacon, General	
..... Unconfirmed Pipeline/Cable	⊗ Obstruction Point	◆ Red Navigation Buoy	
— Project Depth Contour	⚓ Wrecks-Submerged	◆ Green Navigation Buoy	



Gage Reading: NTRIP VRS RTK: 3.26 MLG AVG.  
 Sea Conditions: CHOPPY  
 Vessel Name: OB-169  
 Survey Type: CONDITION  
 Sounding Frequency\*\*\*: LOW



**NOTES:**  
 Horizontal Coordinate System: North American Datum of 1983 (NAD83), projected to the State Plane Coordinate System (SPCS), Louisiana South Zone. Distance units in U.S. Survey Feet.  
 Vertical Datum: Soundings are shown in feet and indicate depths below Mean Low Gulf Datum (MLG). Datum Relationships for gage 76592 / 76593 as of August 2011: 0.0' NAVD83 (2011) = 0.9' MLLW = 1.9' MLG or 0.0' MLLW = 1.0' MLG  
 Distances on the Freshwater Bayou are shown at 1 mile intervals.  
 The location of navigation aids are based on and provided by the U.S. Coast Guard and USACE survey crews.  
 2015 Aerial Photography data source: NAIP  
 Reference is N.O.A. Navigation Chart No. 11350.  
 \*\* Shoalest Sounding per Quarter per Reach.  
 \*\*\* High frequency (200 kHz) survey data represents the first signal return at a sounding location and will include suspended solids, known as "fluff", if present. Low frequency (20 kHz) survey data normally penetrates through this "fluff" layer to depict elevations of consolidated bottom material. Low frequency accuracies may vary depending on channel conditions and fathometer settings.