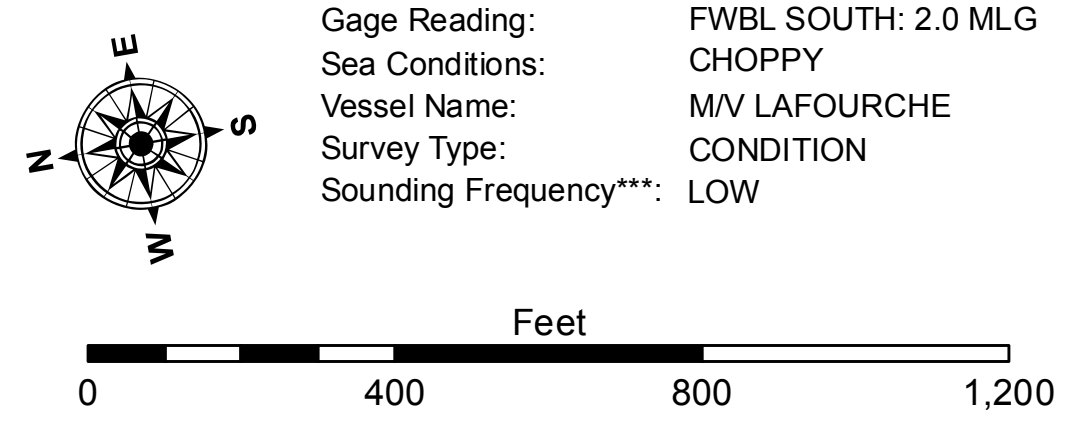


LEGEND

| | | | |
|----------------------------------|---------------------|-------------------------|------------------|
| --- Federal Navigation Channel | ○ Cable Area | □ Borrow Area | ■ -12' and above |
| — Federal Navigation Center Line | □ Placement Area | ● Shoalest Sounding** | □ -12' and below |
| — As-built Pipeline/Cable | □ Anchorage Area | ★ Beacon, General | |
| Unconfirmed Pipeline/Cable | ⊗ Obstruction Point | ◆ Red Navigation Buoy | |
| — Project Depth Contour | ⚓ Wrecks-Submerged | ◆ Green Navigation Buoy | |



Gage Reading: FWBL SOUTH: 2.0 MLG
 Sea Conditions: CHOPPY
 Vessel Name: M/V LAFOURCHE
 Survey Type: CONDITION
 Sounding Frequency***: LOW

NOTES:
 Horizontal Coordinate System: North American Datum of 1983 (NAD83), projected to the State Plane Coordinate System (SPCS), Louisiana South Zone. Distance units in U.S. Survey Feet.
 Vertical Datum: Soundings are shown in feet and indicate depths below Mean Low Gulf Datum (MLG). Datum Relationships for gage 76592 / 76593 as of August 2011: 0.0' NAVD83 (2006.81) = 0.9' MLLW = 1.9' MLG or 0.0' MLLW = 1.0' MLG
 Distances on the Freshwater Bayou are shown at 1 mile intervals.
 The location of navigation aids are base on and provided by the U.S. Coast Guard and USACE survey crews.
 2015 Aerial Photography data source: NAIP
 Reference is N.O.A. Navigation Chart No. 11350.
 ** Shoalest Sounding per Quarter per Reach.
 *** High frequency (200 kHz) survey data represents the first signal return at a sounding location and will include suspended solids, known as "fluff", if present. Low frequency (20 kHz) survey data normally penetrates through this "fluff" layer to depict elevations of consolidated bottom material. Low frequency accuracies may vary depending on channel conditions and fathometer settings.



Access/Map: These data and the recipient accepts and uses them with the express understanding that the data are not to be used for any purpose other than that for which they were collected. The user is responsible for the results of any application of the data for other than its intended purpose. Data Constraints: Hydrographic survey data is subject to change rapidly due to several factors including, but not limited to, changing hydrographical conditions which develop after the date of the survey. The information depicted on this map represents the results of a survey and is not to be used for any purpose other than that for which it was collected. The information depicted on this map represents the results of a survey and is not to be used for any purpose other than that for which it was collected.

| | |
|--|----------------|
| U.S. ARMY CORPS OF ENGINEERS NEW ORLEANS DISTRICT | |
| Submitted: | RYLAND/SIMMONS |
| Reviewed By: | BD |
| Checked By: | AC |

**FRESHWATER BAYOU
 BAR CHANNEL
 FB_19_BAR_20210302_CS
 02 March 2021**

**Sheet
 Reference
 Number
 19 of 19**