

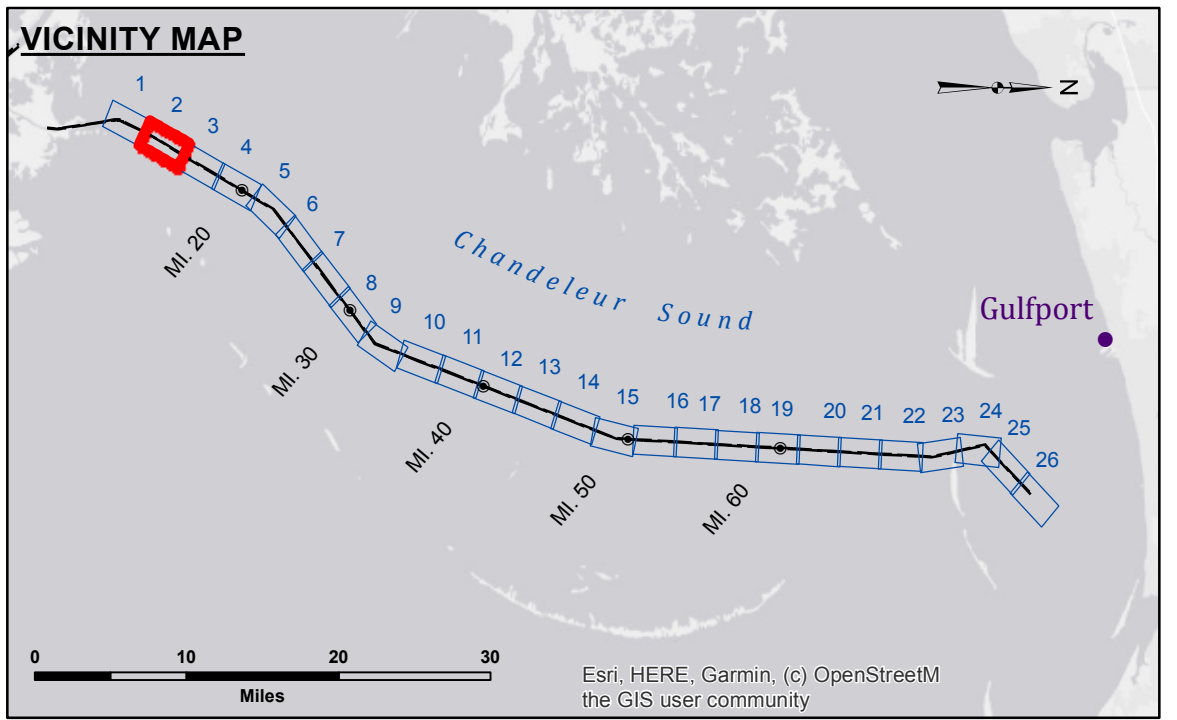
**Distribution Liability:** The data represents the results of data collection/processing for a specific US Army Corps of Engineers project. It is only valid for its intended use, control, time and accuracy specifications. The user is responsible for the results. The application of the data for other than its intended purpose is not warranted. Data Constants: Hydrographic survey data is subject to change rapidly due to several factors including but not limited to changing hydrographic conditions when developed after the date of the survey. The US Army Corps of Engineers accepts no responsibility for changes in the hydrographic conditions when developed after the date of the survey. Product maintainers should not rely solely upon this internal use.

**Access Constraints:** The United States Government furnishes these data and the recipient accepts and uses them with the express understanding that the data are not to be used for any purpose other than that for which they were collected, expressed, or implied concerning the accuracy, completeness, readability, usability or suitability, for any particular purpose of the recipient. The recipient understands that the data are provided under no liability whatsoever to any person by reason of any use made thereof. These data belong to the Government. Therefore the recipient may not transfer, reproduce, or disseminate these data to others without the written consent of the U.S. Army Corps of Engineers. The recipient may not transfer these data to others without the written consent of the U.S. Army Corps of Engineers. The information depicted on this map represents the results of a survey conducted on the general condition existing at that time.

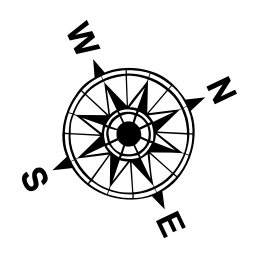
U.S. ARMY CORPS OF ENGINEERS NEW ORLEANS DISTRICT		
Submitted:	Surveyed By: LLB & DED	Checked By: MSK
Recommended: Chief, Survey Section	Plotted By: TSS	
Approved:	Other, Waterways Maintenance Section	

**GULF INTRACOASTAL WATERWAY  
CHANDELEUR ALT. ROUTE  
GC\_02\_B2G\_20200917\_CS\_POSTSTORM\_PRO  
17 September 2020**

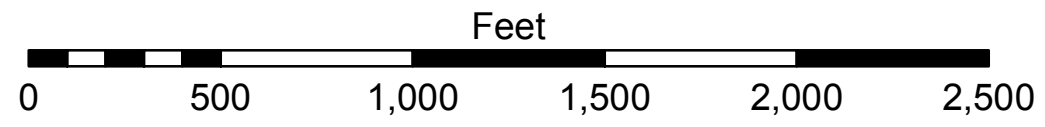
**Sheet  
Reference  
Number  
2 of 26**



LEGEND		
--- Federal Navigation Channel	○ Cable Area	□ Borrow Area
— Federal Navigation Center Line	■ Placement Area	● Shoalest Sounding**
— As-built Pipeline/Cable	□ Anchorage Area	☆ Beacon, General
..... Unconfirmed Pipeline/Cable	⊗ Obstruction Point	♦ Red Navigation Buoy
— Project Depth Contour	⚓ Wrecks-Submerged	◆ Green Navigation Buoy
		■ -12' and above
		□ -12' and below



Gage Reading: 1.84 MLLW @ DM 16 @ 0930  
 Sea Conditions: SLIGHT CHOP 1'- 2' SEAS  
 Vessel Name: BLANCHARD  
 Survey Type: CONDITION, SB  
 Sounding Frequency\*\*\*: LOW



**NOTES:**  
 Horizontal Coordinate System:  
 North American Datum of 1983 (NAD83), projected to the State Plane Coordinate System (SPCS), Louisiana South Zone. Distance units in U.S. Survey Feet.  
 Vertical Datum:  
 Soundings are shown in feet and indicate depths below Mean Lower Low Water (MLLW).  
 Datum relationships at Baptiste Collette as of 01 May 2013:  
 0.0' MLLW (2002-2006) = 0.0' NAVD83 (2009.55) = 3.5' MLG  
 Distances on the GIWW, Chandeleur to Gulfport Route are shown at 1 mile intervals.  
 The location of navigation aids are base on and provided by the U.S. Coast Guard.  
 2013 Aerial Photography data source: GEOCLIP, Atlantic Group, LLC.  
 Reference is N.O.A. Navigation Chart No. 11353.  
 \*\* Shoalest Sounding per Quarter per Reach.  
 \*\*\* High frequency (200 kHz) survey data represents the first signal return at a sounding location and will include suspended solids, known as "fluff", if present. Low frequency (20 kHz) survey data normally penetrates through this "fluff" layer to depict elevations of consolidated bottom material. Low frequency accuracies may vary depending on channel conditions and fathometer settings.