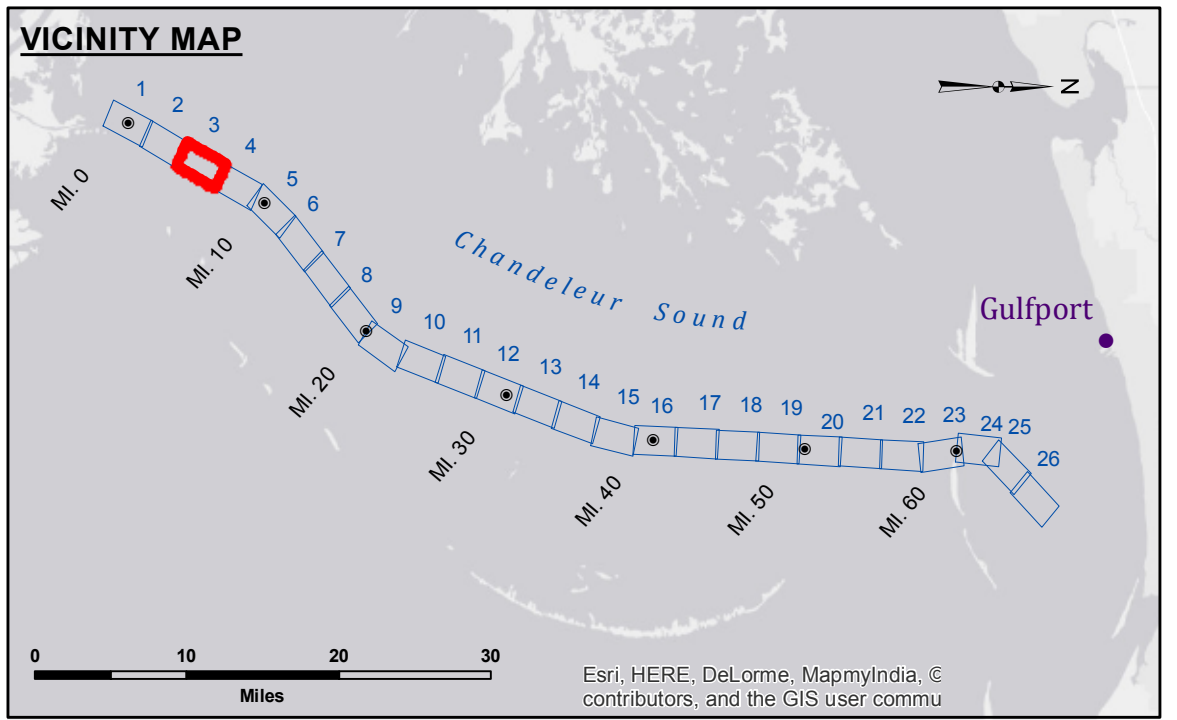


DISCLAIMER
 The information depicted on this map represents the results of a survey conducted on the date shown. It is not intended to represent the general condition existing at that time.
 The United States Government furnishes these data and the recipient accepts and uses them with the express understanding that the Government makes no warranty, expressed or implied, concerning the accuracy, completeness, reliability, usability or suitability for any particular purpose of the information. The user is responsible for the results of the application of the data for other than its intended purpose.
 Data Contents: Hydrographic survey data is subject to change due to several factors including but not limited to dredging, accretion, scour, and other natural processes. The user is responsible for these data to others without transferring the Disclaimer.
 The information depicted on this map represents the results of a survey conducted on the date shown. It is not intended to represent the general condition existing at that time.

U.S. ARMY CORPS OF ENGINEERS NEW ORLEANS DISTRICT	
Submitted:	Surveyed By: SP, PM
Recommended: Chief, Survey Section	Plotted By: BTD
Approved: Chief, Waterways Maintenance Section	Checked By: RN

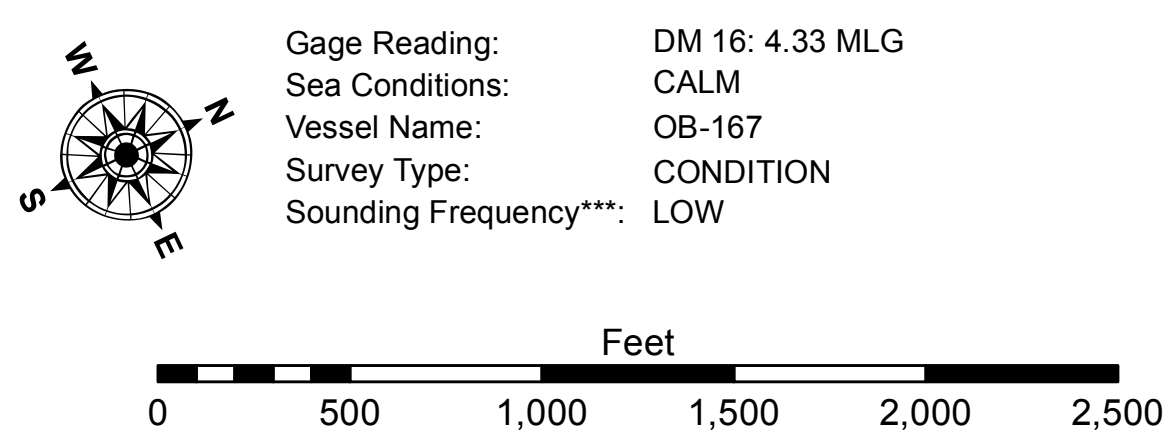
**GULF INTRACOASTAL WATERWAY
 CHANDELEUR ALT. ROUTE
 GC_03_B2G_20151216
 16 December 2015**

**Sheet
 Reference
 Number
 3 of 26**



LEGEND

--- Federal Navigation Channel	○ Cable Area	□ Borrow Area
— Federal Navigation Center Line	■ Placement Area	● Shoalest Sounding**
— As-built Pipeline/Cable	□ Anchorage Area	☆ Beacon, General
..... Unconfirmed Pipeline/Cable	⊗ Obstruction Point	◆ Red Navigation Buoy
— Project Depth Contour	✶ Wrecks-Submerged	◆ Green Navigation Buoy
		■ -12' and above
		□ -12' and below



NOTES:
 Horizontal Coordinate System:
 North American Datum of 1983 (NAD83), projected to the State Plane Coordinate System (SPCS), Louisiana South Zone. Distance units in U.S. Survey Feet.
 Vertical Datum:
 Soundings are shown in feet and indicate depths below Mean Low Gulf (MLG).
 Datum relationships at Baptiste Collette as of 01 May 2013:
 0.0' MLLW (2002-2006) = 0.0' NAVD83 (2009.55) = 3.5' MLG
 Distances on the GIWW, Chandeleur to Gulfport Route are shown at 1 mile intervals.
 The location of navigation aids are based on and provided by the U.S. Coast Guard.
 2013 Aerial Photography data source: GEOCLIP, Atlantic Group, LLC.
 Reference is N.O.A.A. Navigation Chart No. 11353.
 ** Shoalest Sounding per Quarter per Reach.
 *** High frequency (200 kHz) survey data represents the first signal return at a sounding location and will include suspended solids, known as "fluff", if present. Low frequency (20 kHz) survey data normally penetrates through this "fluff" layer to depict elevations of consolidated bottom material. Low frequency accuracies may vary depending on channel conditions and fathometer settings.