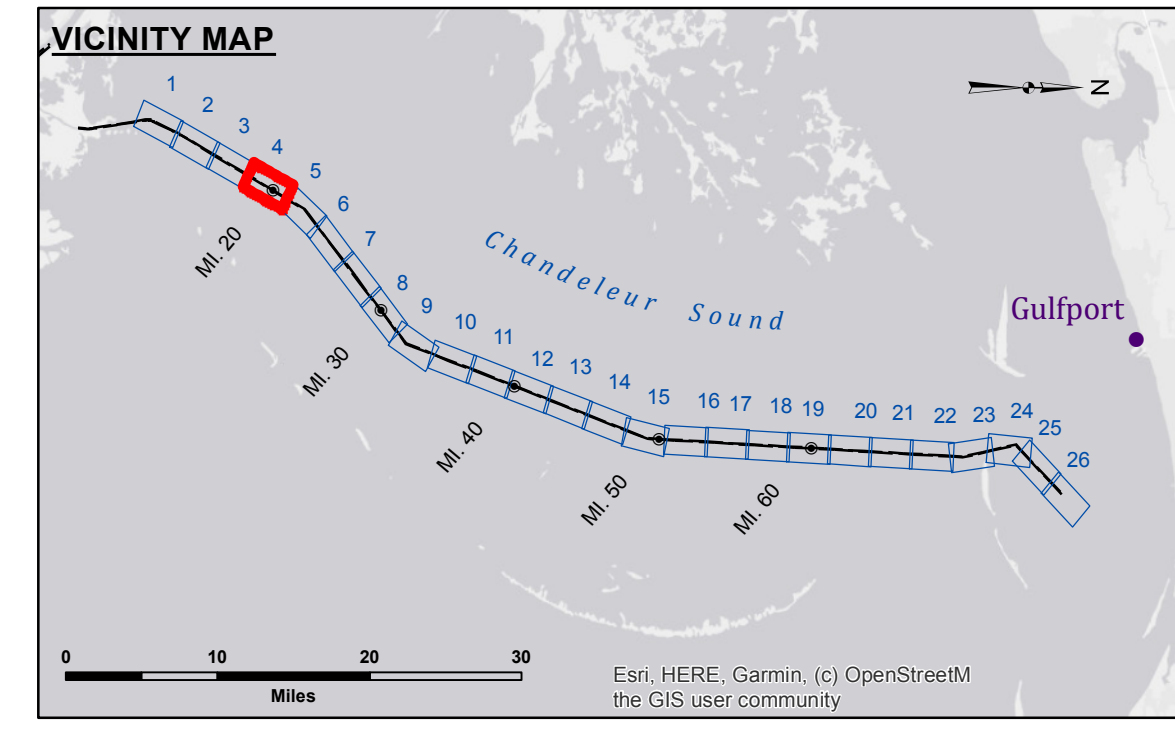


Access to Data
 The United States Government furnishes these data and the recipient accepts and uses them with the express understanding that the data are not to be used for any purpose other than that for which they were originally collected, and that the data are not to be used for any purpose other than that for which they were originally collected. The user is responsible for the results of any use of the data for other than its intended purpose. The application of the data for other than its intended purpose. Data Constants: Hydrographic survey data is subject to change rapidly due to several factors including but not limited to: changing hydrographic conditions, changes in the bathymetry of the area, changes in the hydrographical conditions when developing the data of the area, and changes in the hydrographical conditions when developing the data of the area. Product maintainers should not rely solely upon this information.

U.S. ARMY CORPS OF ENGINEERS NEW ORLEANS DISTRICT	
Submitted:	SR, SP, AO
Recommended:	Chief, Survey Section
Approved:	Chief, Waterways Maintenance Section

**GULF INTRACOASTAL WATERWAY
 CHANDELEUR ALT. ROUTE
 GC_04_B2G_20200623_CS
 23 June 2020**

**Sheet Reference Number
 4 of 26**



LEGEND			
--- Federal Navigation Channel	○ Cable Area	□ Borrow Area	
— Federal Navigation Center Line	■ Placement Area	● Shoalest Sounding**	
— As-built Pipeline/Cable	□ Anchorage Area	☆ Beacon, General	■ -12' and above
..... Unconfirmed Pipeline/Cable	⊗ Obstruction Point	◆ Red Navigation Buoy	□ -12' and below
— Project Depth Contour	✶ Wrecks-Submerged	◆ Green Navigation Buoy	

Gage Reading: DM 16: 1.1 MLLW AVG
Sea Conditions: CALM
Vessel Name: MV TECHE
Survey Type: CS
Sounding Frequency*:** HIGH

Vertical Datum:
 Soundings are shown in feet and indicate depths below Mean Lower Low Water (MLLW) as per VDatum corrections.
 Datum relationships at Baptiste Collette as of 01 May 2013:
 0.0' MLLW (2002-2006) = 0.0' NAVD88 (2009.55) = 3.5' MLG

Distances on the GIWW, Chandeleur to Gulfport Route are shown at 1 mile intervals.
 The location of navigation aids are based on and provided by the U.S. Coast Guard.
 2013 Aerial Photography data source: GEOCLIP, Atlantic Group, LLC.
 Reference is N.O.A.A. Navigation Chart No. 11353.
 ** Shoalest Sounding per Quarter per Reach.
 *** High frequency (200 kHz) survey data represents the first signal return at a sounding location and will include suspended solids, known as "fluff", if present. Low frequency (20 kHz) survey data normally penetrates through this "fluff" layer to depict elevations of consolidated bottom material. Low frequency accuracies may vary depending on channel conditions and fathometer settings.

NOTES:
 Horizontal Coordinate System:
 North American Datum of 1983 (NAD83), projected to the State Plane Coordinate System (SPCS), Louisiana South Zone. Distance units in U.S. Survey Feet.
 Vertical Datum:
 Soundings are shown in feet and indicate depths below Mean Lower Low Water (MLLW) as per VDatum corrections.
 Datum relationships at Baptiste Collette as of 01 May 2013:
 0.0' MLLW (2002-2006) = 0.0' NAVD88 (2009.55) = 3.5' MLG
 Distances on the GIWW, Chandeleur to Gulfport Route are shown at 1 mile intervals.
 The location of navigation aids are based on and provided by the U.S. Coast Guard.
 2013 Aerial Photography data source: GEOCLIP, Atlantic Group, LLC.
 Reference is N.O.A.A. Navigation Chart No. 11353.
 ** Shoalest Sounding per Quarter per Reach.
 *** High frequency (200 kHz) survey data represents the first signal return at a sounding location and will include suspended solids, known as "fluff", if present. Low frequency (20 kHz) survey data normally penetrates through this "fluff" layer to depict elevations of consolidated bottom material. Low frequency accuracies may vary depending on channel conditions and fathometer settings.