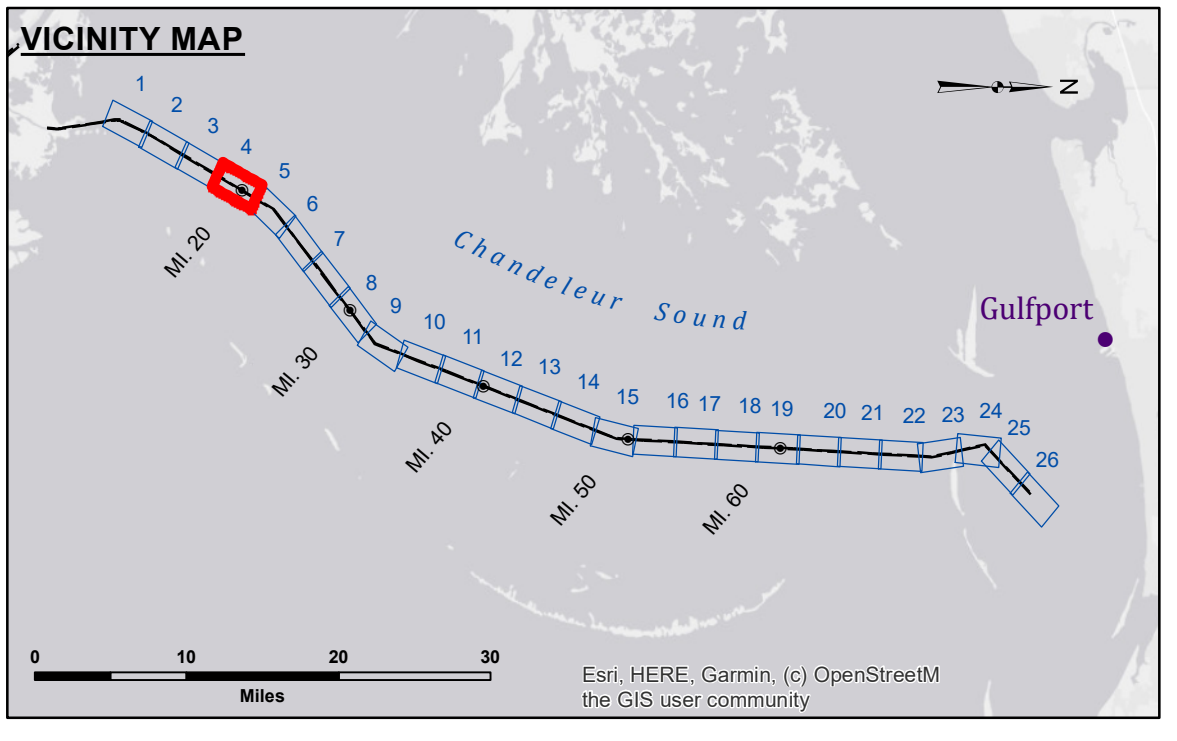


DISCLAIMER
 The United States Government furnishes these data and the recipient accepts and uses them with the express understanding that the data are not to be used for any purpose other than that for which they were originally collected, and that the data are not to be used for any purpose other than that for which they were originally collected, and that the data are not to be used for any purpose other than that for which they were originally collected.

| | |
|--|--------------------------|
| U.S. ARMY CORPS OF ENGINEERS NEW ORLEANS DISTRICT | |
| Submitted: | Surveyed By: LB & SJR |
| Recommended: Chief Survey Station | Placed By: AO |
| Approved: Chief Waterways Maintenance Section | Checked By: AO |



| LEGEND | | |
|----------------------------------|---------------------|-------------------------|
| --- Federal Navigation Channel | ○ Cable Area | □ Borrow Area |
| — Federal Navigation Center Line | ■ Placement Area | ● Shoalest Sounding** |
| — As-built Pipeline/Cable | □ Anchorage Area | ☆ Beacon, General |
| Unconfirmed Pipeline/Cable | ⊗ Obstruction Point | ◆ Red Navigation Buoy |
| — Project Depth Contour | ⚓ Wrecks-Submerged | ◇ Green Navigation Buoy |
| | | ■ -12' and above |
| | | □ -12' and below |

Gage Reading: 1.0 MLLW @ DM 16 @ 0930
Sea Conditions: SLIGHT CHOP 2'- 3' SEAS
Vessel Name: TECHE
Survey Type: CONDITION, SB
Sounding Frequency*:** LOW

NOTES:
 Horizontal Coordinate System:
 North American Datum of 1983 (NAD83), projected to the State Plane Coordinate System (SPCS), Louisiana South Zone. Distance units in U.S. Survey Feet.
 Vertical Datum:
 Soundings are shown in feet and indicate depths below Mean Lower Low Water (MLLW) as per VDatum corrections.
 Datum relationships at Baptiste Collette as of 01 May 2013:
 0.0' MLLW (2002-2006) = 0.0' NAVD88 (2009.55) = 3.5' MLG
 Distances on the GIWW, Chandeleur to Gulfport Route are shown at 1 mile intervals.
 The location of navigation aids are base on and provided by the U.S. Coast Guard.
 2013 Aerial Photography data source: GEOCLIP, Atlantic Group, LLC.
 Reference is N.O.A. Navigation Chart No. 11353.
 ** Shoalest Sounding per Quarter per Reach.
 *** High frequency (200 kHz) survey data represents the first signal return at a sounding location and will include suspended solids, known as "fluff", if present. Low frequency (20 kHz) survey data normally penetrates through this "fluff" layer to depict elevations of consolidated bottom material. Low frequency accuracies may vary depending on channel conditions and fathometer settings.

**GULF INTRACOASTAL WATERWAY
 CHANDELEUR ALT. ROUTE
 GC_04_B2G_2021030_CS_POSTSTORM_PRO
 30 October 2020**

**Sheet Reference Number
 4 of 26**

Revision Number:
 4.1-2019115