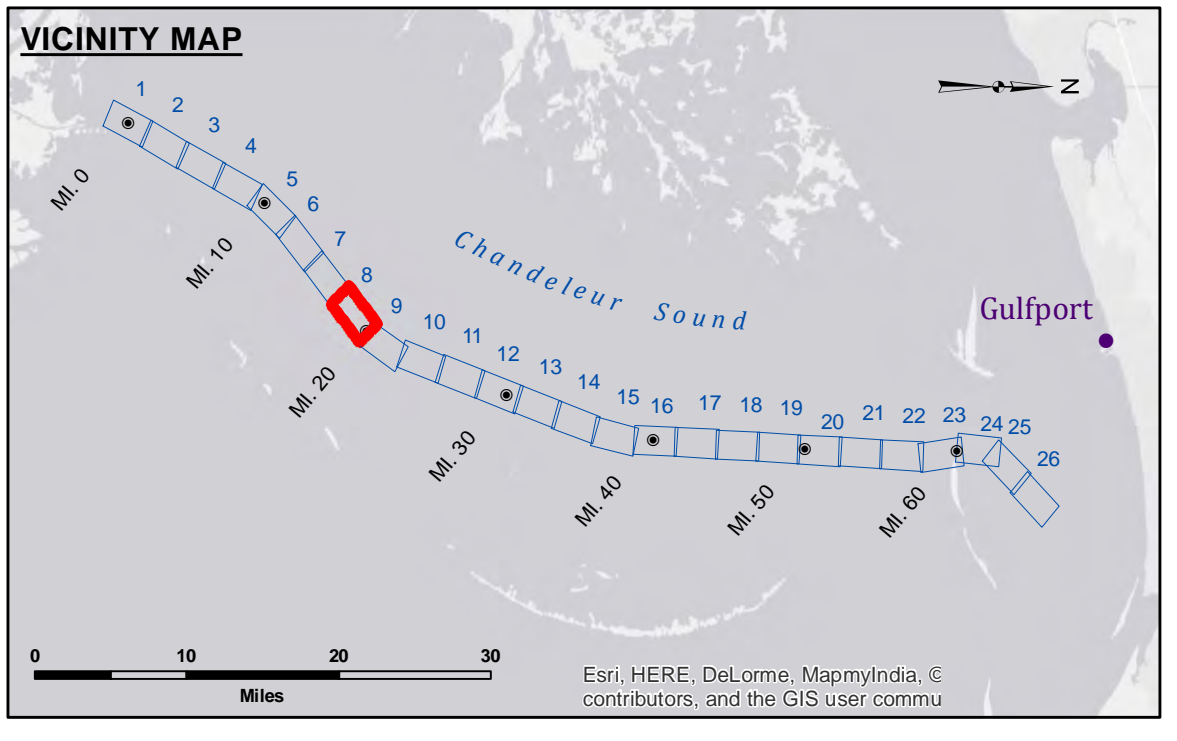


DISCLAIMER
 The United States Government furnishes these data and the recipient accepts and uses them with the express understanding that the Government makes no warranty, expressed or implied, concerning the accuracy, completeness, reliability, usability or suitability for any particular purpose of the information. The user is responsible for the results of the application of the data for other than its intended purpose.
 Data Comments: Hydrographic survey data is subject to change due to several factors including but not limited to dredging, shifting sandbars, and other natural processes. The Army Corps of Engineers does not assume responsibility for changes in the hydrographical conditions which develop after the date of the survey. Project maintainers should not rely solely upon it.
 The information depicted on this map represents the results of a survey conducted on or about the date indicated and is considered to represent the general condition existing at that time.

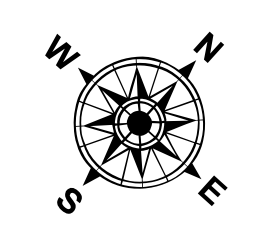
U.S. ARMY CORPS OF ENGINEERS NEW ORLEANS DISTRICT		
Submitted:	Surveyed By: AO/SPSR	Placed By: AO
Recommended: Chief, Survey Section	Checked By: RM	Approved By: RM

**GULF INTRACOASTAL WATERWAY
 CHANDELEUR ALT. ROUTE
 GC_08_B2G_20150211
 11 February 2015**

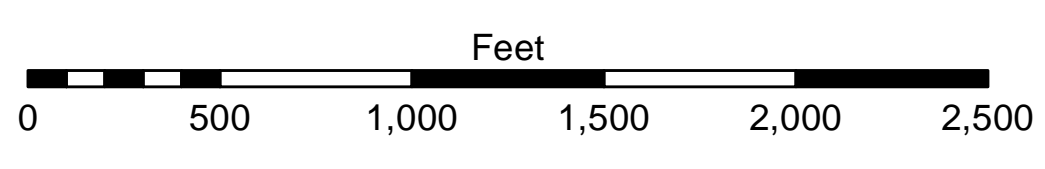


LEGEND

--- Federal Navigation Channel	○ Cable Area	□ Borrow Area
— Federal Navigation Center Line	■ Placement Area	● Shoalest Sounding**
— As-built Pipeline/Cable	□ Anchorage Area	★ Beacon, General
..... Unconfirmed Pipeline/Cable	⊗ Obstruction Point	◆ Red Navigation Buoy
— Project Depth Contour	✈ Wrecks-Submerged	◆ Green Navigation Buoy



Gage Reading: DM16: 3.6 MLG AVG
 Sea Conditions: 1'-3'
 Vessel Name: M/V TECHE
 Survey Type: CONDITION, PPK
 Sounding Frequency***: HIGH



NOTES:
 Horizontal Coordinate System:
 North American Datum of 1983 (NAD83), projected to the State Plane Coordinate System (SPCS), Louisiana South Zone. Distance units in U.S. Survey Feet.
 Vertical Datum:
 Soundings are shown in feet and indicate depths below Mean Low Gulf (MLG).
 Datum relationships at Baptiste Collette as of 01 May 2013:
 0.0' MLLW (2002-2006) = 0.0' NAVD88 (2009.55) = 3.5' MLG
 Distances on the GIWW, Chandeleur to Gulfport Route are shown at 1 mile intervals.
 The location of navigation aids are base on and provided by the U.S. Coast Guard.
 2013 Aerial Photography data source: GEOCLIP, Atlantic Group, LLC.
 Reference is N.O.A.A. Navigation Chart No. 11363.
 ** Shoalest Sounding per Quarter per Reach.
 *** High frequency (200 kHz) survey data represents the first signal return at a sounding location and will include suspended solids, known as "fluff", if present. Low frequency (20 kHz) survey data normally penetrates through this "fluff" layer to depict elevations of consolidated bottom material. Low frequency accuracies may vary depending on channel conditions and fathometer settings.

**Sheet
 Reference
 Number
 8 of 26**