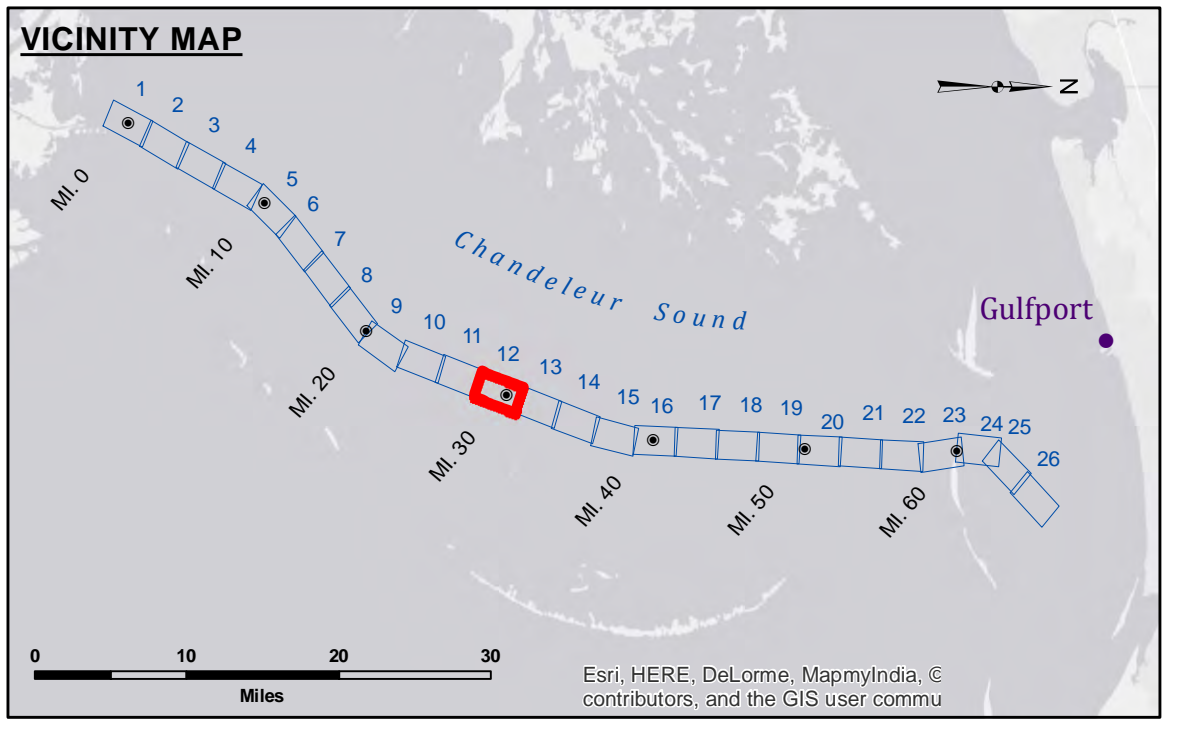


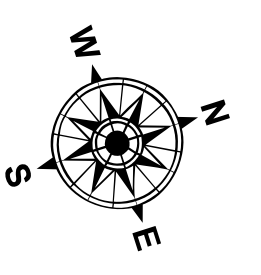
**DISCLAIMER**  
 The United States Government furnishes these data and the recipient accepts and uses them with the express understanding that the Government makes no warranty, expressed or implied, concerning the accuracy, completeness, reliability, usability or suitability for any particular purpose of the information. The user is responsible for the results obtained from the application of the data for other than its intended purpose.  
 Data Contents: Hydrographic survey data is subject to change and may not be current. The user is responsible for the results obtained from the application of the data for other than its intended purpose. The user is responsible for the results obtained from the application of the data for other than its intended purpose. The user is responsible for the results obtained from the application of the data for other than its intended purpose. The user is responsible for the results obtained from the application of the data for other than its intended purpose.

U.S. ARMY CORPS OF ENGINEERS NEW ORLEANS DISTRICT	
Submitted:	Surveyed By: AO/SPSR
Recommended: Chief, Survey Section	Placed By: AO
Approved: Chief, Waterways Maintenance Section	Checked By: RM

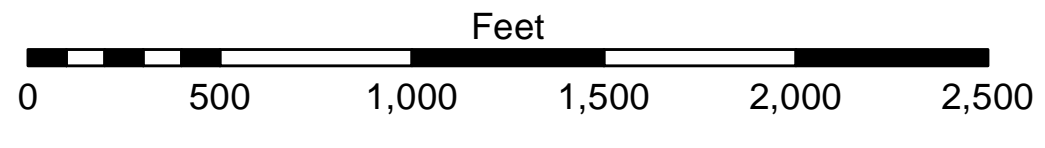
**GULF INTRACOASTAL WATERWAY  
 CHANDELEUR ALT. ROUTE  
 GC\_12\_B2G\_20150311  
 11 March 2015**



LEGEND	
--- Federal Navigation Channel	○ Cable Area
— Federal Navigation Center Line	■ Placement Area
— As-built Pipeline/Cable	□ Anchorage Area
..... Unconfirmed Pipeline/Cable	⊗ Obstruction Point
— Project Depth Contour	✈ Wrecks-Submerged
□ Borrow Area	★ Beacon, General
● Shoalest Sounding**	♦ Red Navigation Buoy
★ Beacon, General	◆ Green Navigation Buoy
■ Placement Area	■ -12' and above
□ Anchorage Area	□ -12' and below



Gage Reading: DM16: 3.9 MLG AVG  
 Sea Conditions: 1'-3'  
 Vessel Name: M/V TECHE  
 Survey Type: CONDITION, PPK  
 Sounding Frequency\*\*\*: HIGH



**NOTES:**  
 Horizontal Coordinate System:  
 North American Datum of 1983 (NAD83), projected to the State Plane Coordinate System (SPCS), Louisiana South Zone. Distance units in U.S. Survey Feet.  
 Vertical Datum:  
 Soundings are shown in feet and indicate depths below Mean Low Gulf (MLG).  
 Datum relationships at Baptiste Collette as of 01 May 2013:  
 0.0' MLLW (2002-2006) = 0.0' NAVD88 (2009.55) = 3.5' MLG  
 Distances on the GIWW, Chandeleur to Gulfport Route are shown at 1 mile intervals.  
 The location of navigation aids are base on and provided by the U.S. Coast Guard.  
 2013 Aerial Photography data source: GEOCLIP, Atlantic Group, LLC.  
 Reference is N.O.A.A. Navigation Chart No. 11363.  
 \*\* Shoalest Sounding per Quarter per Reach.  
 \*\*\* High frequency (200 kHz) survey data represents the first signal return at a sounding location and will include suspended solids, known as "fluff", if present. Low frequency (20 kHz) survey data normally penetrates through this "fluff" layer to depict elevations of consolidated bottom material. Low frequency accuracies may vary depending on channel conditions and fathometer settings.

**Sheet  
 Reference  
 Number  
 12 of 26**