

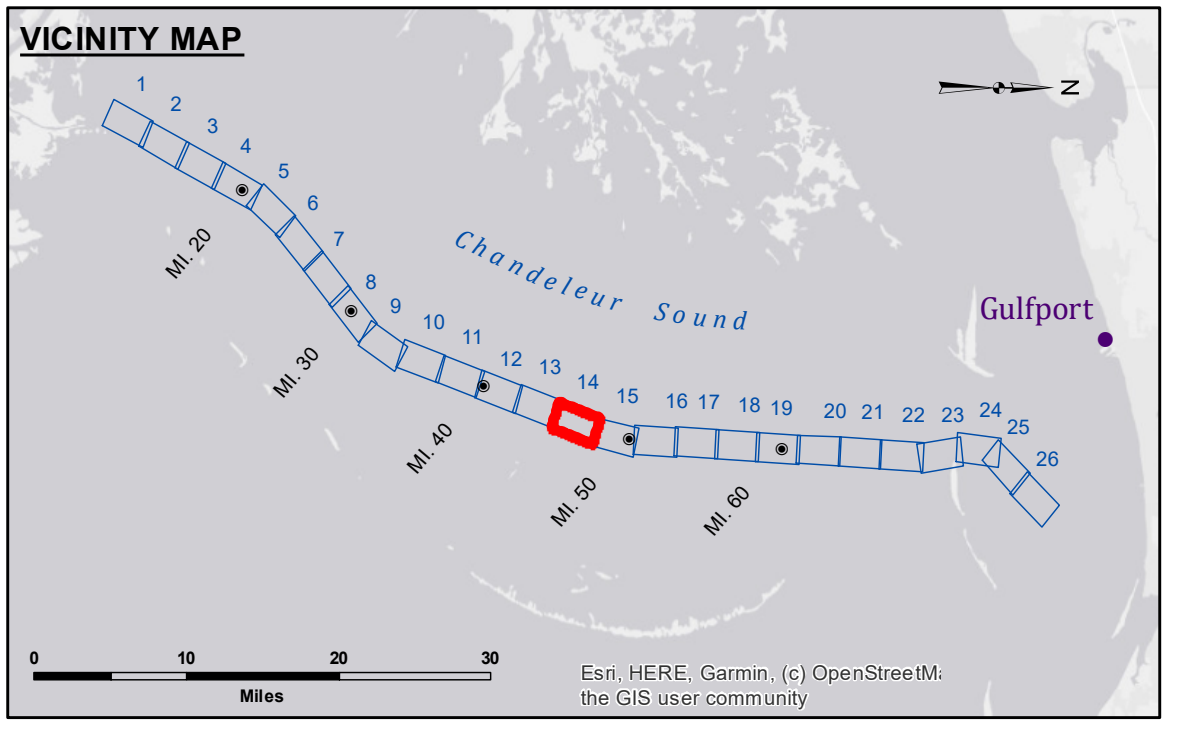
**DISCLAIMER:** The data represents the results of data collection processing for a specific US Army Corps of Engineers project. The data is only valid for its intended use, control, time and accuracy specifications. The user is responsible for the results. The application of the data for other than its intended purpose, the application of the data for other than its intended purpose, is not intended. Hydrographic survey data is subject to change rapidly due to several factors including but not limited to dredging, accretion, and other factors. The user is responsible for the accuracy of the data. The information depicted on this map represents the results of a survey conducted on the date of the survey. The user is responsible for the accuracy of the data. The information depicted on this map represents the results of a survey conducted on the date of the survey. The user is responsible for the accuracy of the data.

U.S. ARMY CORPS OF ENGINEERS NEW ORLEANS DISTRICT		
Submitted:	Surveyed By: LLB & SJR	Plotted By: AO
Recommended: Chief Survey Section	Checked By: AO	Checked By: AO
Approved:	Chief Waterways Maintenance Section	

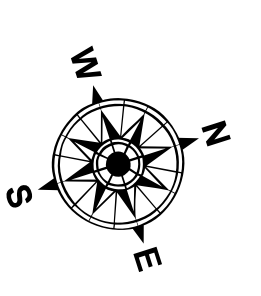
**GULF INTRACOASTAL WATERWAY  
CHANDELEUR ALT. ROUTE  
GC\_14\_B2G\_20201030\_CS\_POSTSTORM\_PRO  
30 October 2020**

**Sheet  
Reference  
Number  
14 of 26**

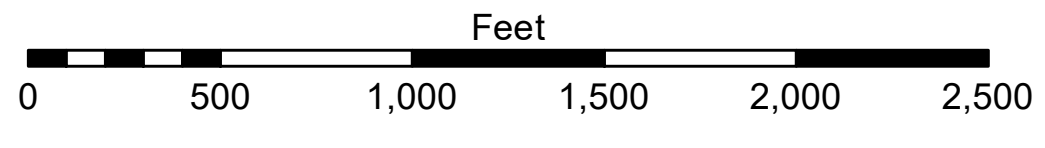
Revision Number:  
4.1-20191105



LEGEND		
- - - Federal Navigation Channel	○ Cable Area	□ Borrow Area
— Federal Navigation Center Line	■ Placement Area	● Shoalest Sounding**
— As-built Pipeline/Cable	□ Anchorage Area	☆ Beacon, General
..... Unconfirmed Pipeline/Cable	⊗ Obstruction Point	◆ Red Navigation Buoy
— Project Depth Contour	⚓ Wrecks-Submerged	◆ Green Navigation Buoy
		■ -12' and above
		□ -12' and below



Gage Reading: 1.0 MLLW @ DM 16 @ 0930  
 Sea Conditions: SLIGHT CHOP 2'- 3' SEAS  
 Vessel Name: TECHE  
 Survey Type: CONDITION, SB  
 Sounding Frequency\*\*\*: LOW



**NOTES:**  
 Horizontal Coordinate System:  
 North American Datum of 1983 (NAD83), projected to the State Plane  
 Coordinate System (SPCS), Louisiana South Zone. Distance units in U.S. Survey Feet.  
 Vertical Datum:  
 Soundings are shown in feet and indicate depths below Mean Lower Low Water (MLLW).  
 Datum relationships at Baptiste Collette as of 01 May 2013:  
 0.0' MLLW (2002-2006) = 0.0' NAVD88 (2009.55) = 3.5' MLG  
 Distances on the GWW, Chandeleur to Gulfport Route are shown  
 at 1 mile intervals.  
 The location of navigation aids are based on and provided by the U.S. Coast Guard.  
 2013 Aerial Photography data source: GEOCLIP, Atlantic Group, LLC.  
 Reference is N.O.A. Navigation Chart No. 11363.  
 \*\* Shoalest Sounding per Quarter per Reach.  
 \*\*\* High frequency (200 kHz) survey data represents the first signal return at a sounding  
 location and will include suspended solids, known as "fluff", if present. Low frequency (20 kHz)  
 survey data normally penetrates through this "fluff" layer to depict elevations of consolidated bottom  
 material. Low frequency accuracies may vary depending on channel conditions and fathometer  
 settings.