

Accession: The United States Government furnishes these data and the recipient accepts and uses them with the express understanding that the data are not to be used for any purpose other than that for which they were originally collected, and that the user is responsible for the results of any use of the data for other than its intended purpose.

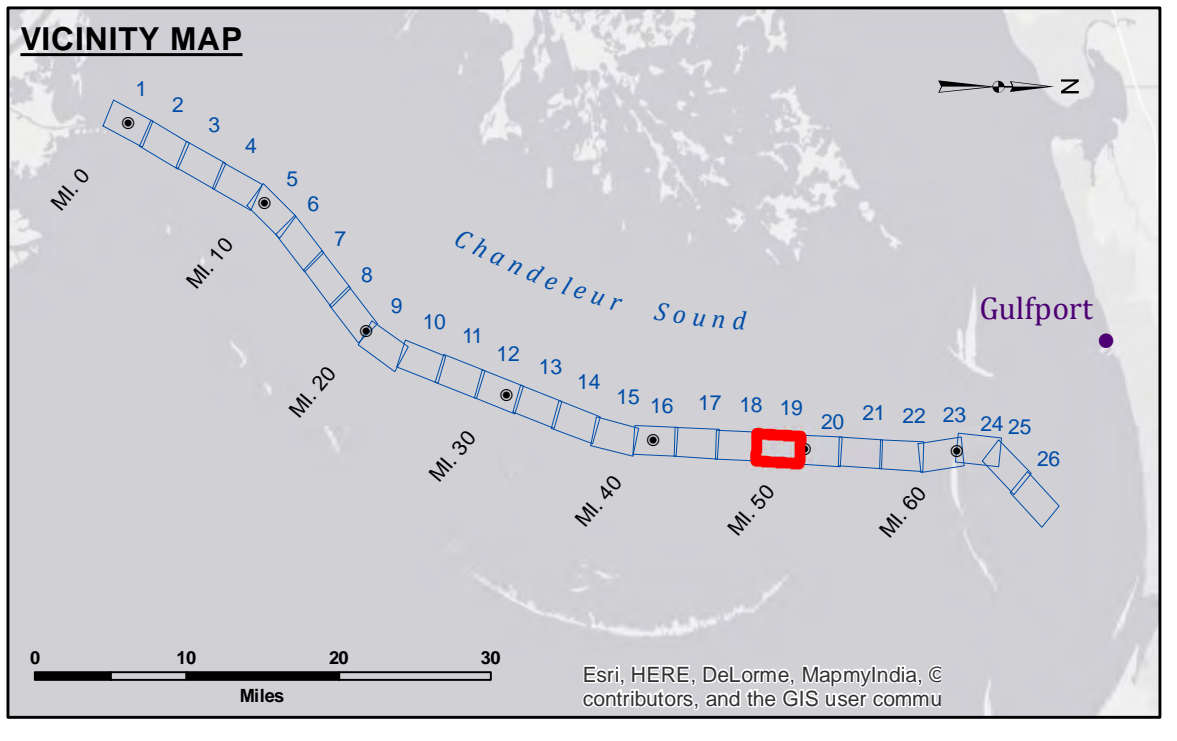
Disclaimer: Hydrographic survey data is subject to change due to several factors including but not limited to dredging, accretion, and other natural processes. The user is responsible for the results of any use of the data for other than its intended purpose. The information depicted on this map represents the results of a survey conducted on the date indicated and is not intended to represent the general condition existing at that time.

U.S. ARMY CORPS OF ENGINEERS NEW ORLEANS DISTRICT	
Submitted:	Surveyed By: AO/SPSR
Recommended:	Plotted By: AO
Approved:	Checked By: RM

**GULF INTRACOASTAL WATERWAY
CHANDELEUR ALT. ROUTE**
GC_19_B2G_20150311
11 March 2015

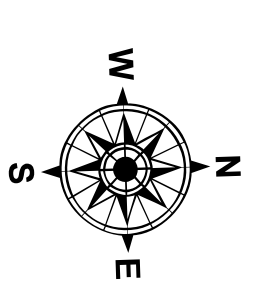
Sheet Reference Number
19 of 26

Revision Number:
3.6.1-2014-0429



LEGEND

--- Federal Navigation Channel	○ Cable Area	□ Borrow Area
— Federal Navigation Center Line	■ Placement Area	● Shoalest Sounding**
— As-built Pipeline/Cable	□ Anchorage Area	★ Beacon, General
..... Unconfirmed Pipeline/Cable	⊗ Obstruction Point	◆ Red Navigation Buoy
— Project Depth Contour	✈ Wrecks-Submerged	◆ Green Navigation Buoy
		■ -12' and above
		□ -12' and below



Gage Reading: DM16: 3.7 MLG AVG
Sea Conditions: 1'-3'
Vessel Name: M/V TECHE
Survey Type: CONDITION, PPK
Sounding Frequency***: HIGH

Vertical Datum:
Soundings are shown in feet and indicate depths below Mean Low Gulf (MLG).
Datum relationships at Baptiste Collette as of 01 May 2013:
0.0' MLLW (2002-2006) = 0.0' NAVD88 (2009.55) = 3.5' MLG

Distances on the GIWW, Chandeleur to Gulfport Route are shown at 1 mile intervals.

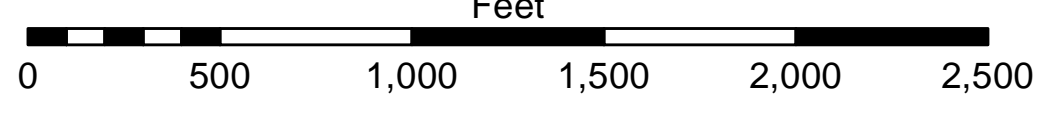
The location of navigation aids are base on and provided by the U.S. Coast Guard.

2013 Aerial Photography data source: GEOCLIP, Atlantic Group, LLC.

Reference is N.O.A.A. Navigation Chart No. 11373.

** Shoalest Sounding per Quarter per Reach.

*** High frequency (200 kHz) survey data represents the first signal return at a sounding location and will include suspended solids, known as "fluff", if present. Low frequency (20 kHz) survey data normally penetrates through this "fluff" layer to depict elevations of consolidated bottom material. Low frequency accuracies may vary depending on channel conditions and fathometer settings.



NOTES:
Horizontal Coordinate System:
North American Datum of 1983 (NAD83), projected to the State Plane Coordinate System (SPCS), Louisiana South Zone. Distance units in U.S. Survey Feet.

Vertical Datum:
Soundings are shown in feet and indicate depths below Mean Low Gulf (MLG).
Datum relationships at Baptiste Collette as of 01 May 2013:
0.0' MLLW (2002-2006) = 0.0' NAVD88 (2009.55) = 3.5' MLG

Distances on the GIWW, Chandeleur to Gulfport Route are shown at 1 mile intervals.

The location of navigation aids are base on and provided by the U.S. Coast Guard.

2013 Aerial Photography data source: GEOCLIP, Atlantic Group, LLC.

Reference is N.O.A.A. Navigation Chart No. 11373.

** Shoalest Sounding per Quarter per Reach.

*** High frequency (200 kHz) survey data represents the first signal return at a sounding location and will include suspended solids, known as "fluff", if present. Low frequency (20 kHz) survey data normally penetrates through this "fluff" layer to depict elevations of consolidated bottom material. Low frequency accuracies may vary depending on channel conditions and fathometer settings.