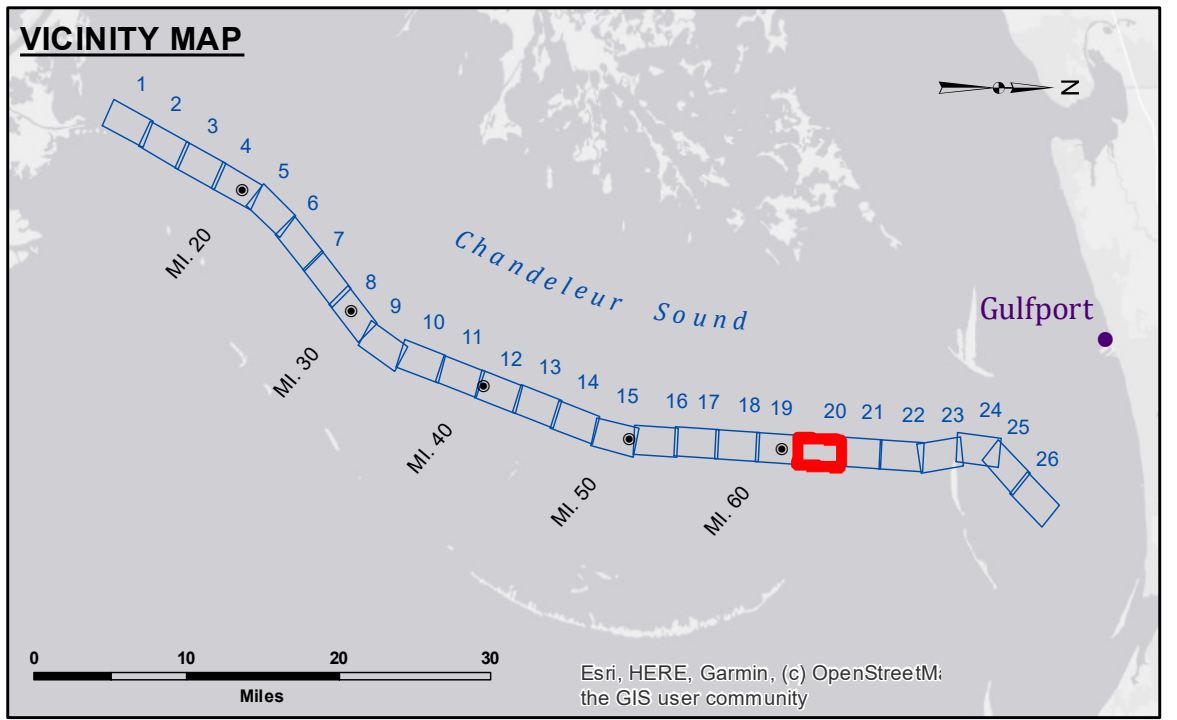


**Accession:** The United States Government furnishes these data and the recipient accepts and uses them with the express understanding that they are for official use only and are not to be distributed, copied, or reproduced in any form, or by any means, without the express written permission of the United States Government. The user is responsible for the results of any use of these data for other than the intended purpose. The application of the data for other than its intended purpose is not warranted. The data are subject to change without notice and the user is responsible for the results of any use of these data for other than the intended purpose. The user is responsible for the results of any use of these data for other than the intended purpose. The user is responsible for the results of any use of these data for other than the intended purpose.

U.S. ARMY CORPS OF ENGINEERS NEW ORLEANS DISTRICT	
Submitted:	SR,SP,AO
Recommended:	AO
Approved:	AO

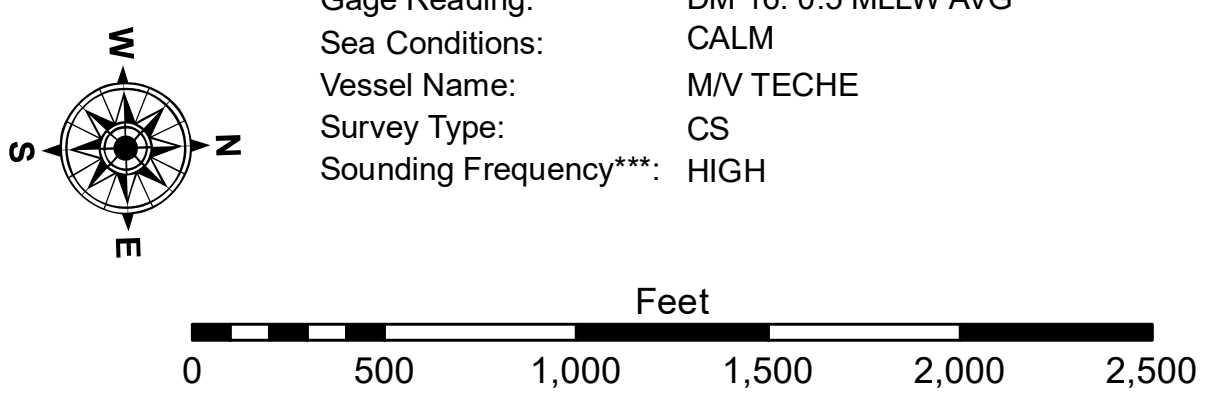
**GULF INTRACOASTAL WATERWAY  
CHANDELEUR ALT. ROUTE  
GC\_20\_B2G\_20200714\_CS  
14 July 2020**

**Sheet  
Reference  
Number  
20 of 26**



**LEGEND**

--- Federal Navigation Channel	○ Cable Area	□ Borrow Area
— Federal Navigation Center Line	□ Placement Area	● Shoalest Sounding**
— As-built Pipeline/Cable	□ Anchorage Area	★ Beacon, General
..... Unconfirmed Pipeline/Cable	⊗ Obstruction Point	◆ Red Navigation Buoy
— Project Depth Contour	⚓ Wrecks-Submerged	◆ Green Navigation Buoy
		■ -12' and above
		□ -12' and below



**NOTES:**  
Horizontal Coordinate System:  
North American Datum of 1983 (NAD83), projected to the State Plane Coordinate System (SPCS), Louisiana South Zone. Distance units in U.S. Survey Feet.  
Vertical Datum:  
Soundings are shown in feet and indicate depths below Mean Lower Low Water (MLLW).  
Datum relationships at Baptiste Collette as of 01 May 2013:  
0.0' MLLW (2002-2006) = 0.0' NAVD88 (2009.55) = 3.5' MLG  
Distances on the GIWW, Chandeleur to Gulfport Route are shown at 1 mile intervals.  
The location of navigation aids are base on and provided by the U.S. Coast Guard.  
2013 Aerial Photography data source: GEOCLIP, Atlantic Group, LLC.  
Reference is N.O.A. Navigation Chart No. 11373.  
\*\* Shoalest Sounding per Quarter per Reach.  
\*\*\* High frequency (200 kHz) survey data represents the first signal return at a sounding location and will include suspended solids, known as "fluff", if present. Low frequency (20 kHz) survey data normally penetrates through this "fluff" layer to depict elevations of consolidated bottom material. Low frequency accuracies may vary depending on channel conditions and fathometer settings.