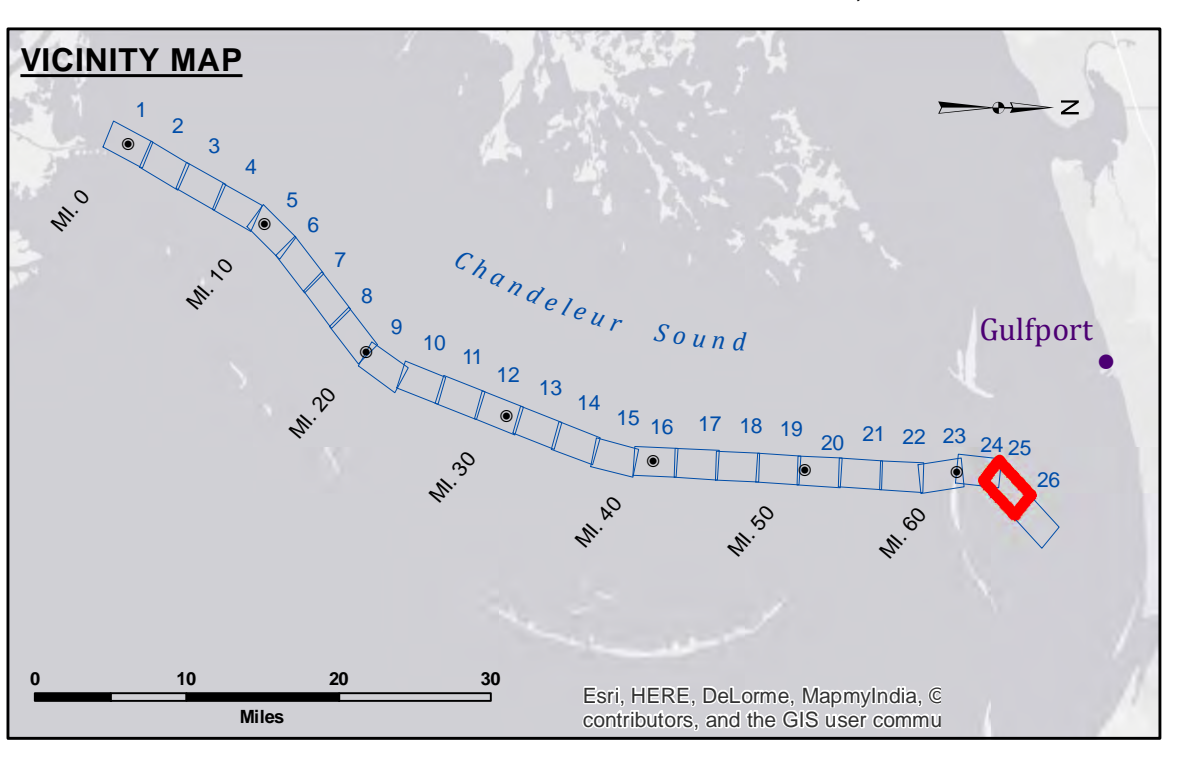


DISCLAIMER
The information depicted on this map represents the results of a survey conducted under contract to the U.S. Army Corps of Engineers. The information is provided for informational purposes only and is not intended for navigation. The user is responsible for the accuracy and reliability of the information. The U.S. Army Corps of Engineers is not liable for any damages or losses resulting from the use of this information. The information is provided as is and without warranty of any kind, express or implied, including but not limited to accuracy, reliability, or suitability for any particular purpose. The user is responsible for the accuracy and reliability of the information. The U.S. Army Corps of Engineers is not liable for any damages or losses resulting from the use of this information. The information is provided as is and without warranty of any kind, express or implied, including but not limited to accuracy, reliability, or suitability for any particular purpose. The user is responsible for the accuracy and reliability of the information. The U.S. Army Corps of Engineers is not liable for any damages or losses resulting from the use of this information.

Submitted:	Surveyed By: AO,SPSR	Planned By: AO	Checked By: RM
Recommended:	Chief, Survey Section		
Approved:	Chief, Waterways Maintenance Section		

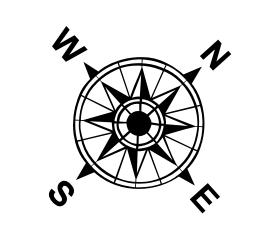
GULF INTRACOASTAL WATERWAY
GULFPORT SOUND
GC_25_GPS_20150310
10 March 2015

Sheet Reference Number
25 of 26

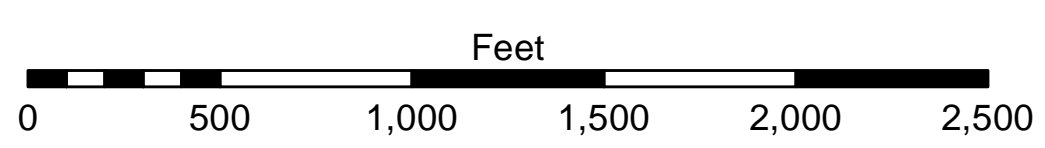


LEGEND

--- Federal Navigation Channel	○ Cable Area	□ Borrow Area	● Shoalest Sounding**
— Federal Navigation Center Line	□ Placement Area	☆ Beacon, General	☆ Red Navigation Buoy
— As-built Pipeline/Cable	⊗ Anchorage Area	★ Wrecks-Submerged	◇ Green Navigation Buoy
⋯ Unconfirmed Pipeline/Cable	⊗ Obstruction Point	■ -12' and above	□ -12' and below
— Project Depth Contour			



Gage Reading: DM16: 3.7 MLG AVG
Sea Conditions: 1'-3'
Vessel Name: M/V TECHE
Survey Type: CONDITION, PPK
Sounding Frequency***: HIGH



NOTES:
Horizontal Coordinate System:
North American Datum of 1983 (NAD83), projected to the State Plane Coordinate System (SPCS), Louisiana South Zone. Distance units in U.S. Survey Feet.
Vertical Datum:
Soundings are shown in feet and indicate depths below Mean Low Gulf (MLG).
Datum relationships at Baptiste Collette as of 01 May 2013:
0.0' MLLW (2002-2006) = 0.0' NAVD88 (2009.55) = 3.5' MLG
Distances on the GIWW, Chandeleur to Gulfport Route are shown at 1 mile intervals.
The location of navigation aids are base on and provided by the U.S. Coast Guard.
2013 Aerial Photography data source: GEOCLIP, Atlantic Group, LLC.
Reference is N.O.A. Navigation Chart No. 11373.
** Shoalest Sounding per Quarter per Reach.
*** High frequency (200 kHz) survey data represents the first signal return at a sounding location and will include suspended solids, known as "fluff", if present. Low frequency (20 kHz) survey data normally penetrates through this "fluff" layer to depict elevations of consolidated bottom material. Low frequency accuracies may vary depending on channel conditions and fathometer settings.