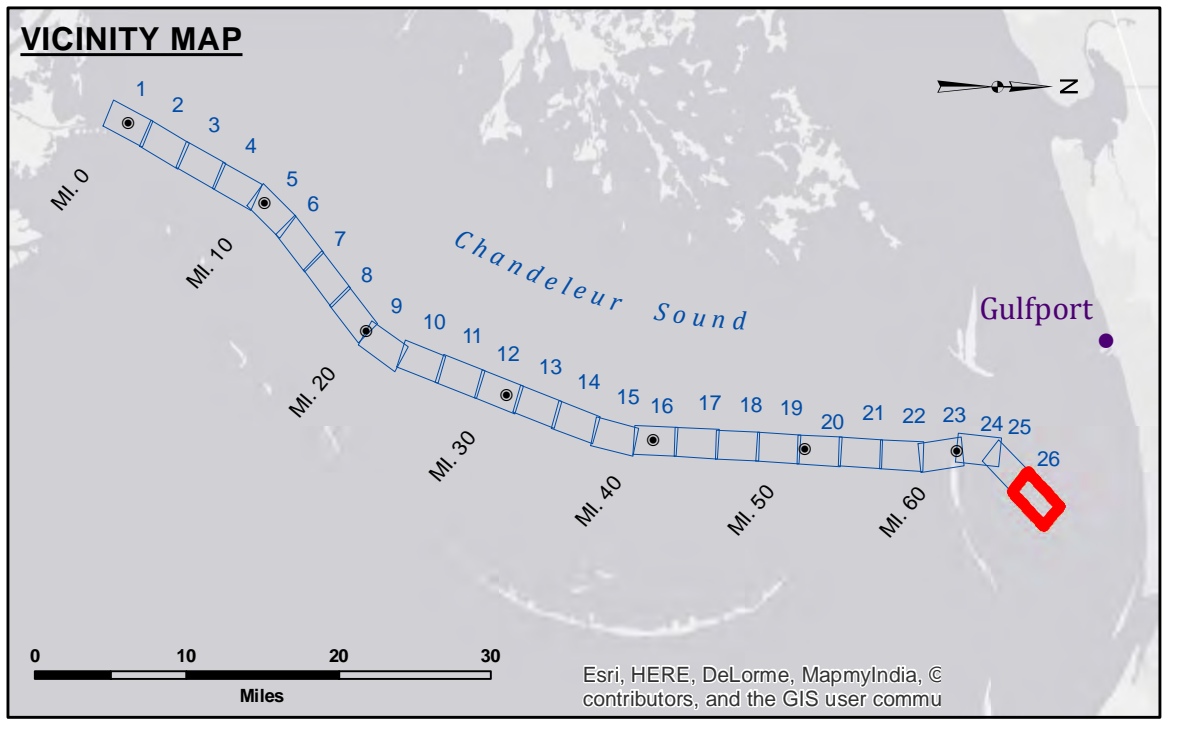


DISCLAIMER
 The information depicted on this map represents the results of a survey conducted by the U.S. Army Corps of Engineers. It is not intended to be used for any purpose other than that for which it was prepared. The user is responsible for the results of any application of the data for other than its intended purpose. The U.S. Army Corps of Engineers does not assume any liability for damages or injury resulting from the use of this information. The information depicted on this map represents the results of a survey conducted by the U.S. Army Corps of Engineers. It is not intended to be used for any purpose other than that for which it was prepared. The user is responsible for the results of any application of the data for other than its intended purpose. The U.S. Army Corps of Engineers does not assume any liability for damages or injury resulting from the use of this information.

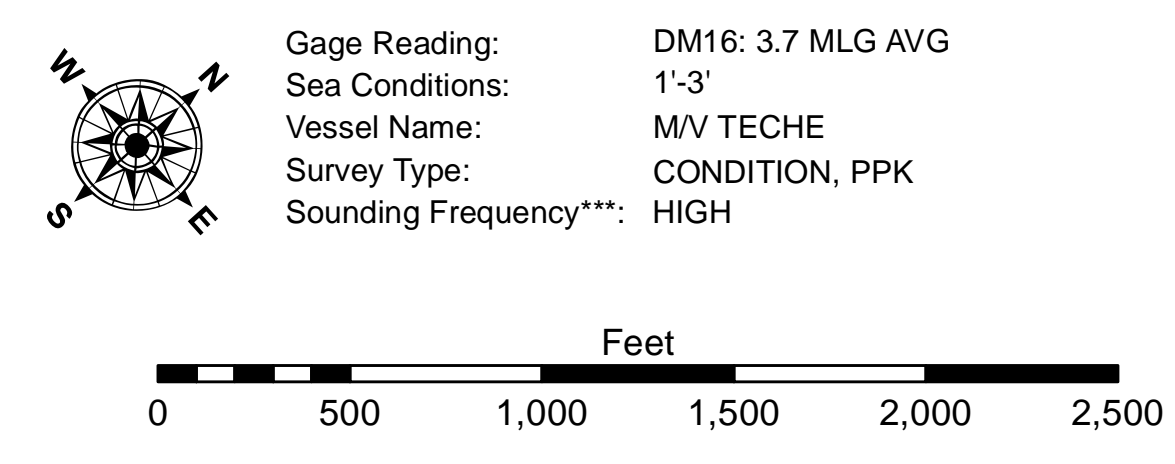
U.S. ARMY CORPS OF ENGINEERS NEW ORLEANS DISTRICT	
Submitted:	Surveyed By: AO/SPSR
Recommended: Chief, Survey Section	Placed By: AO
Approved: Chief, Waterways Maintenance Section	Checked By: RM

**GULF INTRACOASTAL WATERWAY
 GULFPORT SOUND
 GC_26_GPS_20150310
 10 March 2015**



LEGEND

--- Federal Navigation Channel	○ Cable Area	□ Borrow Area
— Federal Navigation Center Line	■ Placement Area	● Shoalest Sounding**
— As-built Pipeline/Cable	□ Anchorage Area	☆ Beacon, General
..... Unconfirmed Pipeline/Cable	⊗ Obstruction Point	◆ Red Navigation Buoy
— Project Depth Contour	✶ Wrecks-Submerged	◆ Green Navigation Buoy
		■ -12' and above
		□ -12' and below



NOTES:
 Horizontal Coordinate System:
 North American Datum of 1983 (NAD83), projected to the State Plane Coordinate System (SPCS), Louisiana South Zone. Distance units in U.S. Survey Feet.
 Vertical Datum:
 Soundings are shown in feet and indicate depths below Mean Low Gulf.
 Datum relationships at Baptiste Collette as of 01 May 2013:
 0.0' MLLW (2002-2006) = 0.0' NAVD88 (2009.55) = 3.5' MLG
 Distances on the GIWW, Chandeleur to Gulfport Route are shown at 1 mile intervals.
 The location of navigation aids are base on and provided by the U.S. Coast Guard.
 2013 Aerial Photography data source: GEOCLIP, Atlantic Group, LLC.
 Reference is N.O.A.A. Navigation Chart No. 11373.
 ** Shoalest Sounding per Quarter per Reach.
 *** High frequency (200 kHz) survey data represents the first signal return at a sounding location and will include suspended solids, known as "fluff", if present. Low frequency (20 kHz) survey data normally penetrates through this "fluff" layer to depict elevations of consolidated bottom material. Low frequency accuracies may vary depending on channel conditions and fathometer settings.

**Sheet
 Reference
 Number
 26 of 26**