



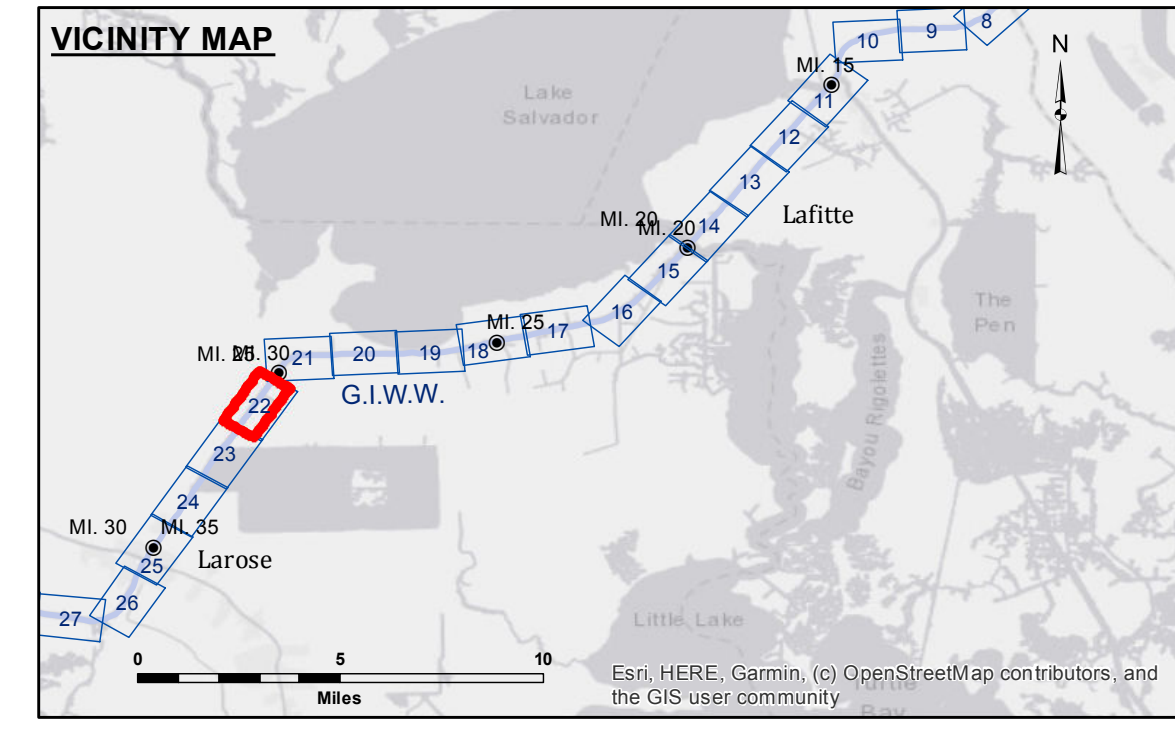
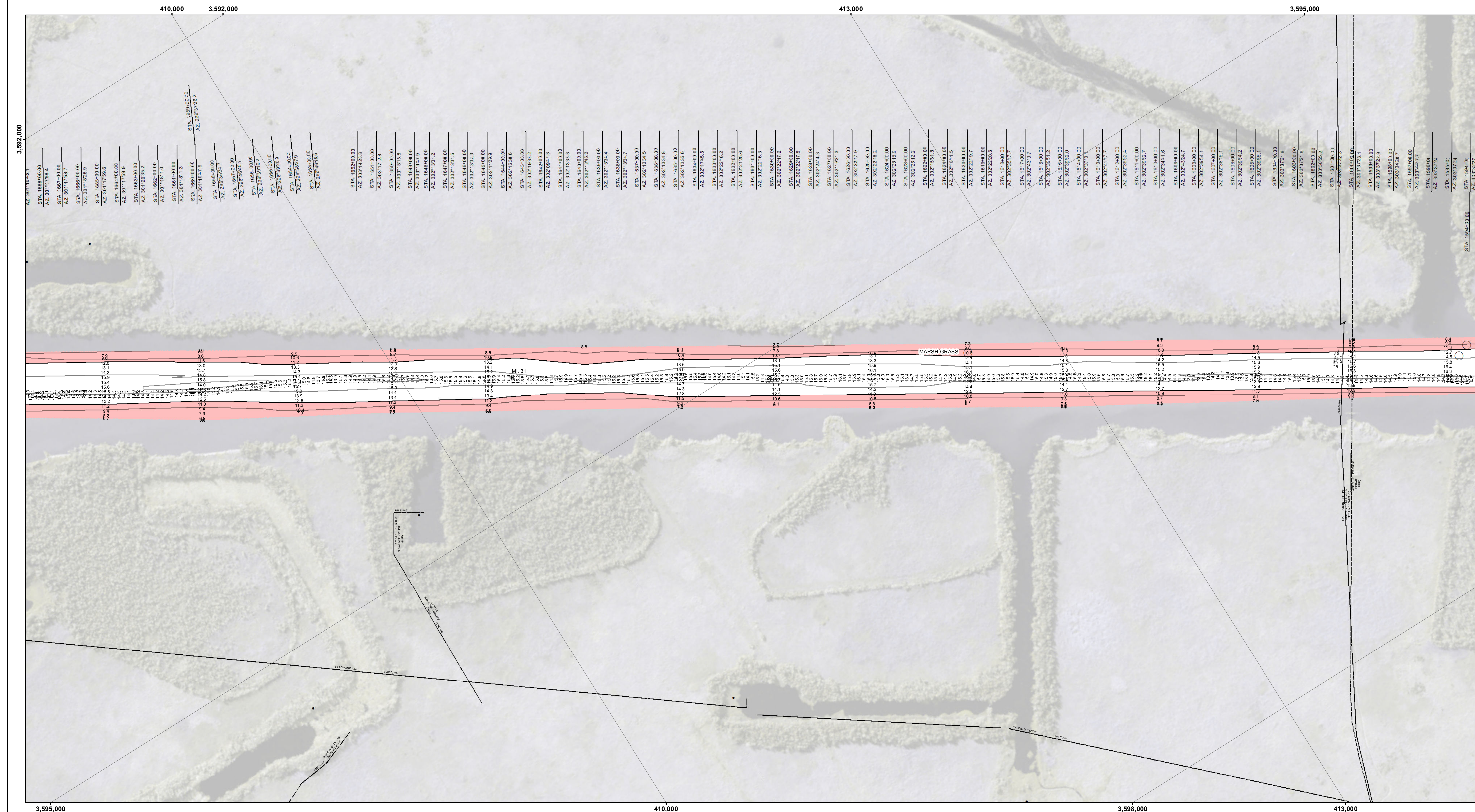
Accession: 20210229-AD
Project: GI_22_B2L_20211029_AD
Date: 29 October 2021

Submitted:	Surveyed By: SP,PM
Recommended:	Plotted By: AO
Approved:	Checked By: AC

GULF INTRACOASTAL WATERWAY
BARATARIA TO LAFOURCHE
GI_22_B2L_20211029_AD
29 October 2021

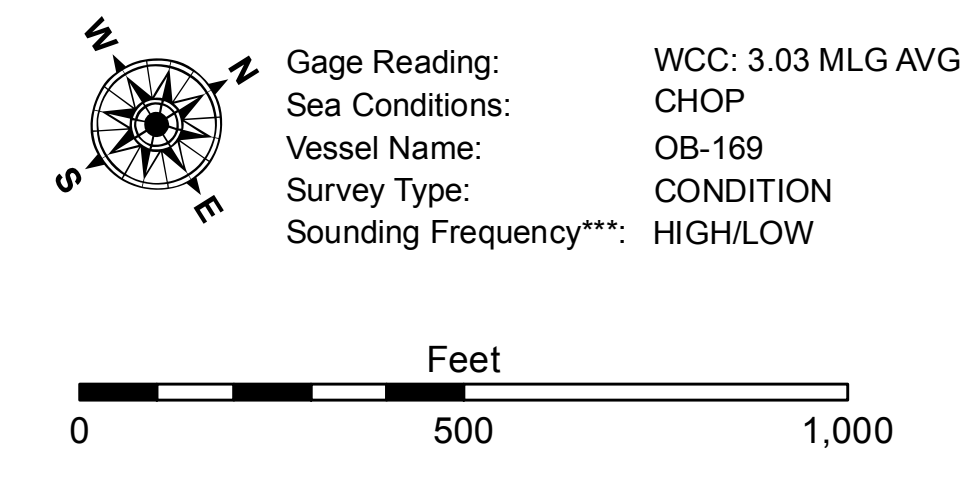
Sheet Reference Number
22 of 191

Revision Number:
 4.2-202104.20



LEGEND

--- Federal Navigation Channel	○ Cable Area	□ Borrow Area	■ -12' and above
— Federal Navigation Center Line	□ Placement Area	● Shoalest Sounding**	□ -12' and below
— As-built Pipeline/Cable	□ Anchorage Area	★ Beacon, General	
..... Unconfirmed Pipeline/Cable	⊗ Obstruction Point	◆ Red Navigation Buoy	
— Project Depth Contour	⚓ Wrecks-Submerged	◆ Green Navigation Buoy	



NOTES:
 Horizontal Coordinate System:
 North American Datum of 1983 (NAD83), projected to the State Plane
 Coordinate System (SPCS), Louisiana South Zone. Distance units in U.S. Survey Feet.
 Vertical Datum:
 Soundings are shown in feet and indicate depths below Mean Low Gulf Datum (MLG).
 Mile markers on the G.I.W.W. are shown in one mile intervals.
 The location of navigation aids are base on and provided by the U.S. Coast Guard.
 2017 Aerial Photography data source: NAIP. 1998 DOQQ Imagery shown in green from USGS.
 Reference is N.O.A.A. Navigation Chart No. 11365.
 ** Shoalest Sounding per Quarter per Reach.
 *** High frequency (200 kHz) survey data represents the first signal return at a sounding location and will include suspended solids, known as "fluff", if present. Low frequency (20 kHz) survey data normally penetrates through this "fluff" layer to depict elevations of consolidated bottom material. Low frequency accuracies may vary depending on channel conditions and fathometer settings.