



DISCLAIMER
The data represented on this map were collected using the methods of the Corps of Engineers and are not intended to be used for any purpose other than that for which they were collected. The user is responsible for the results of any application of the data for other than the intended purpose. The Corps of Engineers is not liable for any damage, injury, or loss resulting from the use of this data for any purpose other than that for which they were collected. The U.S. Army Corps of Engineers is not responsible for the accuracy of the data or for any damage, injury, or loss resulting from the use of this data for any purpose other than that for which they were collected. This data is intended for U.S. Army Corps of Engineers internal use. Product names are used for identification only and do not constitute a recommendation or endorsement by the U.S. Army Corps of Engineers.

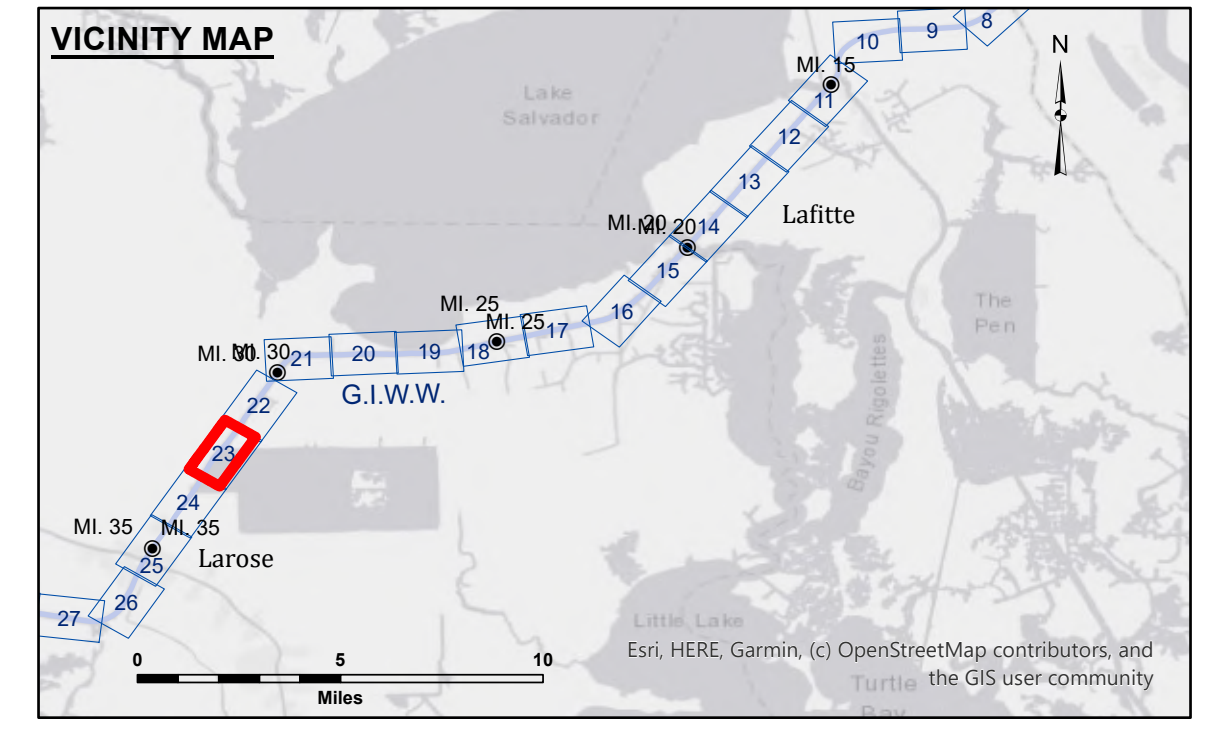
DISCLAIMER
The United States Government furnishes these data and the recipient accepts and uses them with the express understanding that the data are not intended to be used for any purpose other than that for which they were collected. The user is responsible for the results of any application of the data for other than the intended purpose. The Corps of Engineers is not liable for any damage, injury, or loss resulting from the use of this data for any purpose other than that for which they were collected. The U.S. Army Corps of Engineers is not responsible for the accuracy of the data or for any damage, injury, or loss resulting from the use of this data for any purpose other than that for which they were collected. This data is intended for U.S. Army Corps of Engineers internal use. Product names are used for identification only and do not constitute a recommendation or endorsement by the U.S. Army Corps of Engineers.

| | |
|--|-------------------|
| U.S. ARMY CORPS OF ENGINEERS NEW ORLEANS DISTRICT | |
| Submitted: | Surveyed By: PMLT |
| Recommended: | Plotted By: JHT |
| Approved: | Checked By: JH |

**GULF INTRACOASTAL WATERWAY
BARATARIA TO LAFOURCHE
GI_23_B2L_20260306_CS
06 March 2026**

**Sheet Reference Number
23 of 191**

Revision Number: 5/26/02 19-5/26/02 19



LEGEND

| | | | |
|----------------------------------|---------------------|-------------------------|------------------|
| --- Federal Navigation Channel | ○ Cable Area | □ Borrow Area | ■ -12' and above |
| — Federal Navigation Center Line | □ Placement Area | ● Shoalest Sounding** | □ -12' and below |
| — As-built Pipeline/Cable | □ Anchorage Area | ★ Beacon, General | |
| Unconfirmed Pipeline/Cable | ⊗ Obstruction Point | ◆ Red Navigation Buoy | |
| — Project Depth Contour | ⚓ Wrecks-Submerged | ◆ Green Navigation Buoy | |

NOTES:

Horizontal Coordinate System: North American Datum of 1983 (NAD83), projected to the State Plane Coordinate System (SPCS), Louisiana South Zone. Distance units in U.S. Survey Feet.

Vertical Datum: Soundings are shown in feet and indicate depths below Mean Low Gulf Datum (MLG).

Mile markers on the G.I.W.W. are shown in one mile intervals.

The location of navigation aids are based on and provided by the U.S. Coast Guard.

2021 Aerial Photography data source: NAIP

Reference is N.O.A.A. Navigation Chart No. 11365.

** Shoalest Sounding per Quarter per Reach.

*** High frequency (200 kHz) survey data represents the first signal return at a sounding location and will include suspended solids, known as "fluff", if present. Low frequency (20 kHz) survey data normally penetrates through this "fluff" layer to depict elevations of consolidated bottom material. Low frequency accuracies may vary depending on channel conditions and fathometer settings.

Gage Reading: VRN: 3.24 MLG AVG
Sea Conditions: CALM
Vessel Name: OB169
Survey Type: CS
Sounding Frequency***: 24KHZ

Scale: 0 to 1,000 Feet

Office of Coast Survey National Oceanic and Atmospheric Administration (NOAA) U.S. Department of Commerce