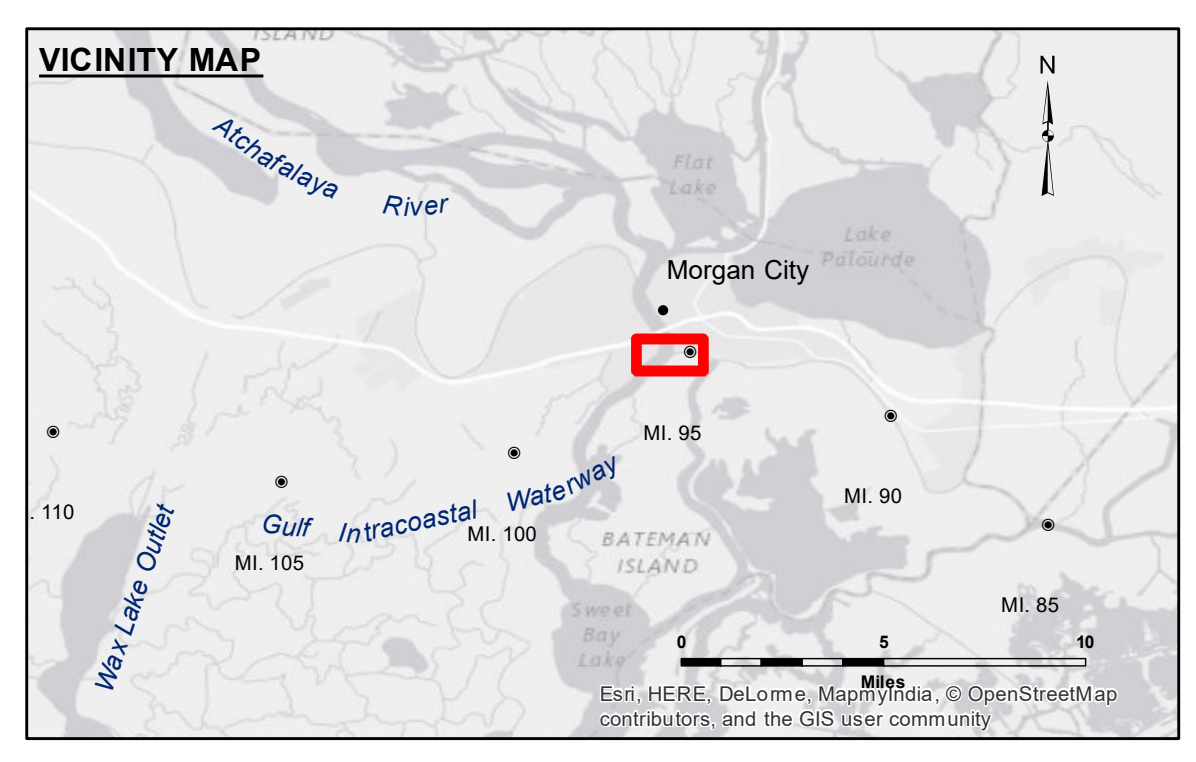
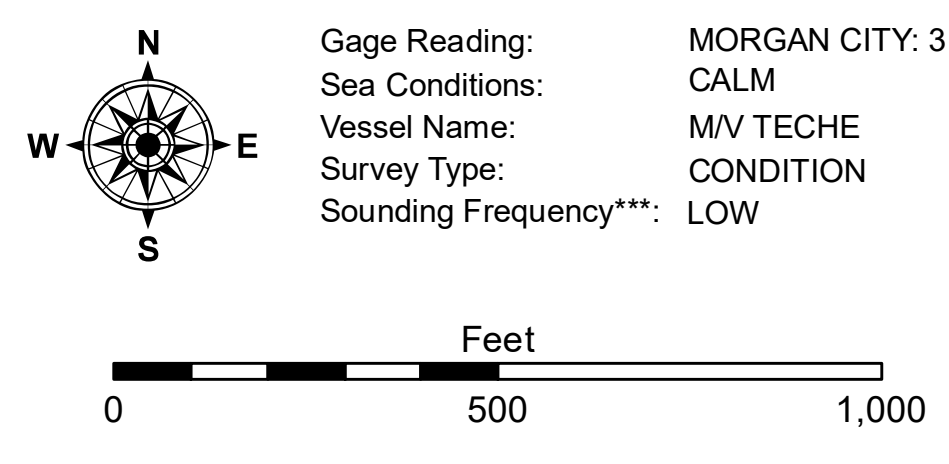


DISCLAIMER: The United States Government furnishes these data and the recipient accepts and uses them with the express understanding that the Government makes no warranty, either expressed or implied, concerning the accuracy, completeness, reliability, or suitability for any particular purpose of the information furnished. The user is responsible for the results of the application of the data for other than its intended purpose. The application of the data for other than its intended purpose may result in injury or damage to persons or property. The user assumes all liability for any use of the data for other than its intended purpose. The information depicted on this map represents the results of a survey conducted on or after the date of the survey. The user is responsible for the results of the application of the data for other than its intended purpose. The information depicted on this map represents the results of a survey conducted on or after the date of the survey. The user is responsible for the results of the application of the data for other than its intended purpose.

Submitted:	Checked By:
Recommended:	Checked By:
Approved:	Checked By:



LEGEND			
--- Federal Navigation Channel	○ Cable Area	□ Borrow Area	■ -12' and above
— Federal Navigation Center Line	□ Placement Area	● Shoalest Sounding**	□ -12' and below
— As-built Pipeline/Cable	□ Anchorage Area	☆ Beacon, General	
..... Unconfirmed Pipeline/Cable	⊗ Obstruction Point	◆ Red Navigation Buoy	
— Project Depth Contour	⚓ Wrecks-Submerged	◆ Green Navigation Buoy	



NOTES:
 Horizontal Coordinate System: North American Datum of 1983 (NAD83), projected to the State Plane Coordinate System (SPCS), Louisiana South Zone. Distance units in U.S. Survey Feet.
 Vertical Datum: Soundings are shown in feet and indicate depths below Mean Low Gulf Datum (MLG). Datum Relationships for Lower Atchafalaya River at Morgan City (03780) as of May 2014: 0.0' NAVD83 (2009.55) = 2.05' MLG.
 The location of navigation aids are based on and provided by the U.S. Coast Guard.
 2010 Aerial Photography data source: NAIP, 1998 DOQQ imagery shown in green from USGS.
 Reference is N.O.A.A. Navigation Chart No. 11355.
 ** Shoalest Sounding per Quarter per Reach.
 *** High frequency (200 kHz) survey data represents the first signal return at a sounding location and will include suspended solids, known as "fluff", if present. Low frequency (20 kHz) survey data normally penetrates through this "fluff" layer to depict elevations of consolidated bottom material. Low frequency accuracies may vary depending on channel conditions and fathometer settings.

GULF INTRACOASTAL WATERWAY
 20 GRAND POINT
 GL_67_BBW_20171205_CS
 05 December 2017

Sheet Reference Number
 67 of 191