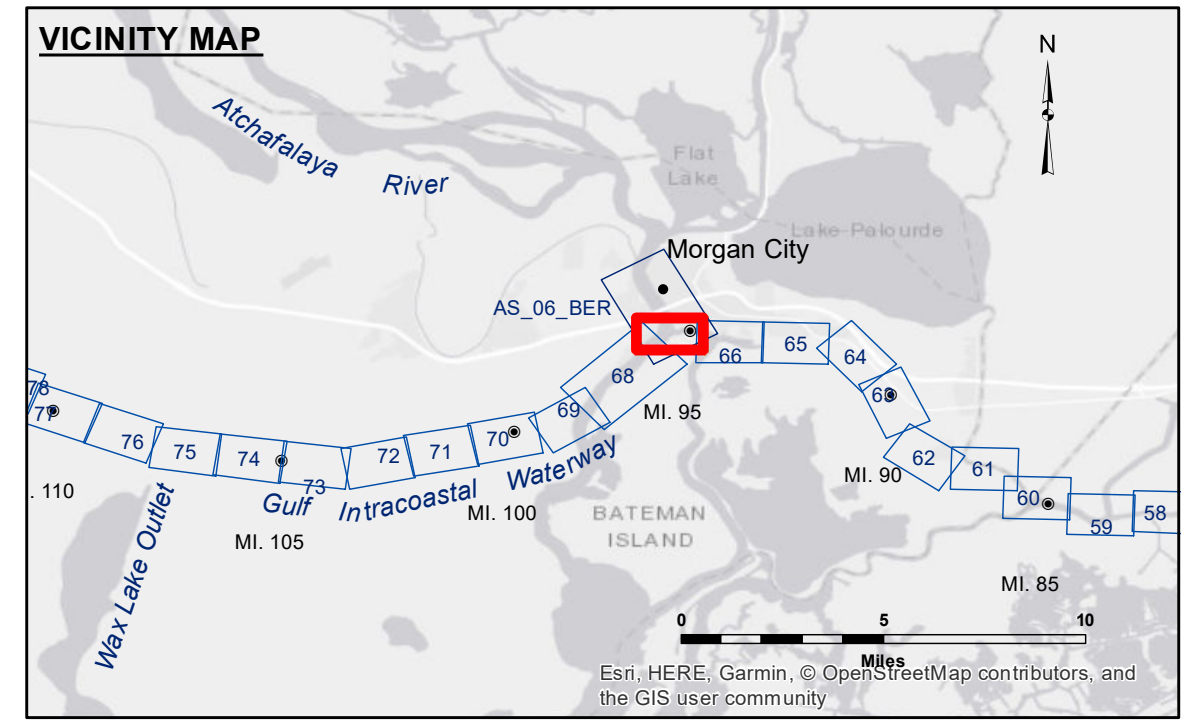


Accession: The United States Government furnishes these data and the recipient accepts and uses them with the express understanding that they are not to be used for any purpose other than that for which they were originally prepared. The user is responsible for the results of any application of the data for other than its intended purpose.

Disclaimer: Hydrographic survey data is subject to change due to several factors including but not limited to dredging, accretion, and scour. The Corps of Engineers does not warrant the accuracy of the data for any purpose other than that for which it was collected. The information depicted on this map represents the results of a survey conducted on or about the date of the survey and is not to be used for any purpose other than that for which it was collected.

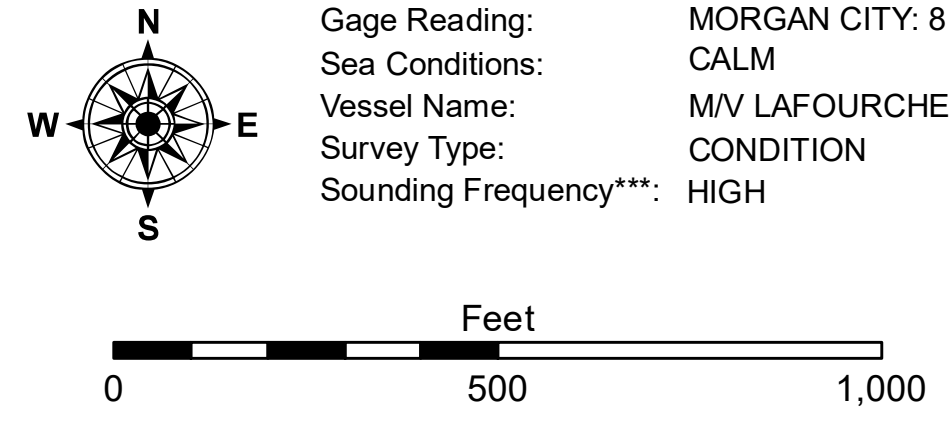
| | |
|--------------|--------------|
| Submitted: | Surveyed By: |
| Recommended: | JH/PS |
| Approved: | Plotted By: |
| | BD |
| | Checked By: |
| | AC |

GULF INTRACOASTAL WATERWAY
20 GRAND POINT
GL_67_BBW_20190507_CS
07 May 2019



LEGEND

| | | | |
|----------------------------------|---------------------|-------------------------|------------------|
| --- Federal Navigation Channel | ○ Cable Area | □ Borrow Area | ■ -12' and above |
| — Federal Navigation Center Line | □ Placement Area | ● Shoalest Sounding** | □ -12' and below |
| — As-built Pipeline/Cable | ⊗ Anchorage Area | ★ Beacon, General | |
| Unconfirmed Pipeline/Cable | ⊗ Obstruction Point | ◆ Red Navigation Buoy | |
| — Project Depth Contour | ⊗ Wrecks-Submerged | ◆ Green Navigation Buoy | |



NOTES:
 Horizontal Coordinate System:
 North American Datum of 1983 (NAD83), projected to the State Plane Coordinate System (SPCS), Louisiana South Zone. Distance units in U.S. Survey Feet.
 Vertical Datum:
 Soundings are shown in feet and indicate depths below Mean Low Gulf Datum (MLG).
 Datum Relationships for Lower Atchafalaya River at Morgan City (03780) as of 2017:
 0.0' NAVD83 (2009.55) = 1.89' MLG
 The location of navigation aids are based on and provided by the U.S. Coast Guard.
 2015 Aerial Photography data source: NAIP, 1998 DOQQ imagery shown in green from USGS.
 Reference is N.O.A.A. Navigation Chart No. 11355.
 ** Shoalest Sounding per Quarter per Reach.
 *** High frequency (200 kHz) survey data represents the first signal return at a sounding location and will include suspended solids, known as "fluff", if present. Low frequency (20 kHz) survey data normally penetrates through this "fluff" layer to depict elevations of consolidated bottom material. Low frequency accuracies may vary depending on channel conditions and fathometer settings.

Sheet Reference Number
67 of 191
 Revision Number:
 3.13-20160811