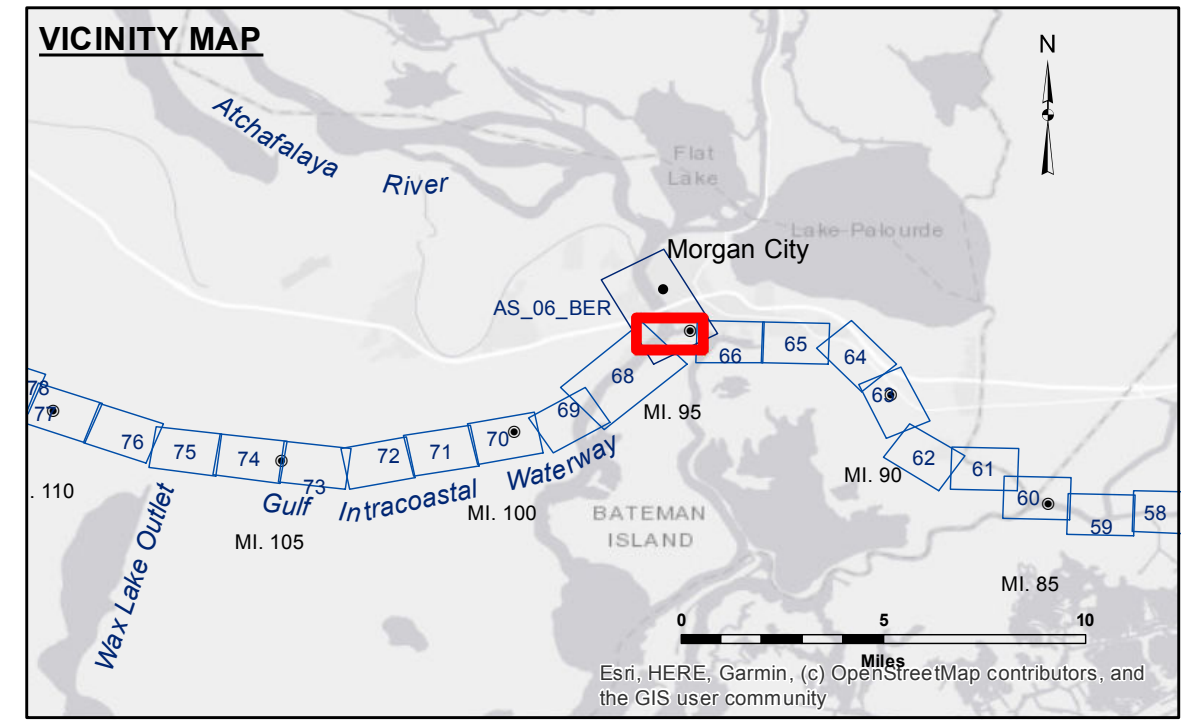


Accession: The United States Government furnishes these data and the recipient accepts and uses them with the express understanding that they are for official use only and that they are not to be distributed, reproduced, or used for any purpose other than that for which they were provided. The user is responsible for the results of any use of these data. The application of the data for other than its intended purpose is at the user's risk. The Corps of Engineers does not warrant the accuracy of the data for other than its intended purpose. Data contained in this report are subject to change without notice. The Corps of Engineers does not assume any liability for errors or omissions in this report. The Corps of Engineers does not assume any liability for errors or omissions in this report. The Corps of Engineers does not assume any liability for errors or omissions in this report.

Submitted:	Surveyed By:
Recommended:	RYLAND HOSHMAN
Approved:	Plotted By:
Chief, Waterways Maintenance Section	BD
	Checked By:
	AC



LEGEND

--- Federal Navigation Channel	○ Cable Area	□ Borrow Area	■ -12' and above
— Federal Navigation Center Line	□ Placement Area	● Shoalest Sounding**	□ -12' and below
— As-built Pipeline/Cable	□ Anchorage Area	☆ Beacon, General	
..... Unconfirmed Pipeline/Cable	⊗ Obstruction Point	◆ Red Navigation Buoy	
— Project Depth Contour	⚓ Wrecks-Submerged	◆ Green Navigation Buoy	

Gage Reading: MORGAN CITY: 6.8 MLG
Sea Conditions: CALM
Vessel Name: OB-189
Survey Type: CONDITION
Sounding Frequency*:** HIGH

Vertical Datum:
 Soundings are shown in feet and indicate depths below Mean Low Gulf Datum (MLG).
 Datum Relationships for Lower Atchafalaya River at Morgan City (03780) as of 2017:
 0.0' NAVD83 (2009.55) = 1.89' MLG

The location of navigation aids are based on and provided by the U.S. Coast Guard.
 2015 Aerial Photography data source: NAIP, 1998 DOQQ imagery shown in green from USGS.
 Reference is N.O.A.A. Navigation Chart No. 11355.
 ** Shoalest Sounding per Quarter per Reach.
 *** High frequency (200 kHz) survey data represents the first signal return at a sounding location and will include suspended solids, known as "fluff", if present. Low frequency (20 kHz) survey data normally penetrates through this "fluff" layer to depict elevations of consolidated bottom material. Low frequency accuracies may vary depending on channel conditions and fathometer settings.

GULF INTRACOASTAL WATERWAY
20 GRAND POINT
GL_67_BBW_20200603_CS
03 June 2020

Sheet Reference Number
67 of 191