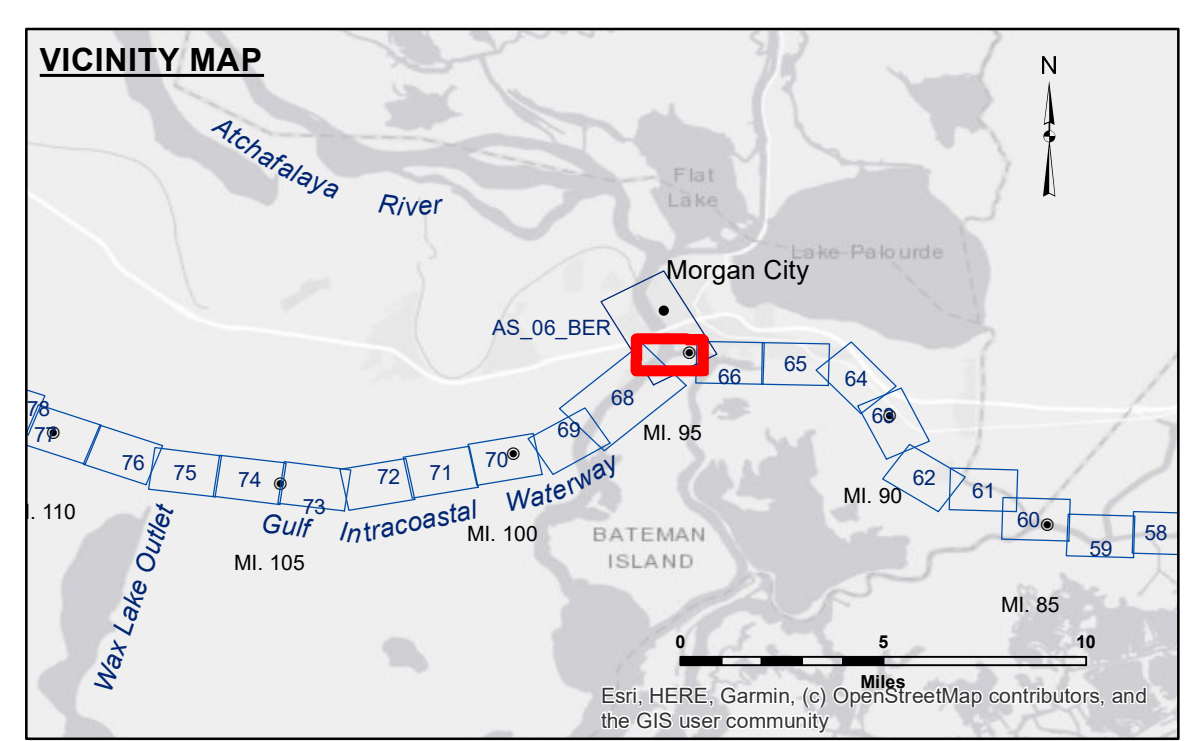


Access/Availability: The data represents the results of data collection/processing for a specific US Army Corps of Engineers project. It is only valid for its intended use, control, time and accuracy specifications. The user is responsible for the results of the application of the data for other than its intended purpose.

Data: Constants Hydrographic survey data is subject to change due to several factors including but not limited to changing hydrographic conditions when developing after the date of the survey. The user is responsible for the results of the data. The information depicted on this map represents the results of a survey conducted on the date shown. It is not intended to represent the general condition existing at that time.

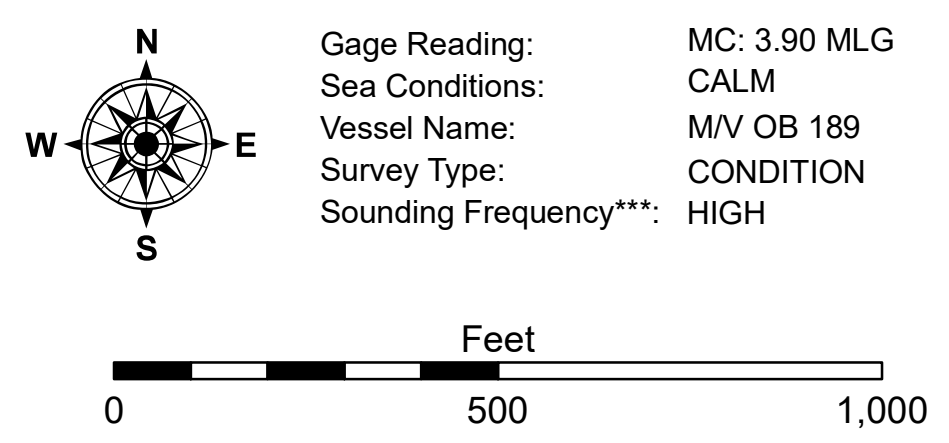
Submitted:	Surveyed By:
Recommended:	RYLAND/HOSHMAN
Approved:	Placed By:
Chief, Survey Section	AO
Chief, Waterways Maintenance Section	Checked By:
	AO

GULF INTRACOASTAL WATERWAY
20 GRAND POINT
GL_67_BBW_20201021_CS
21 October 2020



LEGEND

--- Federal Navigation Channel	○ Cable Area	□ Borrow Area	■ -12' and above
— Federal Navigation Center Line	□ Placement Area	● Shoalest Sounding**	□ -12' and below
— As-built Pipeline/Cable	□ Anchorage Area	★ Beacon, General	
..... Unconfirmed Pipeline/Cable	⊗ Obstruction Point	◆ Red Navigation Buoy	
— Project Depth Contour	⚓ Wrecks-Submerged	◆ Green Navigation Buoy	



NOTES:
 Horizontal Coordinate System:
 North American Datum of 1983 (NAD83), projected to the State Plane Coordinate System (SPCS), Louisiana South Zone. Distance units in U.S. Survey Feet.
 Vertical Datum:
 Soundings are shown in feet and indicate depths below Mean Low Gulf Datum (MLG). Datum Relationships for Lower Atchafalaya River at Morgan City (03780) as of 2017: 0.0' NAVD88 (2009.55) = 1.89' MLG
 The location of navigation aids are base on and provided by the U.S. Coast Guard.
 2015 Aerial Photography data source: NAIP, 1998 DOQQ imagery shown in green from USGS.
 Reference is N.O.A.A. Navigation Chart No. 11355.
 ** Shoalest Sounding per Quarter per Reach.
 *** High frequency (200 kHz) survey data represents the first signal return at a sounding location and will include suspended solids, known as "fluff", if present. Low frequency (20 kHz) survey data normally penetrates through this "fluff" layer to depict elevations of consolidated bottom material. Low frequency accuracies may vary depending on channel conditions and fathometer settings.

Sheet Reference Number
67 of 191
 Revision Number:
 4.1-2019115