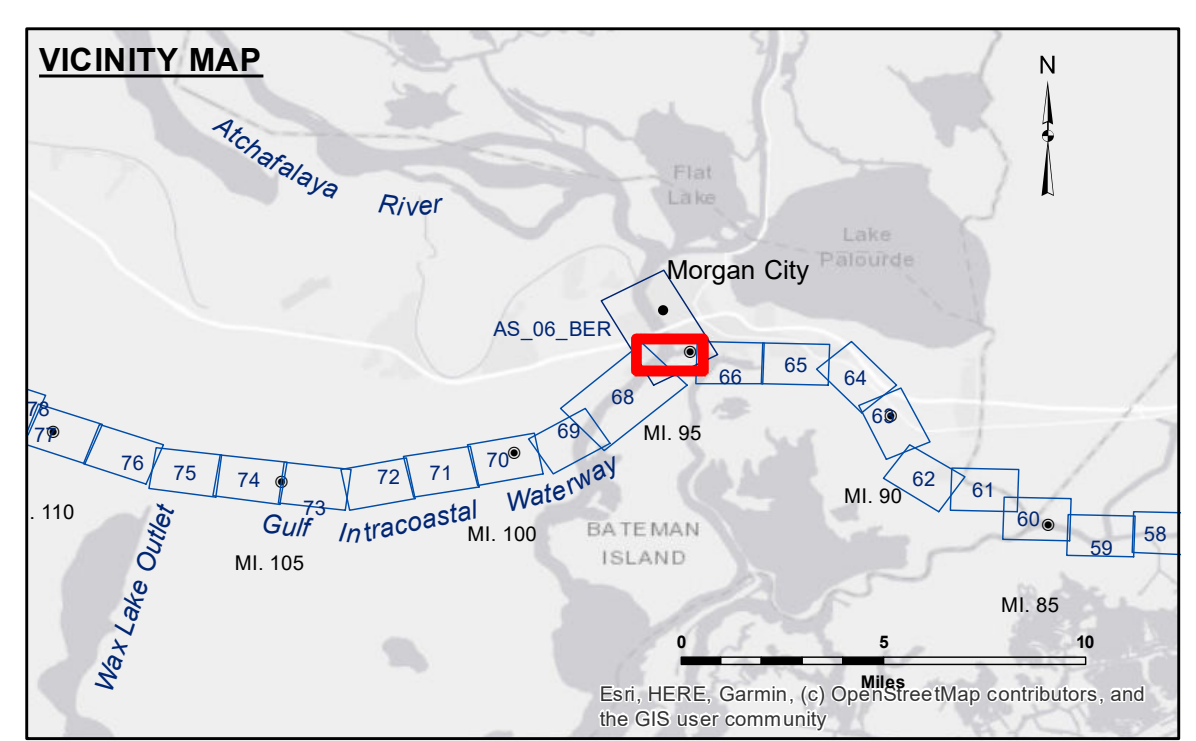


**DISCLAIMER:** The data represents the results of data collection processing for a specific US Army Corps of Engineers project. The data is not intended for use in any other project. It is only valid for its intended use, control, time and accuracy specifications. The user is responsible for the results. The user must verify the application of the data for other than its intended purpose.

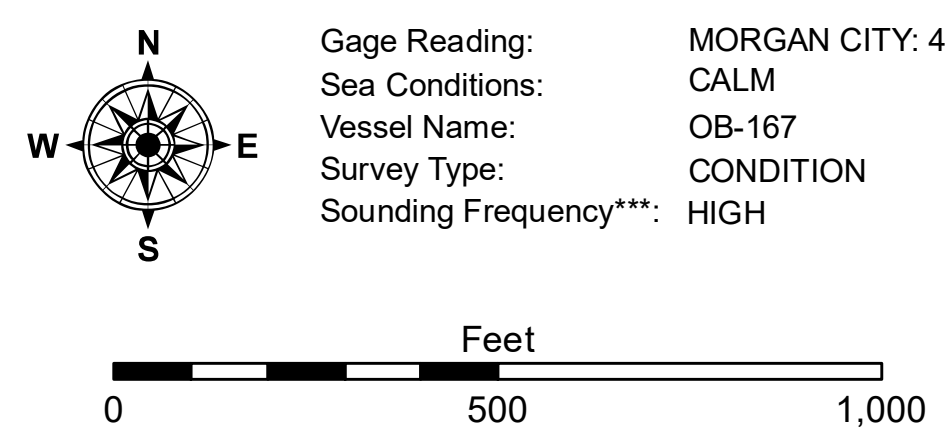
**Data Accuracy:** Hydrographic survey data is subject to change rapidly due to several factors including but not limited to dredging, sedimentation, and channel migration. The user must verify the data for the specific project and the hydrographic conditions when developed after the date of the survey. The user must verify the data for the specific project and the hydrographic conditions when developed after the date of the survey. The user must verify the data for the specific project and the hydrographic conditions when developed after the date of the survey.

Submitted:	RYLAND/MOLLERE
Recommended:	BD
Approved:	AC



**LEGEND**

--- Federal Navigation Channel	○ Cable Area	□ Borrow Area	■ -12' and above
— Federal Navigation Center Line	□ Placement Area	● Shoalest Sounding**	□ -12' and below
— As-built Pipeline/Cable	□ Anchorage Area	☆ Beacon, General	
..... Unconfirmed Pipeline/Cable	⊗ Obstruction Point	◆ Red Navigation Buoy	
— Project Depth Contour	⚓ Wrecks-Submerged	◆ Green Navigation Buoy	



**NOTES:**  
 Horizontal Coordinate System: North American Datum of 1983 (NAD83), projected to the State Plane Coordinate System (SPCS), Louisiana South Zone. Distance units in U.S. Survey Feet.  
 Vertical Datum: Soundings are shown in feet and indicate depths below Mean Low Gulf Datum (MLG). Datum Relationships for Lower Atchafalaya River at Morgan City (03780) as of 2017: 0.0' NAVD83 (2009.55) = 1.89' MLG.  
 The location of navigation aids are based on and provided by the U.S. Coast Guard.  
 2015 Aerial Photography data source: NAIP, 1998 DOQQ imagery shown in green from USGS.  
 Reference is N.O.A.A. Navigation Chart No. 11355.  
 \*\* Shoalest Sounding per Quarter per Reach.  
 \*\*\* High frequency (200 kHz) survey data represents the first signal return at a sounding location and will include suspended solids, known as "fluff", if present. Low frequency (20 kHz) survey data normally penetrates through this "fluff" layer to depict elevations of consolidated bottom material. Low frequency accuracies may vary depending on channel conditions and fathometer settings.

**GULF INTRACOASTAL WATERWAY  
 20 GRAND POINT  
 GL\_67\_BBW\_20220610\_CS  
 10 June 2022**

**Sheet  
 Reference  
 Number  
 67 of 191**