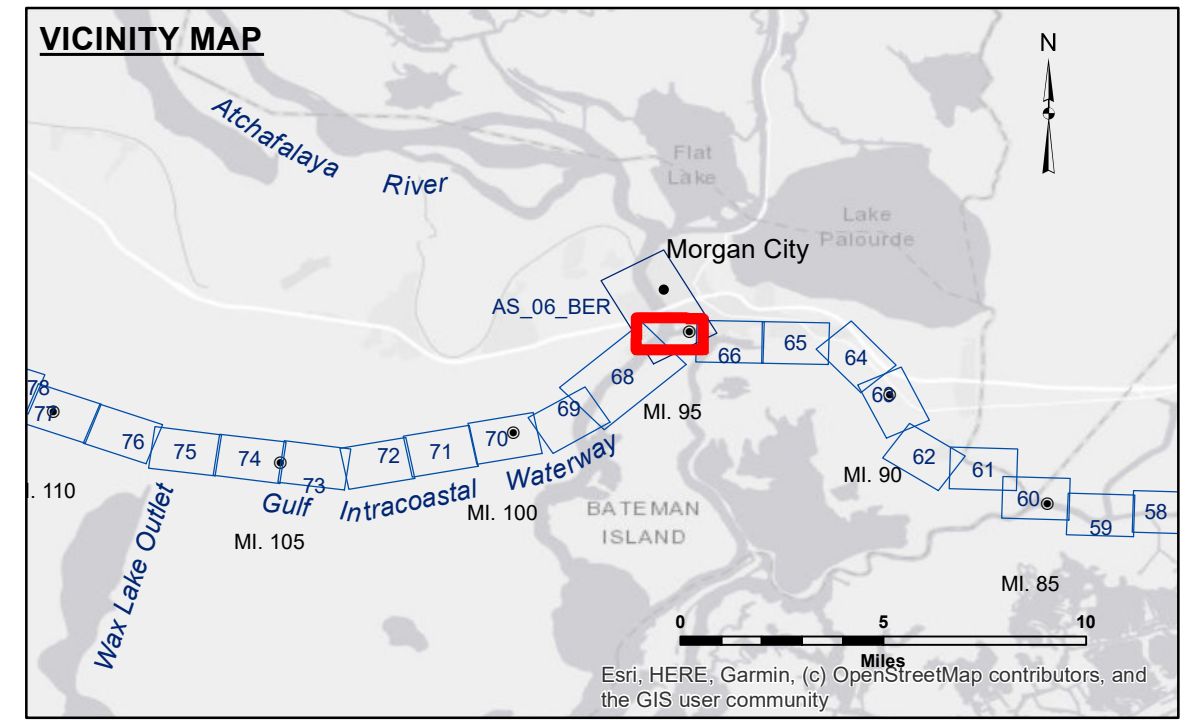


Distribution Liability: The data represents the results of data collection/processing for a specific US Army Corps of Engineers project. It is only valid for its intended use, control, time and accuracy specifications. The user is responsible for the results of their use. The application of the data for other than its intended purpose is at the user's risk.

Data Constraints: Hydrographic survey data is subject to change rapidly due to several factors including but not limited to encroaching vegetation, shifting sandbars, and changes in channel conditions. The US Army Corps of Engineers accepts no responsibility for changes in the hydrographic conditions when developed after the date of the survey. Product maintainers should not rely solely upon this information.

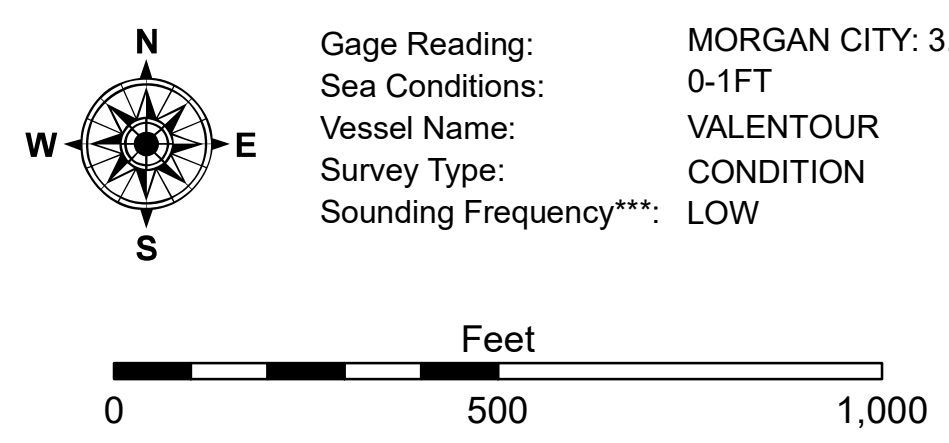
Submitted:	Surveyed By: ADAMS/CHAMPINE
Recommended:	Placed By: BD
Approved:	Checked By: AD/JH

U.S. ARMY CORPS OF ENGINEERS
NEW ORLEANS DISTRICT



LEGEND

--- Federal Navigation Channel	○ Cable Area	□ Borrow Area	■ -12' and above
— Federal Navigation Center Line	□ Placement Area	● Shoalest Sounding**	□ -12' and below
— As-built Pipeline/Cable	□ Anchorage Area	★ Beacon, General	
..... Unconfirmed Pipeline/Cable	⊗ Obstruction Point	◆ Red Navigation Buoy	
— Project Depth Contour	⚓ Wrecks-Submerged	◆ Green Navigation Buoy	



NOTES:
Horizontal Coordinate System:
North American Datum of 1983 (NAD83), projected to the State Plane Coordinate System (SPCS), Louisiana South Zone. Distance units in U.S. Survey Feet.

Vertical Datum:
Soundings are shown in feet and indicate depths below Mean Low Gulf Datum (MLG). Datum Relationships for Lower Atchafalaya River at Morgan City (03780) as of 2017: 0.0' NAVD88 (2009.55) = 1.89' MLG

The location of navigation aids are based on and provided by the U.S. Coast Guard.

2015 Aerial Photography data source: NAIP, 1998 DOQQ imagery shown in green from USGS.

Reference is N.O.A.A. Navigation Chart No. 11355.

** Shoalest Sounding per Quarter per Reach.

*** High frequency (200 kHz) survey data represents the first signal return at a sounding location and will include suspended solids, known as "fluff", if present. Low frequency (20 kHz) survey data normally penetrates through this "fluff" layer to depict elevations of consolidated bottom material. Low frequency accuracies may vary depending on channel conditions and fathometer settings.

GULF INTRACOASTAL WATERWAY
20 GRAND POINT
GL_67_BBW_20230531_CS
31 May 2023

Sheet Reference Number
67 of 191