

US Army Corps of Engineers District: CEMVN

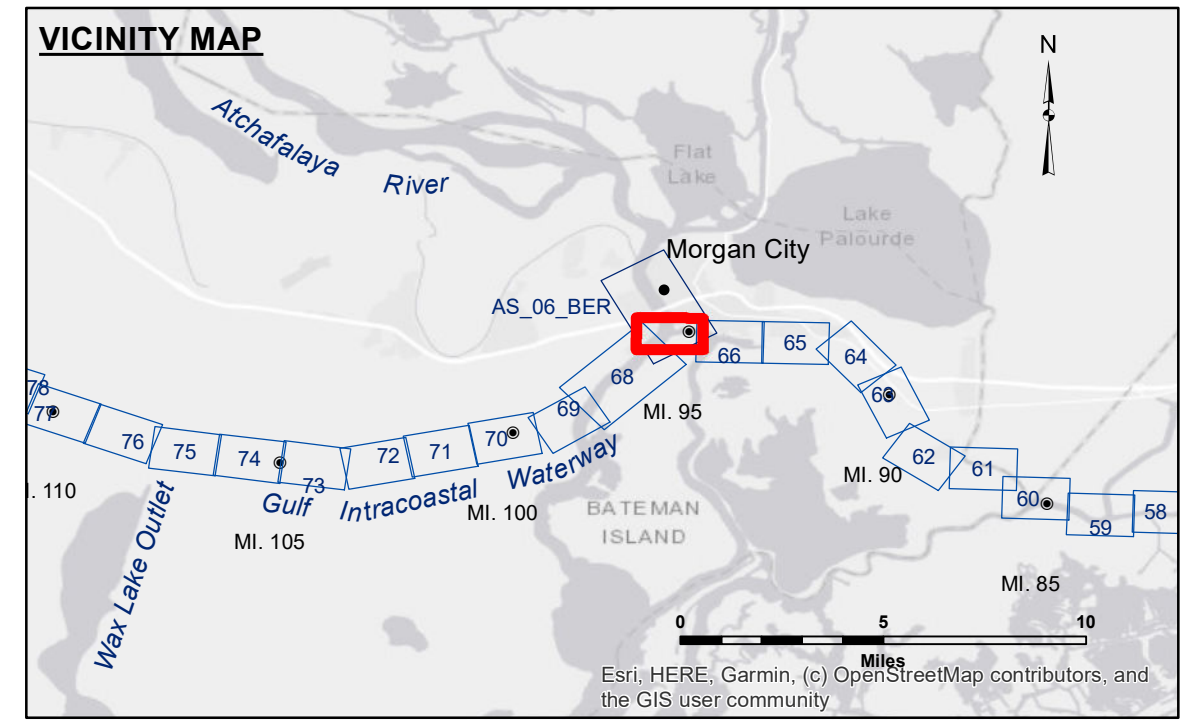
Accession: The United States Government makes these data and the recipient accepts and uses them with the express understanding that the data are not to be used for any purpose other than that for which they were originally collected, and that the user is responsible for the results of any use of the data for other than its intended purpose.

Disclaimer: The information depicted on this map represents the results of a survey conducted by the United States Army Corps of Engineers. The information is provided for informational purposes only and is not intended to be used for any purpose other than that for which it was originally collected. The user is responsible for the results of any use of the data for other than its intended purpose.

Liability: The data represents the results of a survey conducted by the United States Army Corps of Engineers. The information is provided for informational purposes only and is not intended to be used for any purpose other than that for which it was originally collected. The user is responsible for the results of any use of the data for other than its intended purpose.

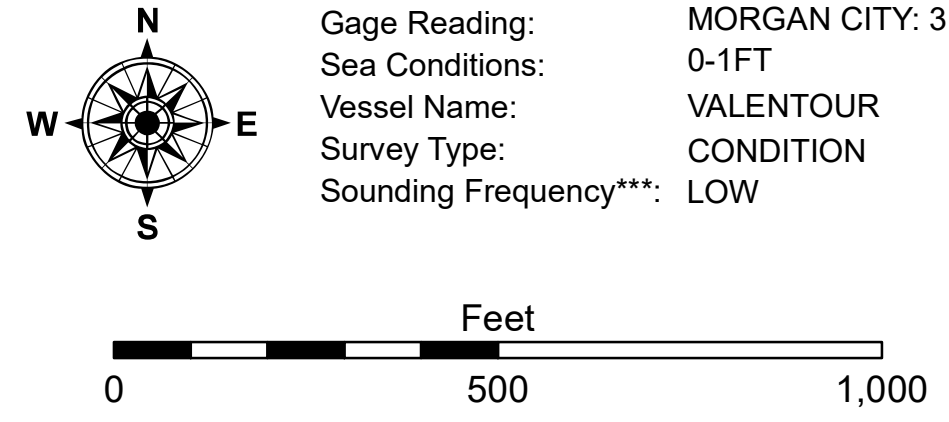
Submitted:	Surveyed By: ADAMS/CHAMPINE
Recommended:	Plotted By: JH
Approved:	Checked By: JH

U.S. ARMY CORPS OF ENGINEERS
NEW ORLEANS DISTRICT



LEGEND

--- Federal Navigation Channel	○ Cable Area	□ Borrow Area	■ -12' and above
— Federal Navigation Center Line	□ Placement Area	● Shoalest Sounding**	□ -12' and below
— As-built Pipeline/Cable	□ Anchorage Area	★ Beacon, General	
..... Unconfirmed Pipeline/Cable	⊗ Obstruction Point	◆ Red Navigation Buoy	
— Project Depth Contour	⚓ Wrecks-Submerged	◆ Green Navigation Buoy	



NOTES:

Horizontal Coordinate System:
North American Datum of 1983 (NAD83), projected to the State Plane Coordinate System (SPCS), Louisiana South Zone. Distance units in U.S. Survey Feet.

Vertical Datum:
Soundings are shown in feet and indicate depths below Mean Low Gulf Datum (MLG). Datum Relationships for Lower Atchafalaya River at Morgan City (03780) as of 2017: 0.0' NAVD88 (2009.55) = 1.89' MLG

The location of navigation aids are based on and provided by the U.S. Coast Guard.

2015 Aerial Photography data source: NAIP, 1998 DOQQ imagery shown in green on USGS.

Reference is N.O.A.A. Navigation Chart No. 11355.

** Shoalest Sounding per Quarter per Reach.

*** High frequency (200 kHz) survey data represents the first signal return at a sounding location and will include suspended solids, known as "fluff", if present. Low frequency (20 kHz) survey data normally penetrates through this "fluff" layer to depict elevations of consolidated bottom material. Low frequency accuracies may vary depending on channel conditions and fathometer settings.

GULF INTRACOASTAL WATERWAY
20 GRAND POINT
GI_67_BBW_20230926_CS
26 September 2023

Sheet Reference Number
67 of 191

Revision Number:
4.2-20230420