

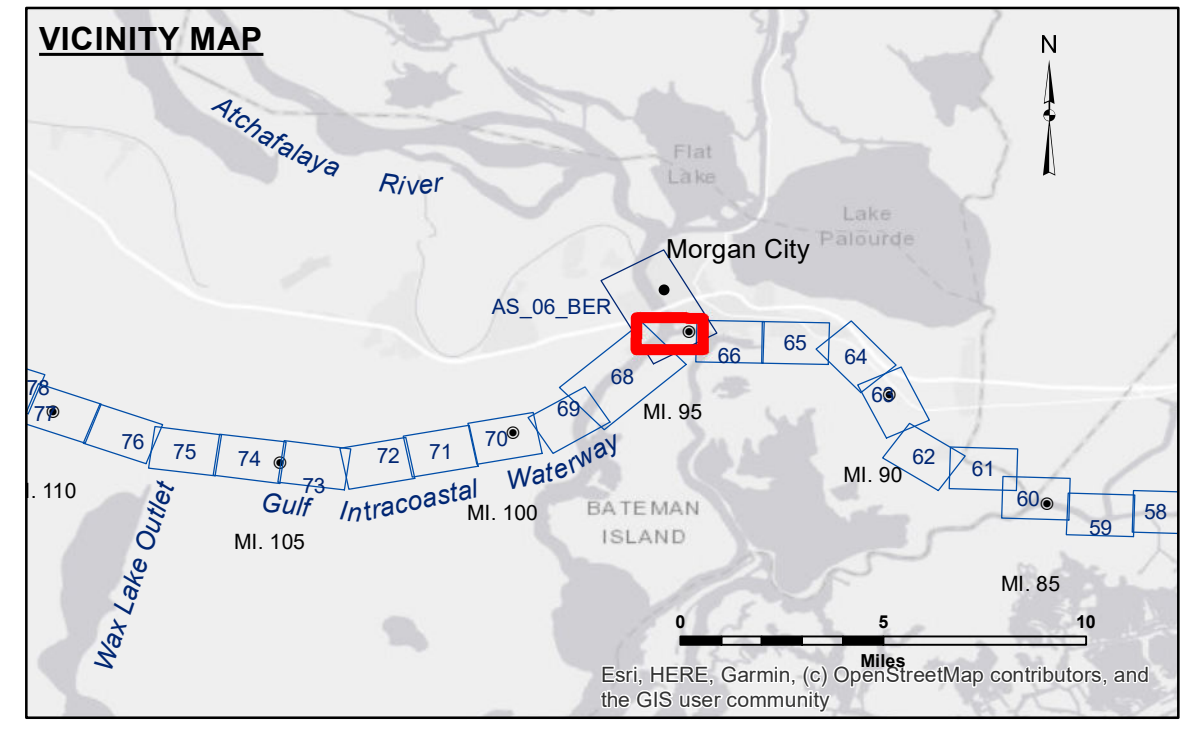
Distribution Liability: The data represents the results of data collection/processing for a specific US Army Corps of Engineers project. It is only valid for its intended use, content, time and accuracy specifications. The user is responsible for the results of their use. The user must apply the appropriate level of care to the data for their intended purpose.

Data Constraints: Hydrographic survey data is subject to change rapidly due to several factors including but not limited to changing bathymetry, sedimentation, and channel migration. The user must verify the data for their intended use. The user must also verify the data for their intended use.

Disclaimer: The information depicted on this map represents the results of a survey conducted by the US Army Corps of Engineers. The information is provided for informational purposes only and is not intended to be used for any other purpose. The user must verify the data for their intended use.

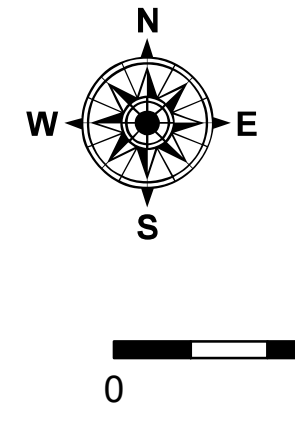
Submitted:	Surveyed By: ADAMS/CHAMPINE
Recommended:	Plotted By: JH
Approved:	Checked By: JH

U.S. ARMY CORPS OF ENGINEERS
NEW ORLEANS DISTRICT
Chief, Survey Section
Chief, Waterways Maintenance Section

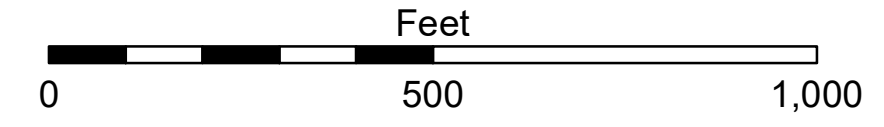


LEGEND

--- Federal Navigation Channel	○ Cable Area	□ Borrow Area	■ -12' and above
— Federal Navigation Center Line	□ Placement Area	● Shoalest Sounding**	□ -12' and below
— As-built Pipeline/Cable	□ Anchorage Area	★ Beacon, General	
..... Unconfirmed Pipeline/Cable	⊗ Obstruction Point	◆ Red Navigation Buoy	
— Project Depth Contour	⚓ Wrecks-Submerged	◆ Green Navigation Buoy	



Gage Reading: MORGAN CITY: 3.26 MLG AVG
Sea Conditions: 0-1FT
Vessel Name: VALENTOUR
Survey Type: CONDITION
Sounding Frequency***: HIGH



NOTES:
Horizontal Coordinate System: North American Datum of 1983 (NAD83), projected to the State Plane Coordinate System (SPCS), Louisiana South Zone. Distance units in U.S. Survey Feet.
Vertical Datum: Soundings are shown in feet and indicate depths below Mean Low Gulf Datum (MLG). Datum Relationships for Lower Atchafalaya River at Morgan City (03780) as of 2017: 0.0' NAVD88 (2009.55) = 1.89' MLG.
The location of navigation aids are based on and provided by the U.S. Coast Guard.
2015 Aerial Photography data source: NAIP, 1998 DOQQ imagery shown in green on USGS.
Reference is N.O.A.A. Navigation Chart No. 11355.
** Shoalest Sounding per Quarter per Reach.
*** High frequency (200 kHz) survey data represents the first signal return at a sounding location and will include suspended solids, known as "fluff", if present. Low frequency (20 kHz) survey data normally penetrates through this "fluff" layer to depict elevations of consolidated bottom material. Low frequency accuracies may vary depending on channel conditions and fathometer settings.

GULF INTRACOASTAL WATERWAY
20 GRAND POINT
GL_67_BBW_20241025_CS
25 October 2024

Sheet Reference Number
67 of 191
Revision Number:
4.2-20240420