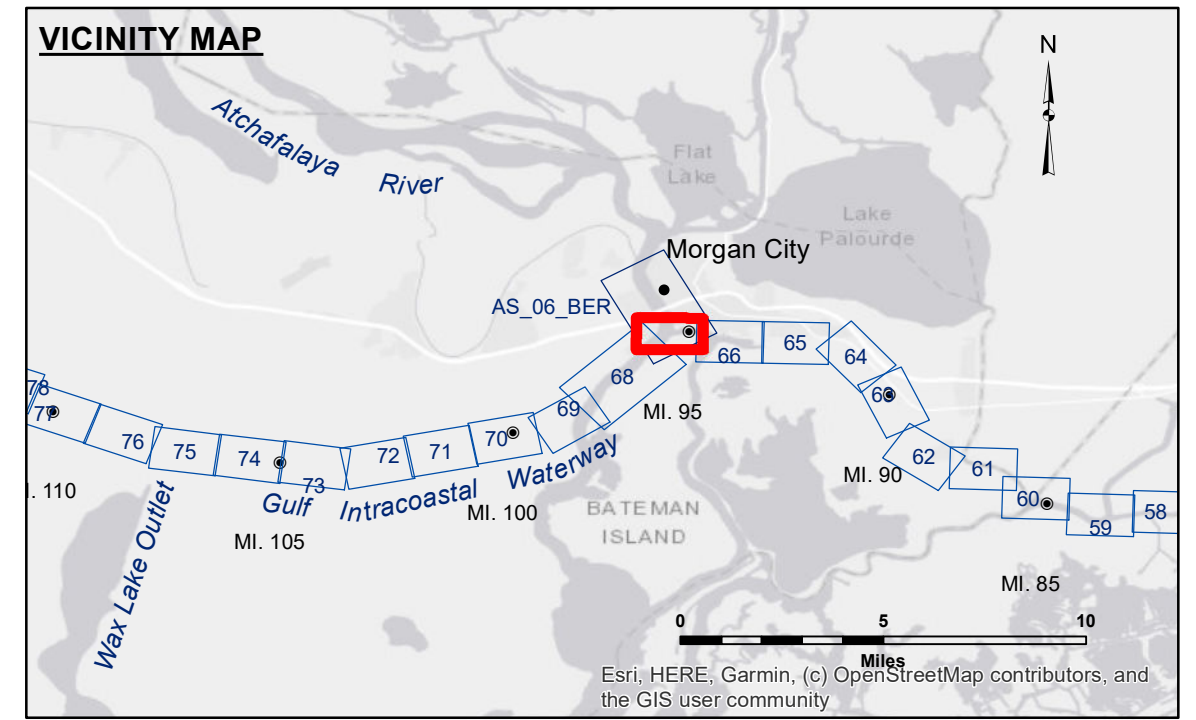


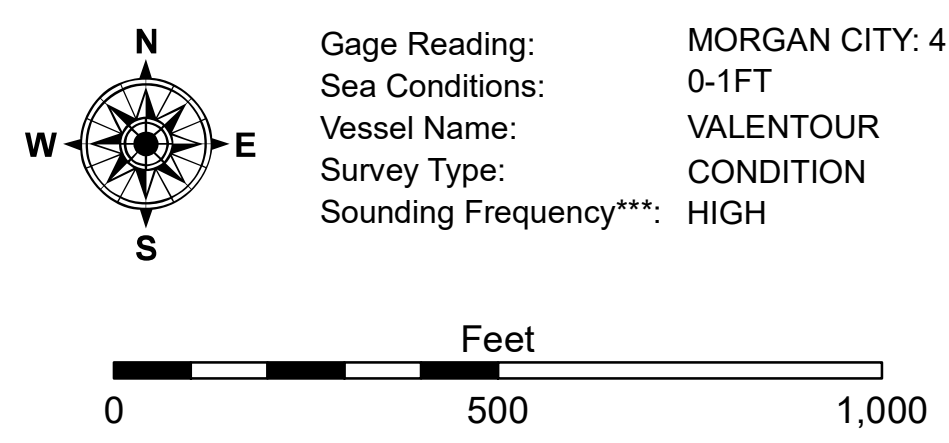
Distribution Liability: The data represents the results of data collection/processing for a specific US Army Corps of Engineers project. It is only valid for its intended use, content, time and accuracy specifications. The user is responsible for the results of their use. The user's application of the data for other than its intended purpose is at their own risk.

Data Constraints: Hydrographic survey data is subject to change rapidly due to several factors including, but not limited to, changing hydrological conditions which develop after the date of the survey. The US Army Corps of Engineers accepts no responsibility for changes in the hydrological conditions which develop after the date of the survey. The information depicted on this map represents the results of a survey conducted at the time the map was prepared. It is not intended to represent the general condition existing at that time.

U.S. ARMY CORPS OF ENGINEERS NEW ORLEANS DISTRICT		
Submitted:	Surveyed By: ADAMS/CHAMPINE	Plotted By: JHI
Recommended:	Chief, Survey Section	Checked By: JHI
Approved:	Chief, Waterways Maintenance Section	



LEGEND	
--- Federal Navigation Channel	○ Cable Area
— Federal Navigation Center Line	□ Placement Area
— As-built Pipeline/Cable	□ Anchorage Area
..... Unconfirmed Pipeline/Cable	⊗ Obstruction Point
— Project Depth Contour	✈ Wrecks-Submerged
□ Borrow Area	★ Beacon, General
● Shoalest Sounding**	◆ Red Navigation Buoy
☆ Beacon, General	◆ Green Navigation Buoy



NOTES:
 Horizontal Coordinate System:
 North American Datum of 1983 (NAD83), projected to the State Plane Coordinate System (SPCS), Louisiana South Zone. Distance units in U.S. Survey Feet.
 Vertical Datum:
 Soundings are shown in feet and indicate depths below Mean Low Gulf Datum (MLG). Datum Relationships for Lower Atchafalaya River at Morgan City (03780) as of 2017: 0.0' NAVD88 (2009.55) = 1.89' MLG.
 The location of navigation aids are based on and provided by the U.S. Coast Guard.
 2015 Aerial Photography data source: NAIP, 1998 DOQQ imagery shown in green on USGS.
 Reference is N.O.A.A. Navigation Chart No. 11355.
 ** Shoalest Sounding per Quarter per Reach.
 *** High frequency (200 kHz) survey data represents the first signal return at a sounding location and will include suspended solids, known as "fluff", if present. Low frequency (20 kHz) survey data normally penetrates through this "fluff" layer to depict elevations of consolidated bottom material. Low frequency accuracies may vary depending on channel conditions and fathometer settings.

GULF INTRACOASTAL WATERWAY
 20 GRAND POINT
 GL_67_BBW_20241105_CS
 05 November 2024

Sheet Reference Number
 67 of 191